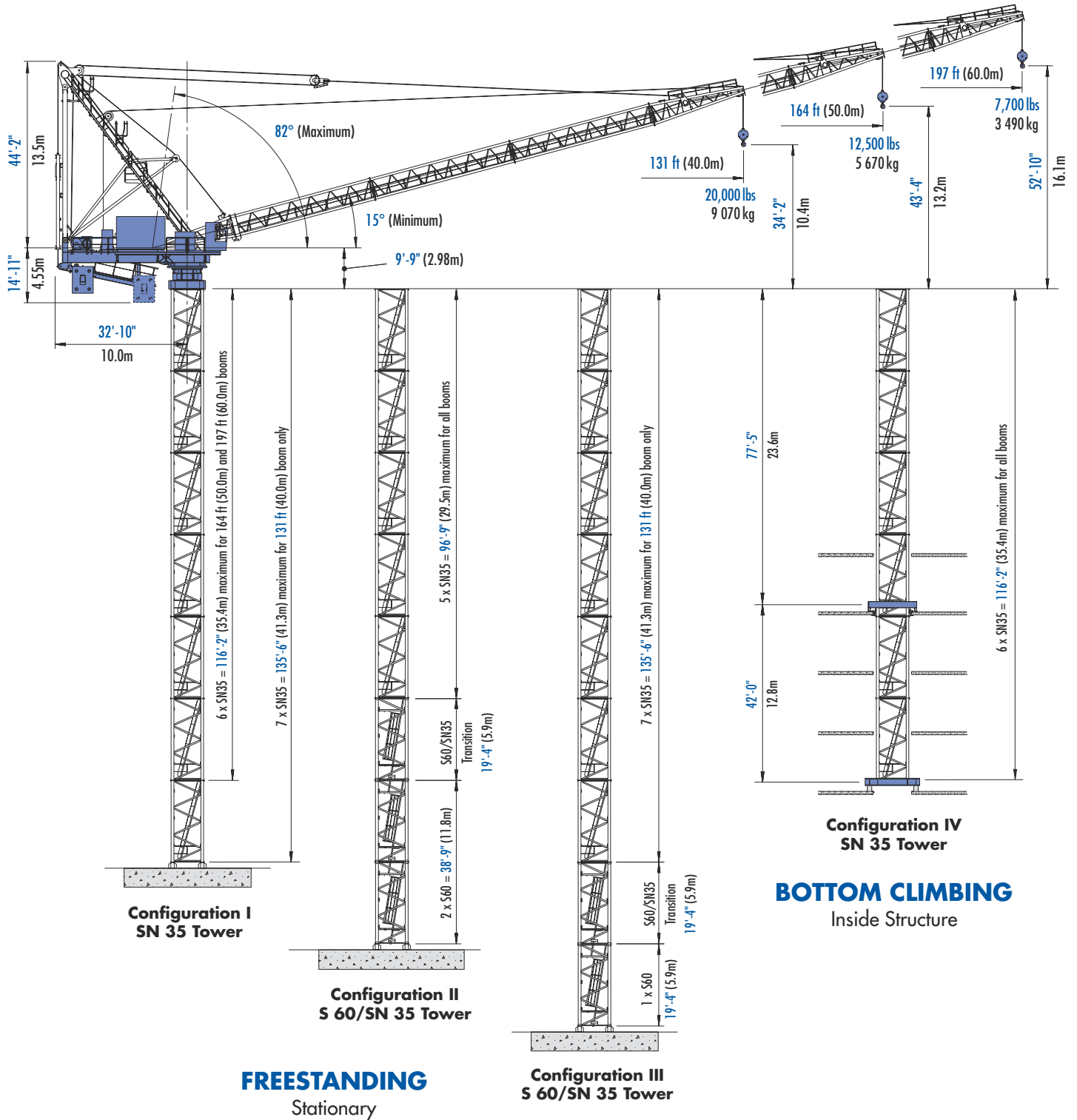


# Pecco SN 355

## LUFFING BOOM TOWER CRANE

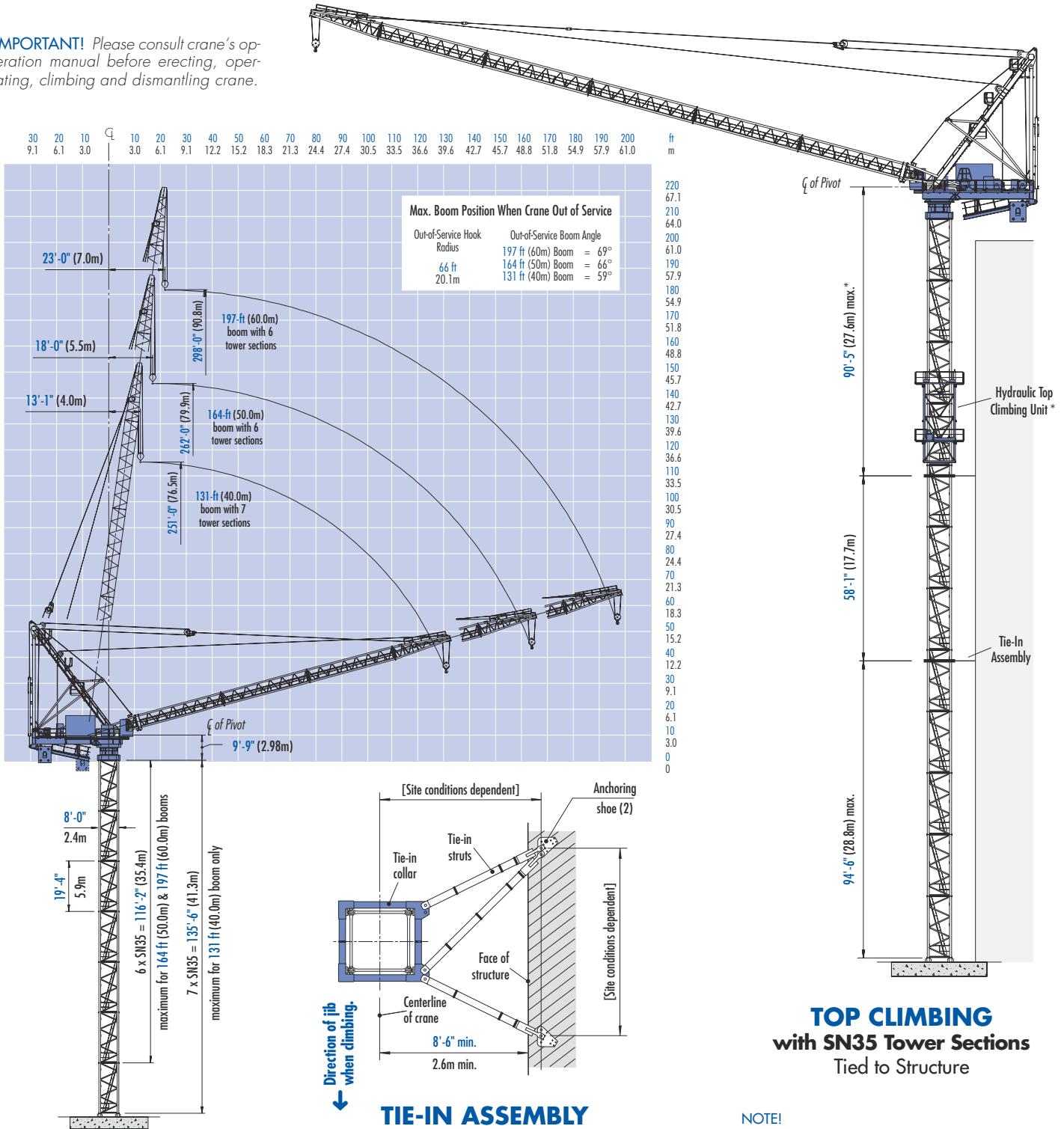


# Morrow Equipment

# Configurations

# Pecco SN 355

**IMPORTANT!** Please consult crane's operation manual before erecting, operating, climbing and dismantling crane.



**FREESTANDING**  
Stationary  
with SN35 Tower Sections

**TIE-IN ASSEMBLY**  
Plan View

**NOTE!** The tie-in assembly shown above is an example of a typical installation. Please note, however, that factors determining the installation of tie-in assemblies may vary due to project specific criteria.

**TOP CLIMBING**  
with SN35 Tower Sections  
Tied to Structure

**NOTE!**

\*Lower the top climbing unit to the uppermost tie-in prior to operating crane at maximum hook height.

Consult Morrow Equipment for specific information regarding alternate tower configurations, dimensions, tie-in locations, reaction forces and slab openings.

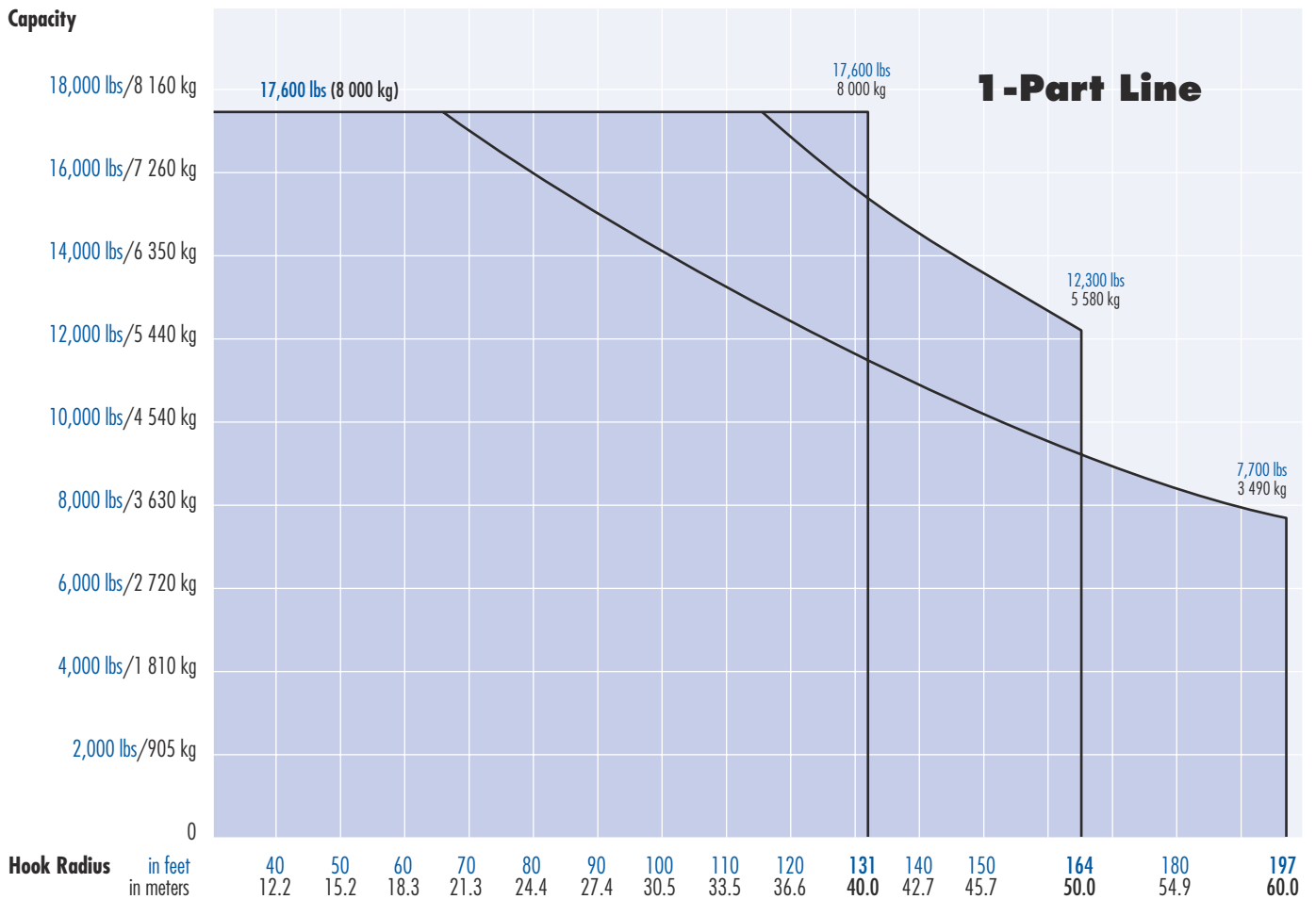
# Radius and Capacities

# Pecco SN 355

## 1-Part Line

Hook Radius	1-Part Line Max Capacity – Radius	ft m	50 15.2	60 18.3	70 21.3	80 24.4	90 27.4	100 30.5	110 33.5	120 36.6	131 40.0	140 42.7	150 45.7	160 48.8	164 50.0	170 51.8	180 54.9	190 57.9	197 60.0
197 ft 60.0m	17,600 lbs – 66 ft 8 000 kg – 20.1m	lbs kg	17,600 8 000	17,600 8 000	17,000 7 710	16,100 7 300	15,000 6 800	14,200 6 440	13,250 6 010	12,400 5 625	11,600 5 260	10,800 4 900	10,200 4 625	9,500 4 310	9,300 4 220	9,000 4 080	8,450 3 830	8,000 3 630	7,700 3 490
164 ft 50.0m	17,600 lbs – 115 ft 8 000 kg – 35.0m	lbs kg	17,600 8 000	17,600 8 000	17,600 8 000	17,600 8 000	17,600 8 000	17,600 8 000	17,600 8 000	16,800 7 620	15,400 6 985	14,500 6 580	13,500 6 125	12,640 5 735	12,300 5 580				
131 ft 40.0m	17,600 lbs – 131 ft 8 000 kg – 40.0m	lbs kg	17,600 8 000	17,600 8 000	17,600 8 000	17,600 8 000	17,600 8 000	17,600 8 000	17,600 8 000	17,600 8 000	17,600 8 000								

### Capacity



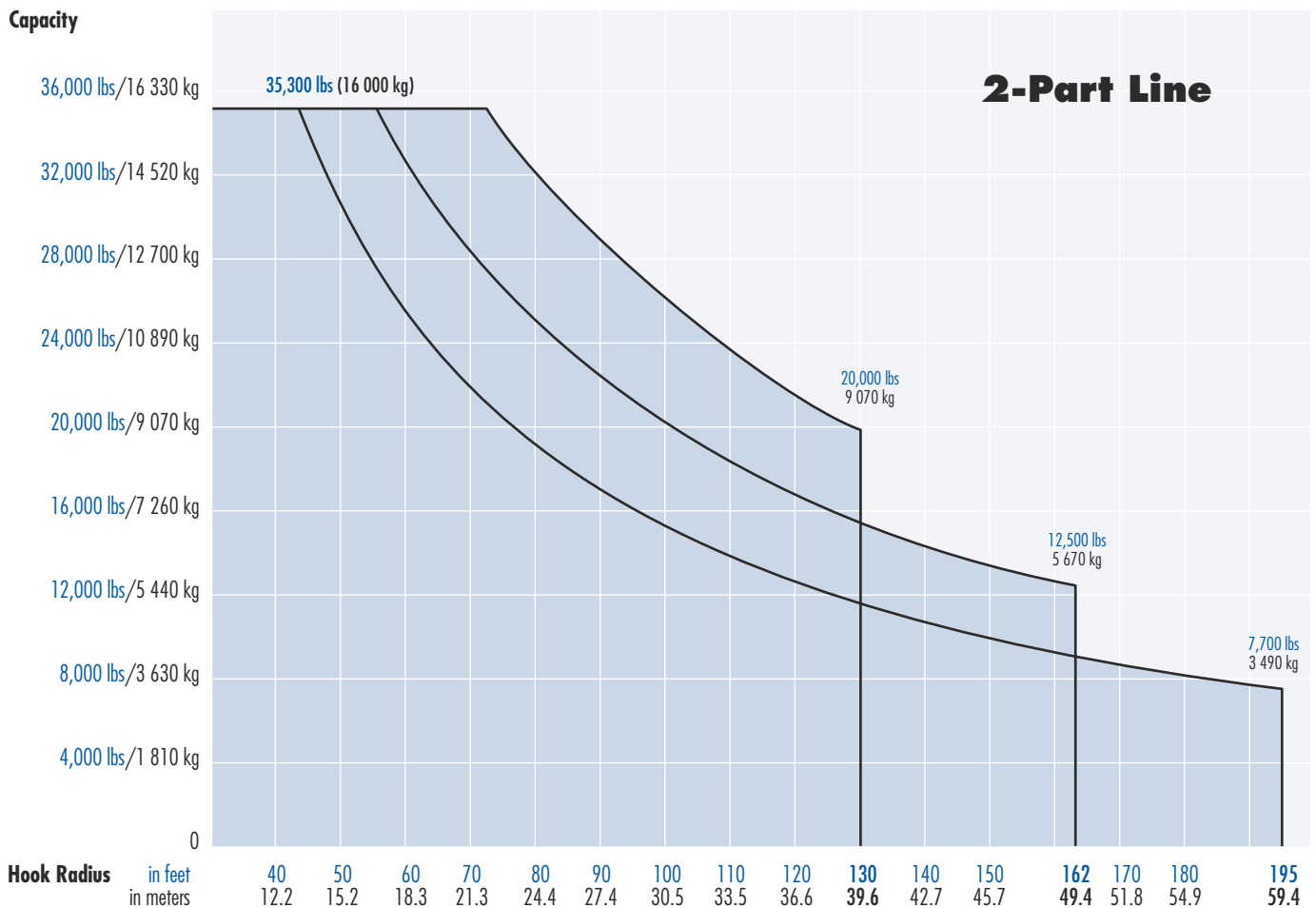
# Radius and Capacities

# Pecco SN 355

## 2-Part Line

Hook Radius	Maximum Capacity – Radius	ft m	50 15.2	60 18.3	70 21.3	80 24.4	90 27.4	100 30.5	110 33.5	120 36.6	130 39.6	140 42.7	150 45.7	160 48.8	162 49.4	170 51.8	180 54.9	190 57.9	195 59.4	
195 ft 59.4m	35,300 lbs – 44 ft 16 000 kg – 13.4m	lbs kg	30,500 13 835	26,000 11 795	21,900 9 935	19,000 8 620	16,900 7 665	15,200 6 895	14,000 6 350	12,700 5 760	11,700 5 310	11,000 4 990	10,200 4 625	9,450 4 285	9,300 4 220	8,900 4 035	8,400 3 810	8,000 3 630	7,700 3 490	
162 ft 49.4m	35,300 lbs – 56 ft 16 000 kg – 17.1m	lbs kg	35,200 16 000	33,500 15 195	29,000 13 155	25,300 11 475	22,600 10 250	20,200 9 160	18,500 8 390	17,000 7 710	15,600 7 075	14,500 6 575	13,300 6 030	12,635 5 730	12,500 5 670					
130 ft 39.6m	35,300 lbs – 72 ft 16 000 kg – 21.9m	lbs kg	35,200 16 000	35,200 16 000	35,200 16 000	32,500 14 740	29,100 13 200	26,000 11 795	23,700 10 750	21,700 9 845	20,000 9 070									

### Capacity



# SPECIFICATIONS

## Pecco Tower Crane Model SN 355

### Hoist Speed and Capacity

Hoist Unit	1-Part Line				
165 hp (122 kW) AC hoist unit 4-speed gearbox Remote-controlled gear shifting Eddy current brake	Gear	Capacity	Line Speed	Capacity	Line Speed
	1	17,600 lbs @	252 fpm	8 000 kg @	76 m/min
	2	11,025 lbs @	390 fpm	5 000 kg @	120 m/min
	3	6,600 lbs @	630 fpm	3 000 kg @	192 m/min
	4	3,850 lbs @	980 fpm	1 750 kg @	300 m/min
	2-Part Line				
	1	35,300 lbs @	126 fpm	16 000 kg @	38 m/min
	2	22,050 lbs @	195 fpm	10 000 kg @	60 m/min
3	13,200 lbs @	315 fpm	6 000 kg @	96 m/min	
4	7,700 lbs @	490 fpm	3 500 kg @	150 m/min	

1P520  
2P260

**NOTE!** Capacities and line speeds indicated will vary depending on the amount of hoist rope installed. This crane model may be equipped with a hoist unit other than that specified in the data above. To verify, check the serial number of the crane and refer to the Pecco SN 355 Operation Manual for additional information.

### Motor Information

Drive Unit	Horsepower	Kilowatts	Speed
Luffing	165 hp	122 kW	15° to 82° in 82 sec *
Swing	2 x 12 hp	2 x 9 kW	1.0 rpm

\* **NOTE!** Luffing speed figure shown is for crane without load. Speed varies according to load on hook.

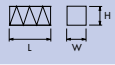







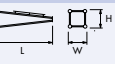
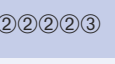

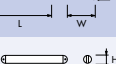
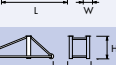

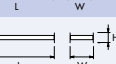




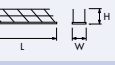

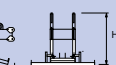

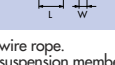
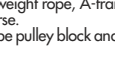
### Power Requirements

480 Volts — 3-phase — 60-cycle — 400 Amperes service with 165 hp (122 kW) hoist unit

Specifications subject to change without notice. For other configurations and specifications, contact Morrow Equipment.

# Component List

# Pecco SN 355

Description	Dimensions L x W x H	Weight	Description	Dimensions L x W x H	Weight
Turntable (Complete) Upper & Lower Part	 11'-6" x 8'-1" x 12'-2" 3.5m x 2.46m x 3.71m	30,100 lbs 13 655 kg	Tower Section SN35 (or S35)	 19'-5" x 7'-10" x 8'-0" 5.92m x 2.4m x 2.44m	8,900 lbs 4 040 kg
Turntable Upper Part <sup>1</sup>	 11'-6" x 8'-2" x 5'-9" 3.5m x 2.49m x 1.75m	16,015 lbs 7 265 kg	Transition Section S60 to SN35	 19'-5" x 7'-11" x 7'-11" 5.92m x 2.41m x 2.41m	9,930 lbs 4 500 kg
Turntable Lower Part <sup>2</sup>	 8'-8" x 8'-1" x 6'-5" 2.64m x 2.46m x 1.96m	14,085 lbs 6 390 kg	Tower Section S60	 19'-5" x 7'-11" x 7'-11" 5.92m x 2.41m x 2.41m	9,930 lbs 4 500 kg
Intermediate Frame	 8'-8" x 8'-1" x 1'-4" 2.64m x 2.46m x 0.41m	2,100 lbs 950 kg	Top Climbing Unit <sup>7</sup> with Hydraulics (SN35)	 29'-8" x 11'-6" x 11'-6" 9.0m x 3.5m x 3.5m	25,750 lbs 11 680 kg
Climbing Beam (each) [2 beams per set]	 10'-9" x 5.5" x 1'-7" 3.27m x 0.14m x 0.48m	1,250 lbs 565 kg	Climbing Traverse	 7'-4" x 1'-2" x 4'-10" 2.24m x 0.36m x 1.47m	1,400 lbs 635 kg
Machine Deck Only	 26'-3" x 8'-1" x 8'-1" 8.0m x 2.46m x 2.46m	17,500 lbs 7 940 kg	Bridge	 4'-11" x 2'-4" x 7'-3" 1.5m x 0.71m x 2.21m	290 lbs 130 kg
Runway for Counterweight Carriage	 21'-4" x 7'-2" x 2'-6" 6.5m x 2.18m x 0.76m	7,500 lbs 3 400 kg	Boom Section ① (Butt)	 20'-7" x 6'-5" x 6'-9" 6.27m x 2.0m x 2.06m	7,770 lbs 3 525 kg
Counterweight Carriage	 15'-5" x 5'-7" x 4'-3" 4.7m x 1.7m x 1.3m	6,060 lbs 2 750 kg	Boom Section ② (Intermediate)	 34'-2" x 5'-8" x 5'-8" 10.4m x 1.72m x 1.72m	4,400 lbs 2 000 kg
Cab & Electrical Panel on Mounting Frame	 26'-11" x 8'-0" x 9'-2" 8.2m x 2.44m x 2.79m	10,250 lbs 4 650 kg	Boom Section ③ (Tip)	 22'-10" x 5'-8" x 6'-1" 7.0m x 1.72m x 1.85m	5,100 lbs 2 315 kg
Hoist Unit <sup>4</sup> 165 hp (122 kW)	 10'-8" x 8'-2" x 4'-7" 3.25m x 2.49m x 1.4m	12,500 lbs 5 670 kg	Boom Assembly <sup>8</sup> 197-ft (60.0m) ①②②②②③	 211'-6" x 6'-5" x 6'-9" 64.5m x 2.0m x 2.06m	39,740 lbs 18 025 kg
Luffing Winch <sup>4</sup> 165 hp (122 kW)	 9'-6" x 6'-3" x 3'-9" 2.9m x 1.91m x 1.14m	8,400 lbs 3 810 kg	Boom Assembly <sup>8</sup> 164-ft (50.0m) ①②②②②③	 177'-4" x 6'-5" x 6'-9" 35.8m x 2.0m x 2.06m	34,620 lbs 15 705 kg
A-Frame Top	 28'-11" x 7'-11" x 7'-3" 8.8m x 2.41m x 2.21m	12,350 lbs 5 600 kg	Boom Assembly <sup>8</sup> 131-ft (40.0m) ①②②②③	 143'-3" x 6'-5" x 6'-9" 43.7m x 2.0m x 2.06m	29,500 lbs 13 380 kg
A-Frame Suspension (each) [2 members per set]	 37'-7" x 1'-1" x 1'-6" 11.46m x 0.33m x 0.46m	2,040 lbs 925 kg	Sheave Block for Luffing Wire Rope	 5'-8" x 4'-8" x 3'-2" 1.73m x 1.42m x 0.97m	1,600 lbs 725 kg
Guide Frame for Counterweight Rope	 34'-6" x 8'-0" x 7'-11" 10.52m x 2.44m x 2.41m	7,800 lbs 3 540 kg	Hook Block	 2'-8" x 1'-7" x 4'-3" 0.81m x 0.48m x 1.3m	1,900 lbs 860 kg
A-Frame Support	 18'-10" x 7'-11" x 3'-5" 5.74m x 2.41m x 1.04m	6,700 lbs 3 040 kg	Counterweight (each) [4 required]	 4'-11" x 1'-2" x 6'-3" 1.5m x 0.36m x 1.9m	16,000 lbs 7 260 kg
A-Frame <sup>5</sup> Sub-assembly A	 43'-0" x 8'-1" x 16'-5" 13.1m x 2.46m x 5.0m	17,730 lbs 8 040 kg	Ladder to A-Frame Top	 25'-7" x 3'-0" x 3'-11" 7.8m x 0.9m x 1.19m	1,300 lbs 590 kg
A-Frame <sup>6</sup> Sub-assembly B	 30'-6" x 8'-1" x 19'-0" 9.3m x 2.46m x 5.78m	15,600 lbs 7 075 kg	Ladder to Intermediate Platform	 28'-0" x 3'-0" x 3'-11" 8.53m x 0.9m x 1.19m	1,200 lbs 545 kg
Machine Deck <sup>3</sup> Assembly	 26'-3" x 15'-5" x 13'-0" 8.0m x 4.7m x 3.97m	30,300 lbs 13 745 kg	Trolley for Vertical Counterweight	 7'-10" x 1'-4" x 5'-5" 2.39m x 0.41m x 1.65m	1,000 lbs 455 kg
			Guide Track for Vertical Counterweight	 22'-9" x 7'-11" x 1'-8" 6.93m x 2.41m x 0.51m	1,830 lbs 830 kg
			Vertical Counterweight Block	 6'-7" x 6" x 3'-8" 2.0m x 0.15m x 1.1m	5,600 lbs 2 540 kg

**NOTE:** Weights and dimensions are approximate. Scale components before lifting.

<sup>1</sup> Upper Part includes swing motors. Does not include slewing ring, slewing ring support, intermediate frame and climbing beams.

<sup>2</sup> Lower Part includes slewing ring, slewing ring support, intermediate frame and climbing beams. Does not include Upper Part and swing motors.

<sup>3</sup> Includes counterweight runway, counterweight carriage and platform.

<sup>4</sup> Includes frame. Does not include wire rope.

<sup>5</sup> Includes A-frame head, A-frame suspension members (2 ea.), ladder and platforms.

<sup>6</sup> Includes guide frame for counterweight rope, A-frame support section and ladder.

<sup>7</sup> Includes weight of climbing traverse.

<sup>8</sup> Includes boom sections, luffing rope pulley block and boom suspension ropes. Does not include hoist wire rope and hook block.



## Morrow Equipment

COMPANY, L. L. C.

3218 Pringle Road SE • P O Box 3306 • Salem, Oregon 97302-0306 USA  
Tel. 503.585.5721 • Fax. 503.363.1172 • www.morrowequipment.com

The American home of  
**LIEBHERR**

Atlanta, GA • Charlotte, NC • Chicago, IL • Denver, CO • Honolulu, HI • Houston, TX • Los Angeles, CA • Las Vegas, NV  
Millwood, NY • St. Louis, MO • San Francisco, CA • Seattle, WA • Miami, FL • Tampa, FL • Washington, DC  
Sydney, Australia • Wellington, New Zealand • Vancouver, BC, Canada • Toronto, ON, Canada • México DF, México