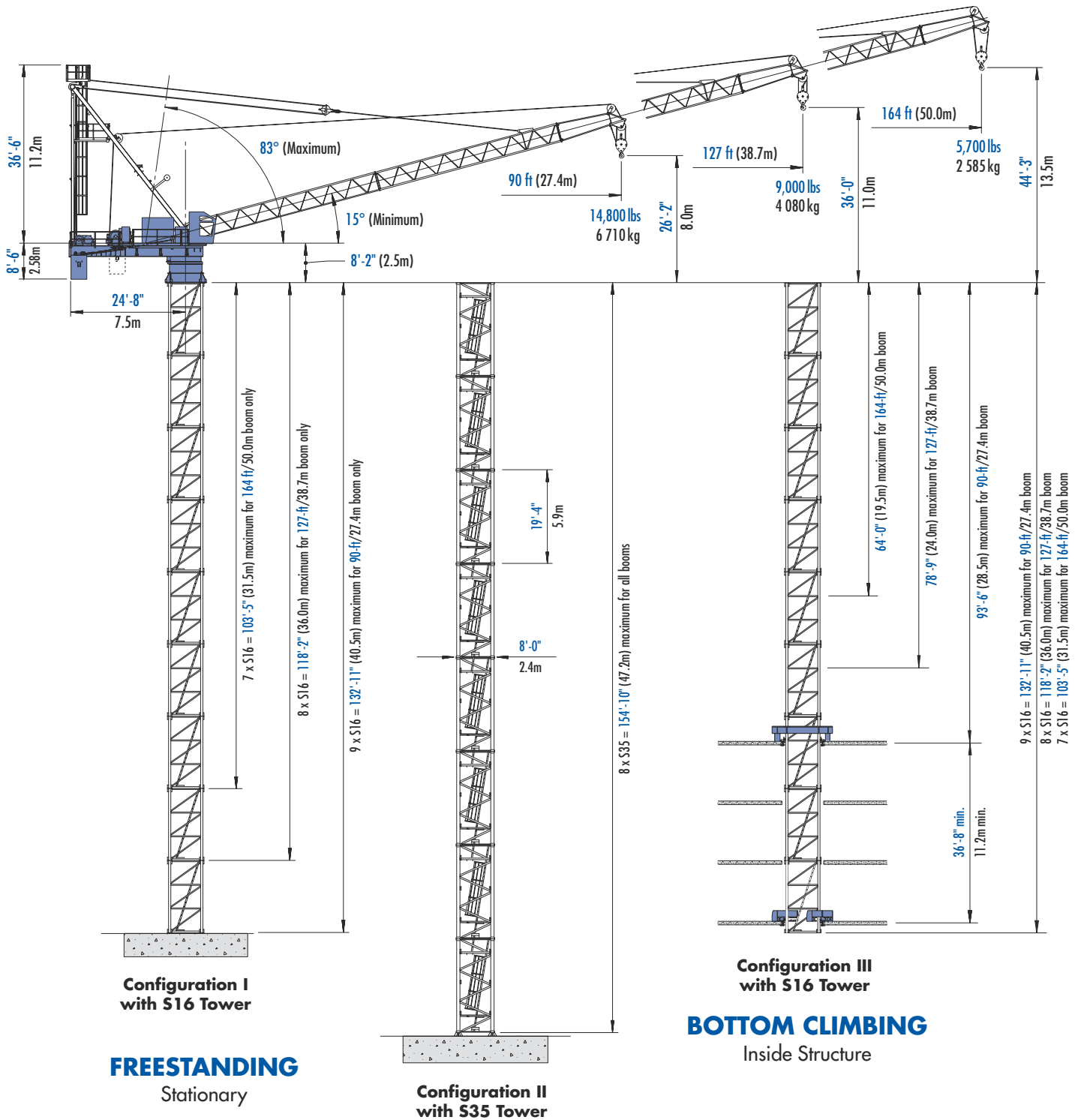


# Pecco SN 160-16

## LUFFING BOOM TOWER CRANE



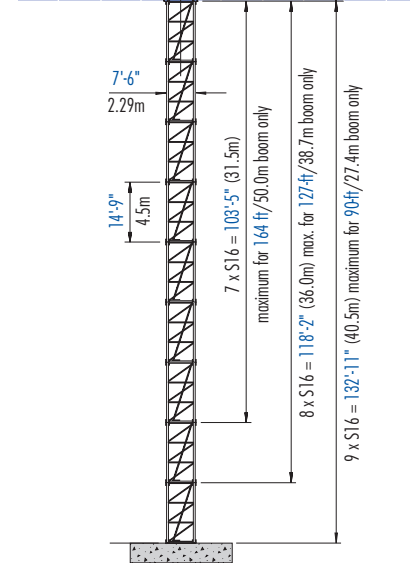
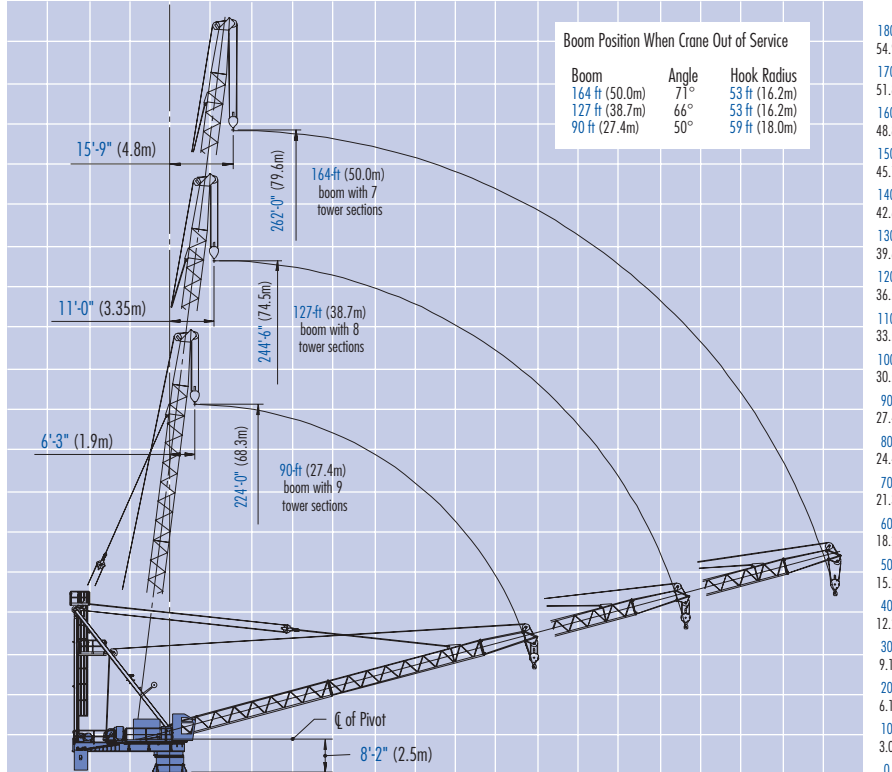
# Morrow Equipment

# Configurations

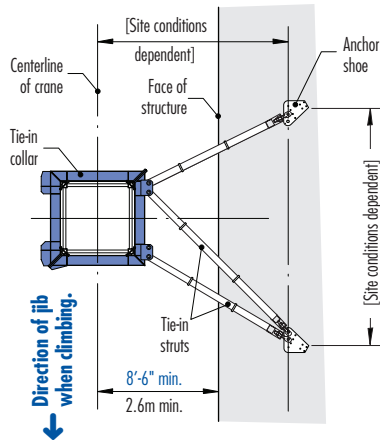
# Pecco SN 160-16

**IMPORTANT!** Please consult crane's operation manual before erecting, operating, climbing and dismantling crane.

40 30 20 10 10 20 30 40 50 60 70 80 90 100 110 120 130 140 150 160 170 ft  
12.2 9.1 6.1 3.0 3.0 6.1 9.1 12.2 15.2 18.3 21.3 24.4 27.4 30.5 33.5 36.5 39.6 42.7 45.7 48.8 51.8 m

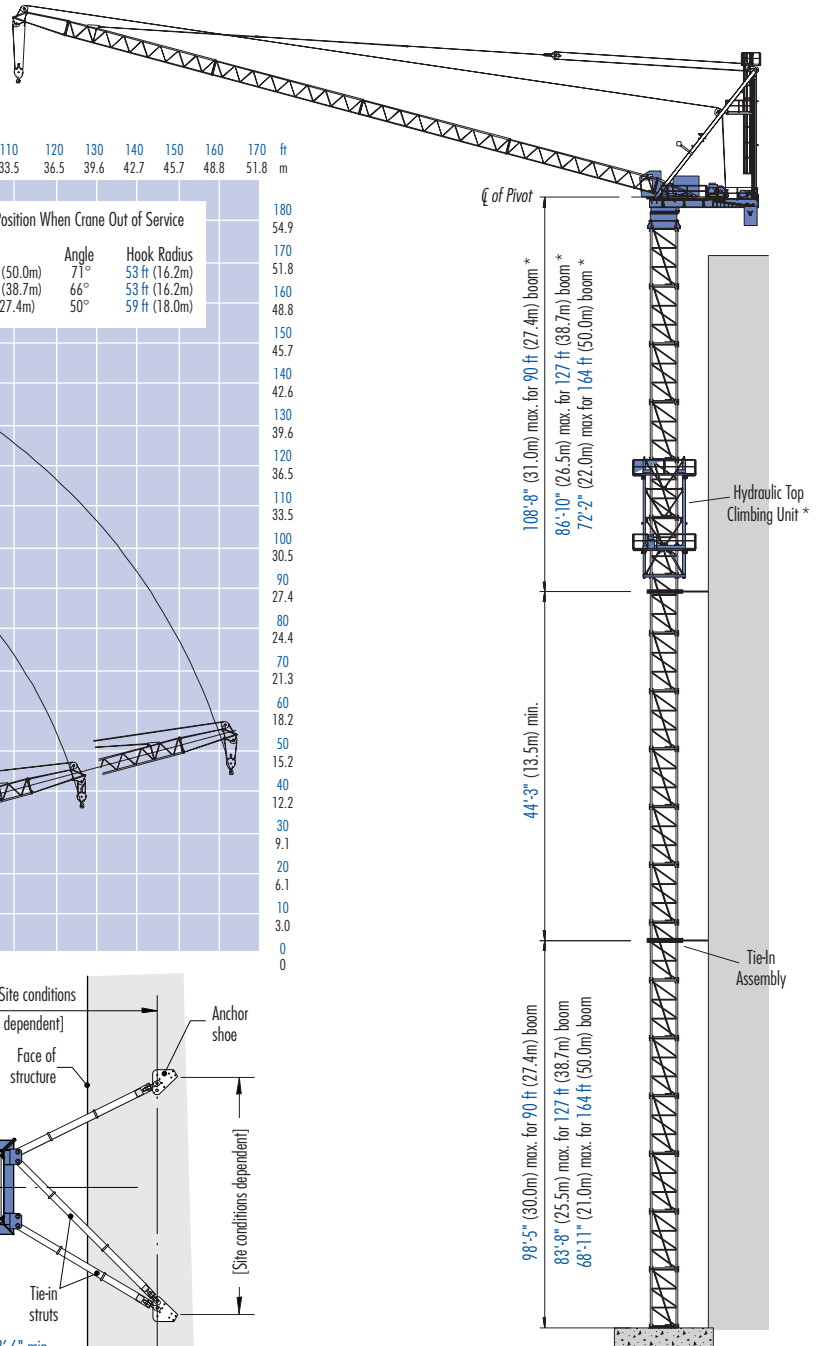


**FREESTANDING**  
with S16 Tower Sections  
Stationary



**TIE-IN ASSEMBLY**  
with S16 Tower Sections  
Plan View

**NOTE!** The tie-in assembly shown above is an example of a typical installation. Please note, however, that factors determining the installation of tie-in assemblies may vary due to project specific criteria.



**TOP CLIMBING**  
with S16 Tower Sections  
Tied to Structure

**NOTE!**

\* Lower the top climbing unit to the uppermost tie-in prior to operating crane at maximum hook height.

Consult Morrow Equipment for specific information regarding alternate tower configurations, dimensions, tie-in locations, reaction forces and slab openings.

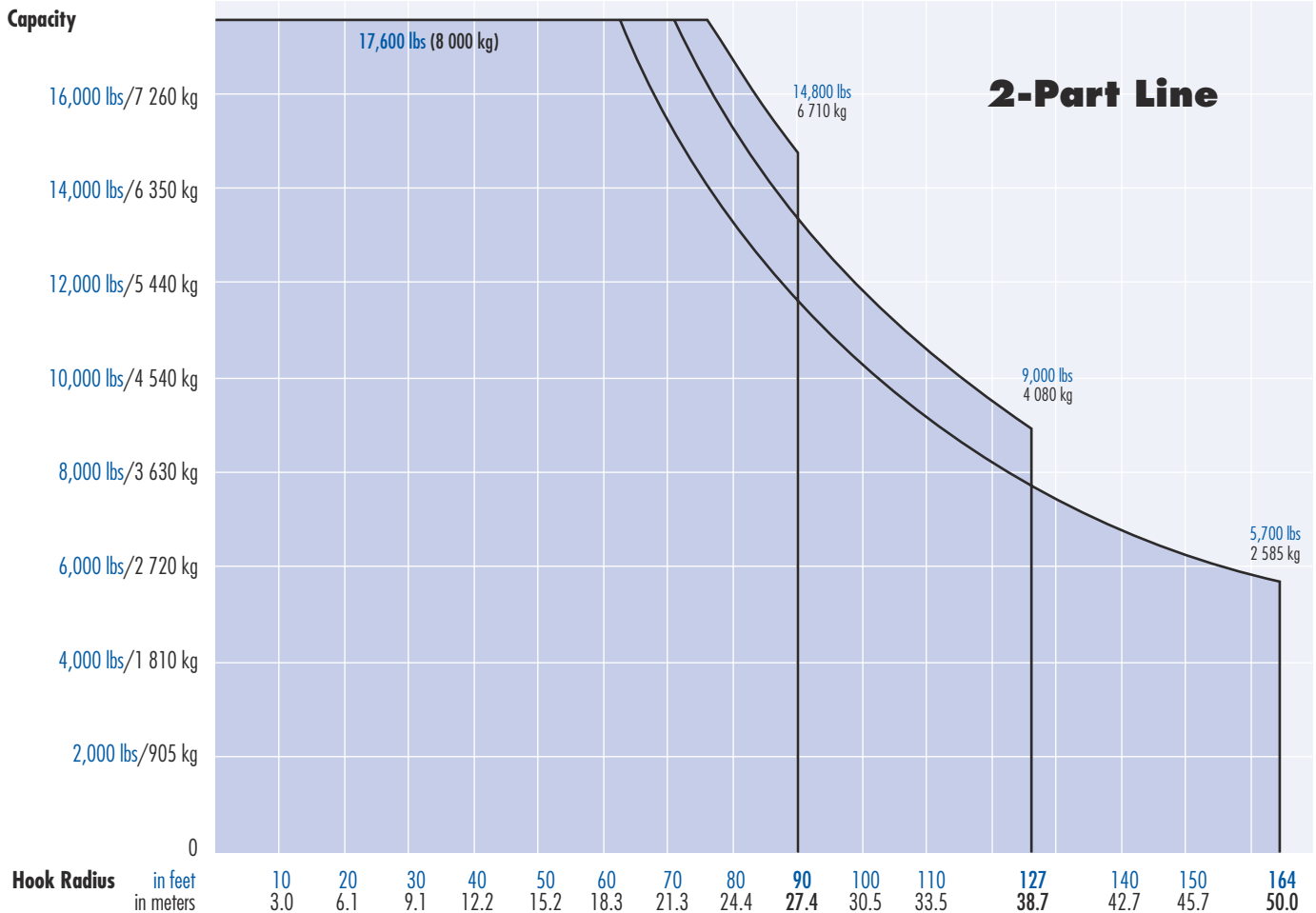
# Radius and Capacities

## Pecco Tower Crane Model SN 160-16

**IMPORTANT:** This data applies ONLY to Pecco SN 160 luffing boom cranes with serial numbers in the #0300 and #0400 series.

### 2-Part Line

Hook Radius	Maximum Capacity – Radius	ft	49	55	62	70	75	80	85	90	100	105	110	120	127	140	150	160	164
		m	14.9	16.8	18.9	21.3	22.9	24.4	25.9	27.4	30.5	32.0	33.5	36.6	38.7	42.7	45.7	48.8	50.0
164 ft 50.0m	17,600 lbs – 62 ft 8 000 kg – 18.9m	lbs	17,600	17,600	17,600	15,500	14,300	13,300	12,500	11,700	10,300	9,800	9,300	8,400	7,800	7,000	6,400	5,900	5,700
		kg	8 000	8 000	8 000	7 030	6 485	6 030	5 670	5 310	4 670	4 445	4 220	3 810	3 540	3 175	2 900	2 675	2 585
127 ft 38.7m	17,600 lbs – 71 ft 8 000 kg – 21.6m	lbs	17,600	17,600	17,600	17,600	16,400	15,300	14,300	13,500	11,900	11,200	10,700	9,600	9,000				
		kg	8 000	8 000	8 000	8 000	7 440	6 940	6 485	6 125	5 400	5 080	4 855	4 355	4 080				
90 ft 27.4m	17,600 lbs – 76 ft 8 000 kg – 23.2m	lbs	17,600	17,600	17,600	17,600	17,600	16,800	15,700	14,800									
		kg	8 000	8 000	8 000	8 000	8 000	7 620	7 120	6 710									



**NOTE!** Maximum lifting capacities are determined by the number of parts per line used when reeving the hoist wire rope, i.e., 17,600 lbs (8 000 kg) for 2-part line, 26,500 lbs (12 000 kg) for 3-part line, and 35,300 lbs (16 000 kg) for 4-part line. The boom with 164 ft (50.0m) hook radius has a maximum capacity of 17,600 lbs (8 000 kg) and MUST be reeved for 2-part line operation only. The boom with 127 ft (38.7m) hook radius has a maximum capacity of 26,500 lbs (12 000 kg) when reeved for 3-part line and a max. capacity of 17,600 lbs (8 000 kg) for 2-part line. The 127-ft (38.7m) boom can be reeved for 2-part or 3-part line operation only. The boom with 90 ft (27.4m) hook radius has a maximum capacity of 35,300 lbs (16 000 kg) when reeved for 4-part line, 26,500 lbs (12 000 kg) for 3-part line and 17,600 lbs (8 000 kg) for 2-part line. The 90-ft (27.4m) boom can be reeved for 2-part, 3-part or 4-part line operation. Contact Morrow Equipment for additional information.

# Radius and Capacities

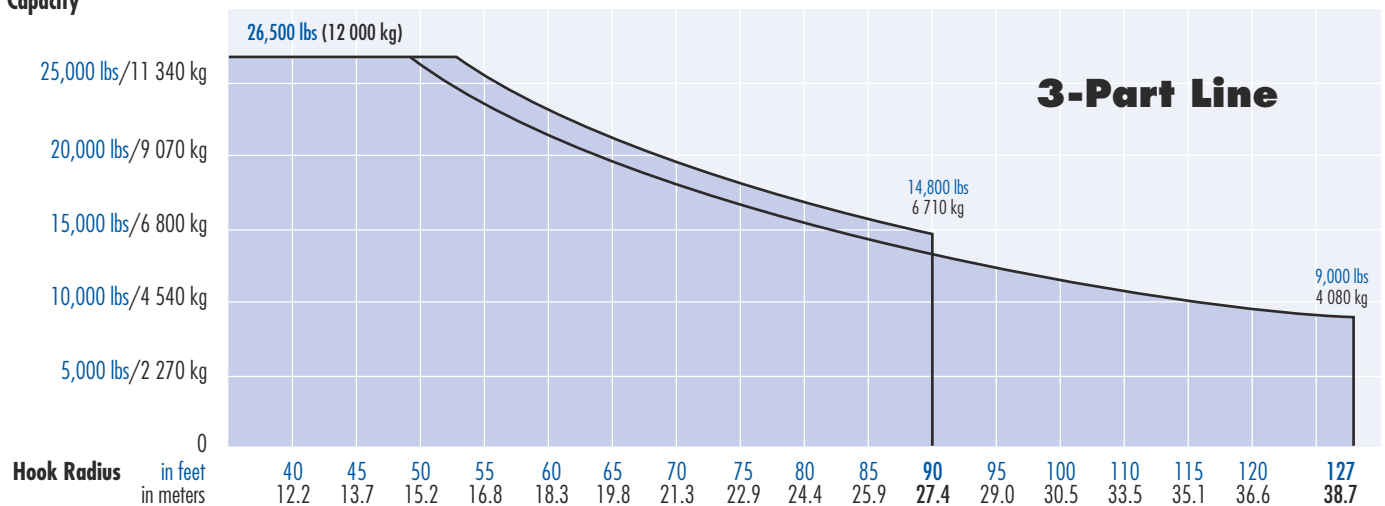
## Pecco Tower Crane Model SN 160-16

**IMPORTANT:** This data applies ONLY to Pecco SN 160 luffing boom cranes with serial numbers in the #0300 and #0400 series.

### 3-Part Line

Hook Radius	Maximum Max Capacity – Radius	ft m	30	35	40	49	55	60	65	70	75	80	85	90	100	105	110	120	127	
			9.1	10.7	12.2	14.9	16.8	18.3	19.8	21.3	22.9	24.4	25.9	27.4	30.5	32.0	33.5	36.6	38.7	
127 ft 38.7m	26,500 lbs – 49 ft 12 000 kg – 14.9m	lbs kg	26,500 12 000	26,500 12 000	26,500 12 000	26,500 12 000	23,685 10 745	21,340 9 680	19,460 8 830	17,900 8 120	16,400 7 440	15,300 6 940	14,300 6 485	13,500 6 125	11,900 5 400	11,200 5 080	10,700 4 855	9,600 4 355	9,000 4 080	
90 ft 27.4m	26,500 lbs – 53.4 ft 12 000 kg – 16.3m	lbs kg	26,500 12 000	26,500 12 000	26,500 12 000	26,500 12 000	24,470 11 100	22,780 10 335	21,125 9 580	19,500 8 845	17,900 8 120	16,800 7 620	15,700 7 120	14,800 6 710						

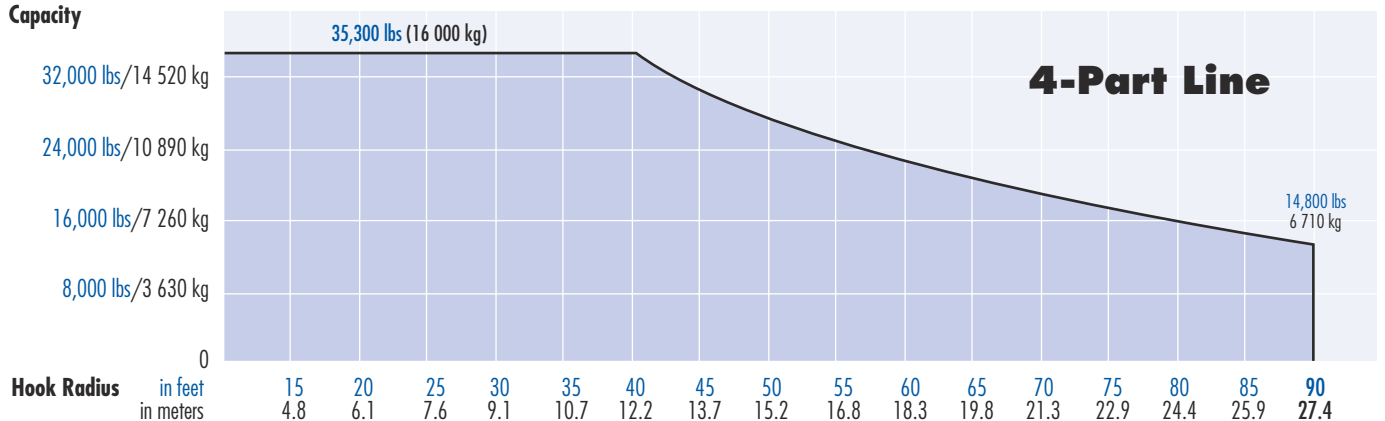
#### Capacity



### 4-Part Line

Hook Radius	Maximum Max Capacity – Radius	ft m	10	15	20	25	30	35	40	45	49	53	62	66	70	75	80	85	90
			3.1	4.8	6.1	7.6	9.1	10.7	12.2	13.7	14.9	16.2	18.9	20.1	21.3	22.9	24.4	25.9	27.4
90 ft 27.4m	35,300 lbs – 40.5 ft 16 000 kg – 12.3m	lbs kg	35,300 16 000	35,300 16 000	35,300 16 000	35,300 16 000	35,300 16 000	35,300 16 000	35,300 16 000	31,805 14 425	28,700 13 020	26,670 12 100	22,100 10 025	20,800 9 435	19,500 8 845	17,900 8 120	16,800 7 620	15,700 7 120	14,800 6 710

#### Capacity



# SPECIFICATIONS

## Pecco Tower Crane Model SN 160-16

**IMPORTANT:** This data applies ONLY to Pecco SN 160 luffing boom cranes with serial numbers in the #0300 and #0400 series.

### Hoist Speed and Capacity

Hoist Unit	2-Part Line					
<b>105 hp (78 kW) AC hoist unit</b> 4-speed gearbox Remote-controlled gear shifting Eddy current brake	Gear	Capacity		Line Speed		
	1	17,600 lbs	@	112 fpm	8 000 kg	@ 34 m/min
	2	14,000 lbs	@	176 fpm	6 350 kg	@ 54 m/min
	3	9,250 lbs	@	280 fpm	4 200 kg	@ 86 m/min
	4	5,500 lbs	@	440 fpm	2 500 kg	@ 134 m/min
	3-Part Line					
	1	26,500 lbs	@	72 fpm	12 000 kg	@ 22 m/min
	2	21,000 lbs	@	118 fpm	9 525 kg	@ 36 m/min
	3	14,000 lbs	@	184 fpm	6 350 kg	@ 56 m/min
	4	8,200 lbs	@	292 fpm	3 720 kg	@ 89 m/min
	4-Part Line					
	1	35,300 lbs	@	56 fpm	16 000 kg	@ 17 m/min
	2	28,000 lbs	@	88 fpm	12 700 kg	@ 27 m/min
	3	18,500 lbs	@	140 fpm	8 400 kg	@ 43 m/min
	4	11,000 lbs	@	220 fpm	5 000 kg	@ 67 m/min

2P180  
3P120  
4P090

**NOTE!** Capacities and line speeds indicated will vary depending on the amount of hoist rope installed. This crane model may be equipped with a hoist unit other than that specified in the data above. To verify, check the serial number of the crane and refer to the Pecco SN 160-16 Operation Manual for additional information.

### Motor Information

Drive Unit	Horsepower	Kilowatts	Speed
Luffing <sup>1</sup>	105 hp	78 kW	15° to 83° in 78 sec <sup>1</sup>
Swing <sup>2</sup>	2 x 6.5 hp	2 x 4.8 kW	1.0 rpm

<sup>1</sup> Luffing speed figure shown is for crane without load. Speed varies according to load on hook.

<sup>2</sup> The boom with 90ft (27.4m) hook reach requires only one swing motor; booms with a hook reach of 127ft (38.7m) and longer require two swing motors.






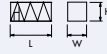


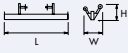
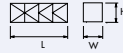
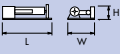
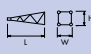

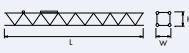
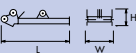
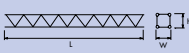

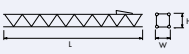
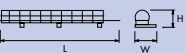

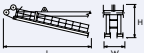
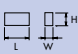

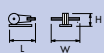

### Power Requirements

480 Volts — 3-phase — 60-cycle — 300 Amperes service with 105 hp (78 kW) AC hoist unit

Specifications subject to change without notice. For other configurations and specifications, contact Morrow Equipment.

# Component List

# Pecco SN 160-16

Description	Dimensions L x W x H	Weight	Description	Dimensions L x W x H	Weight
Machine Deck <sup>1</sup> with Turntable	 28'-4" x 8'-6" x 10'-5" 8.6m x 2.59m x 3.17m	24,800 lbs 11 250 kg	Tower Section S16	 14'-11" x 7'-7" x 7'-7" 4.55m x 2.3m x 2.3m	5,500 lbs 2 500 kg
Machine Deck <sup>2</sup>	 27'-7" x 7'-11" x 6'-5" 8.4m x 2.41m x 2.0m	17,000 lbs 7 710 kg	Top Climbing Unit with Hydraulics (S16)	 23'-6" x 9'-9" x 9'-3" 7.16m x 2.97m x 2.82m	13,200 lbs 5 990 kg
Slewing Ring Support with Slewing Ring <sup>3</sup>	 8'-6" x 8'-6" x 3'-11" 2.59m x 2.59m x 1.19m	7,800 lbs 3 540 kg	Tower Section S35	 19'-5" x 7'-10" x 8'-0" 5.92m x 2.4m x 2.44m	8,900 lbs 4 040 kg
Cab & Electrical Panel on Mounting Frame	 23'-5" x 5'-11" x 9'-9" 7.14m x 1.8m x 3.0m	6,400 lbs 2 900 kg	Transition Section S35/S16	 8'-1" x 7'-9" x 1'-1" 2.46m x 2.36m x 0.33m	1,610 lbs 730 kg
Counterweight Carriage	 12'-11" x 2'-6" x 2'-10" 3.93m x 0.76m x 0.86m	1,300 lbs 590 kg	Top Climbing Unit with Hydraulics (S35)	 29'-3" x 11'-6" x 11'-6" 8.9m x 3.5m x 3.5m	24,750 lbs 11 230 kg
Hoist Unit <sup>4</sup> (105 hp/78 kW)	 8'-11" x 5'-7" x 3'-8" 2.72m x 1.7m x 1.12m	6,000 lbs 2 720 kg	Boom Section ① (Butt)	 11'-6" x 5'-9" x 4'-4" 3.5m x 1.75m x 1.32m	1,330 lbs 600 kg
Luffing Winch <sup>4</sup> (105 hp/78 kW)	 5'-3" x 5'-0" x 3'-3" 1.6m x 1.52m x 0.3m	4,600 lbs 2 085 kg	Boom Section ② (Intermediate)	 38'-9" x 5'-9" x 4'-4" 11.8m x 1.75m x 1.32m	2,300 lbs 1 045 kg
A-Frame Top with Platforms	 40'-1" x 8'-2" x 5'-11" 12.2m x 2.5m x 1.8m	8,150 lbs 3 695 kg	Boom Section ③ (Intermediate)	 38'-9" x 5'-9" x 4'-4" 11.8m x 1.75m x 1.32m	2,300 lbs 1 045 kg
A-Frame Support	 31'-3" x 7" x 7" 9.5m x 0.18m x 0.18m	800 lbs 360 kg	Boom Section ④ (Intermediate)	 38'-9" x 5'-9" x 4'-9" 11.8m x 1.75m x 1.44m	2,600 lbs 1 180 kg
A-Frame Ladder	 38'-0" x 2'-9" x 3'-8" 11.6m x 0.84m x 1.12m	300 lbs 135 kg	Boom Section ⑤ (Tip)	 14'-6" x 5'-9" x 6'-3" 4.4m x 1.75m x 1.9m	1,700 lbs 770 kg
A-Frame Assembly <sup>5</sup>	 32'-4" x 7'-7" x 27'-1" 9.85m x 2.3m x 8.25m	10,050 lbs 4 550 kg	Boom Assembly <sup>6</sup> 164-ft (50.0m)	①②③④⑤ 178'-4" x 5'-9" x 6'-3" 54.36m x 1.75m x 1.9m	14,330 lbs 6 500 kg
Fixed Counterweight for 164-ft (50.0m) boom	 7'-11" x 5" x 3'-4" 2.4m x 0.13m x 1.02m	4,260 lbs 1 930 kg	Boom Assembly <sup>6</sup> 127-ft (38.7m)	①②③④⑤ 139'-7" x 5'-9" x 6'-3" 42.54m x 1.75m x 1.9m	11,830 lbs 5 365 kg
Counterweight	 3'-4" x 6" x 5'-3" 1.02m x 0.15m x 1.6m	3,750 lbs 1 700 kg	Boom Assembly <sup>6</sup> 90-ft (27.4m)	①②④⑤ 100'-11" x 5'-9" x 6'-3" 30.76m x 1.75m x 1.9m	9,330 lbs 4 230 kg
Sheave Block for Luffing Wire Rope	 4'-6" x 6'-1" x 2'-3" 1.37m x 1.85m x 0.69m	1,000 lbs 455 kg	Hook Block	 2'-5" x 1'-2" x 5'-9" 0.74m x 0.36m x 1.75m	900 lbs 410 kg

NOTE! Weights and dimensions are approximate. Scale components before lifting.

- <sup>1</sup> Includes machine deck with turntable, slewing ring, slewing ring support and slewing motors.  
<sup>2</sup> Includes machine deck, turntable upper part and slewing motors. Does not include slewing ring and slewing ring support.  
<sup>3</sup> Includes turntable lower part, slewing ring and slewing ring support. Does not include slewing motors.  
<sup>4</sup> Includes mounting frame. Does not include wire rope.  
<sup>5</sup> Includes A-frame top, A-frame support members (2 ea.) and access ladder with platforms.  
<sup>6</sup> Includes boom sections, pendant cables and luffing sheave block. Does not include hoist wire rope and hook block.



## Morrow Equipment C O M P A N Y, L. L. C.

3218 Pringle Road SE • P O Box 3306 • Salem, Oregon 97302-0306 USA  
 Tel. 503.585.5721 • Fax. 503.363.1172 • www.morrowequipment.com

The American home of  
**LIEBHERR**

Atlanta, GA • Charlotte, NC • Chicago, IL • Denver, CO • Honolulu, HI • Houston, TX • Los Angeles, CA • Las Vegas, NV  
 Millwood, NY • St. Louis, MO • San Francisco, CA • Seattle, WA • Miami, FL • Tampa, FL • Washington, DC  
 Sydney, Australia • Wellington, New Zealand • Vancouver, BC, Canada • Toronto, ON, Canada • México DF, México