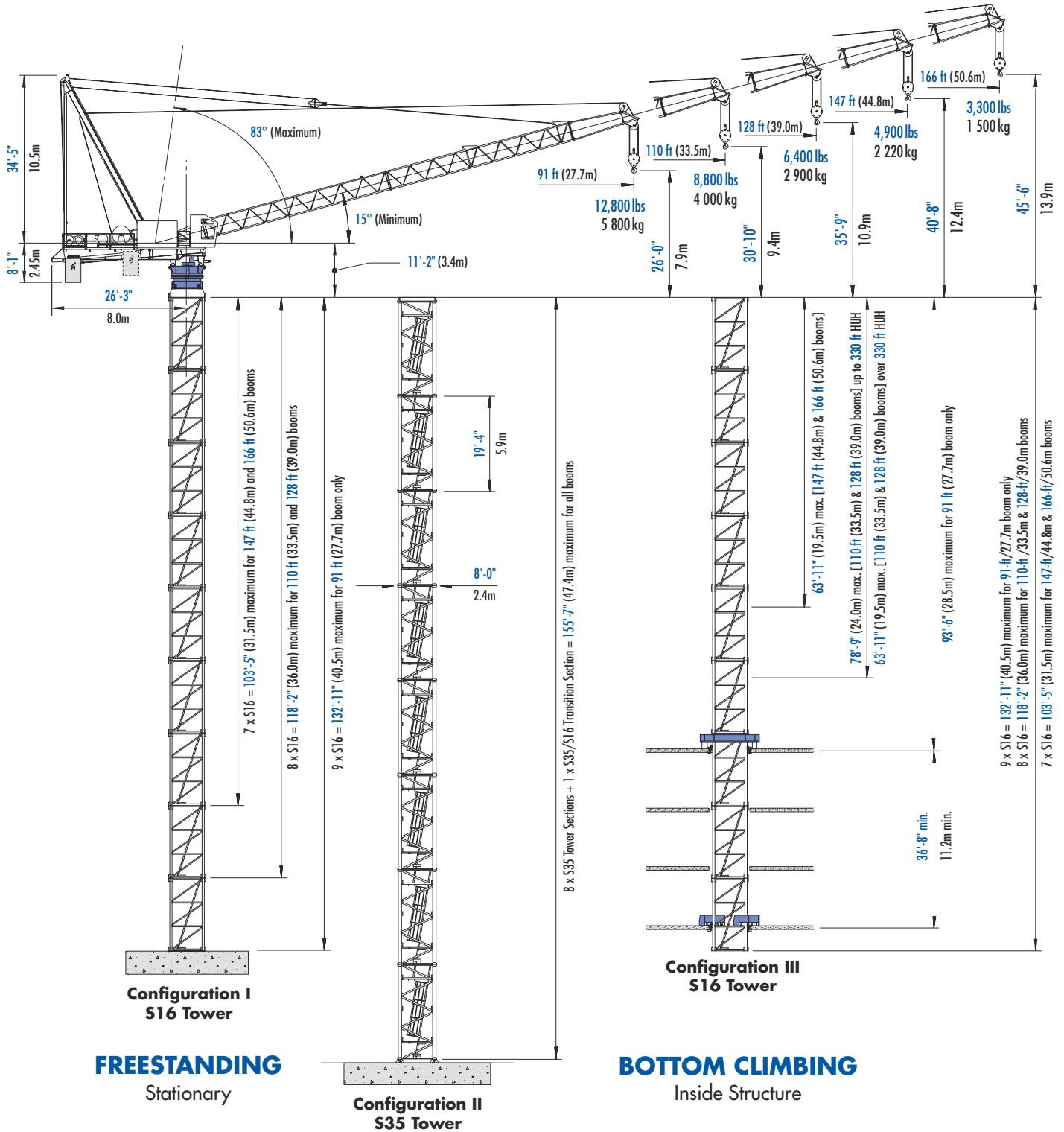


# Pecco SN 141

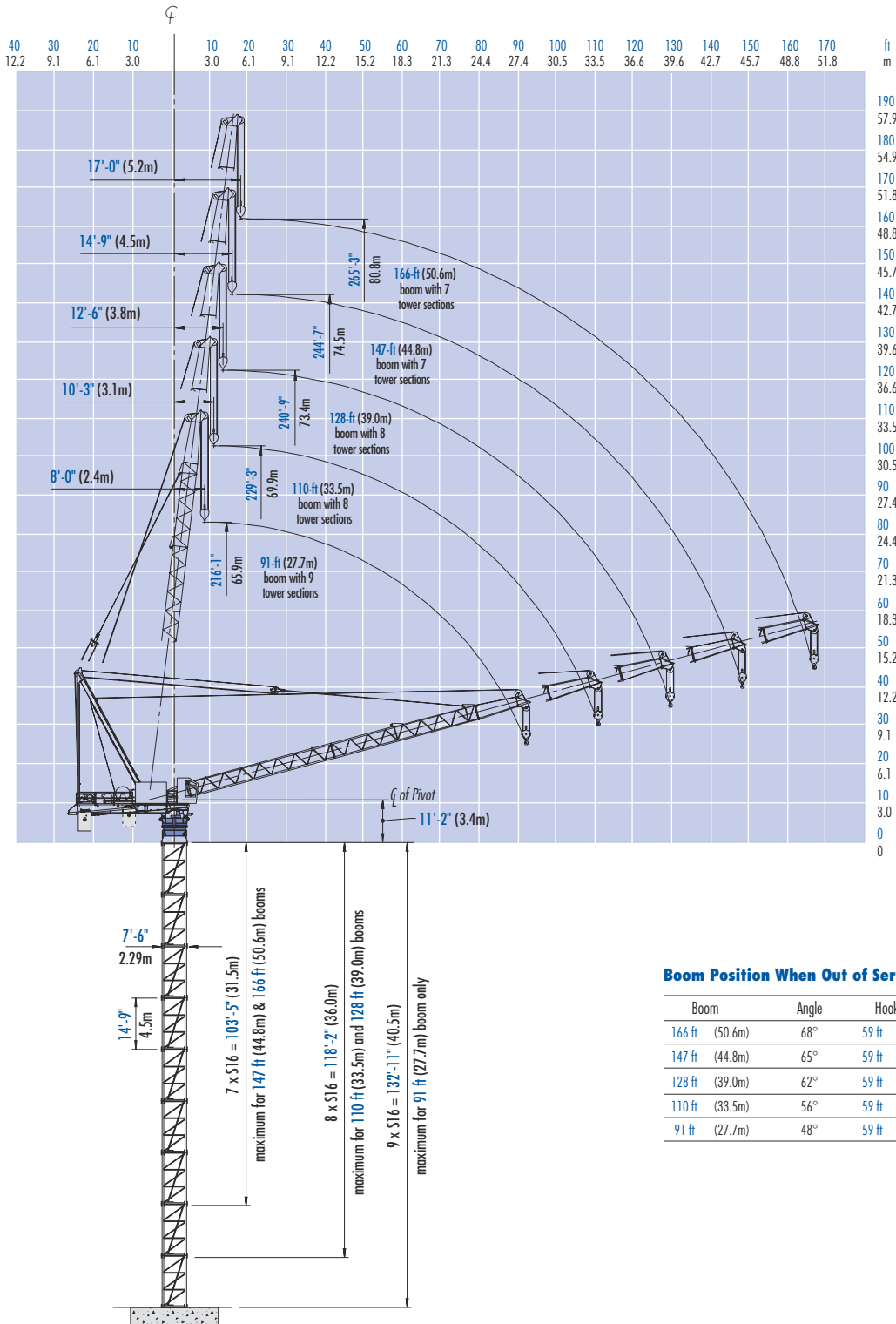
## LUFFING BOOM TOWER CRANE



# Morrow Equipment

# Configurations

# Pecco SN 141



**BOTTOM CLIMBING**  
with S16 Tower Sections  
Inside Structure

**IMPORTANT!** Please consult crane's operation manual before erecting, operating, climbing and dismantling crane.

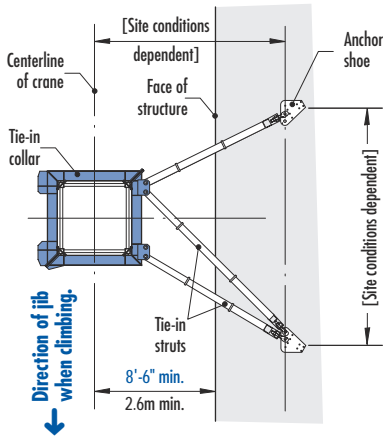
# Configurations

# Pecco SN 141

**NOTE!**

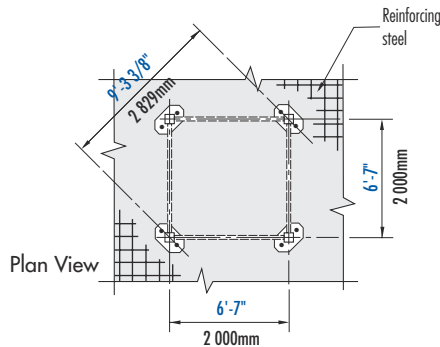
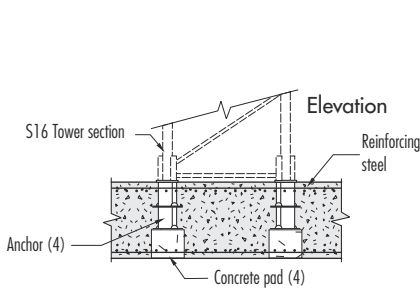
\* Lower the top climbing unit to the uppermost tie-in prior to operating crane at maximum hook height.

Pecco SN 141 can also be assembled using PC 1400 (P14) tower components. Consult Morrow Equipment for specific information regarding alternate tower configurations, dimensions, tie-in locations, reaction forces and slab openings.

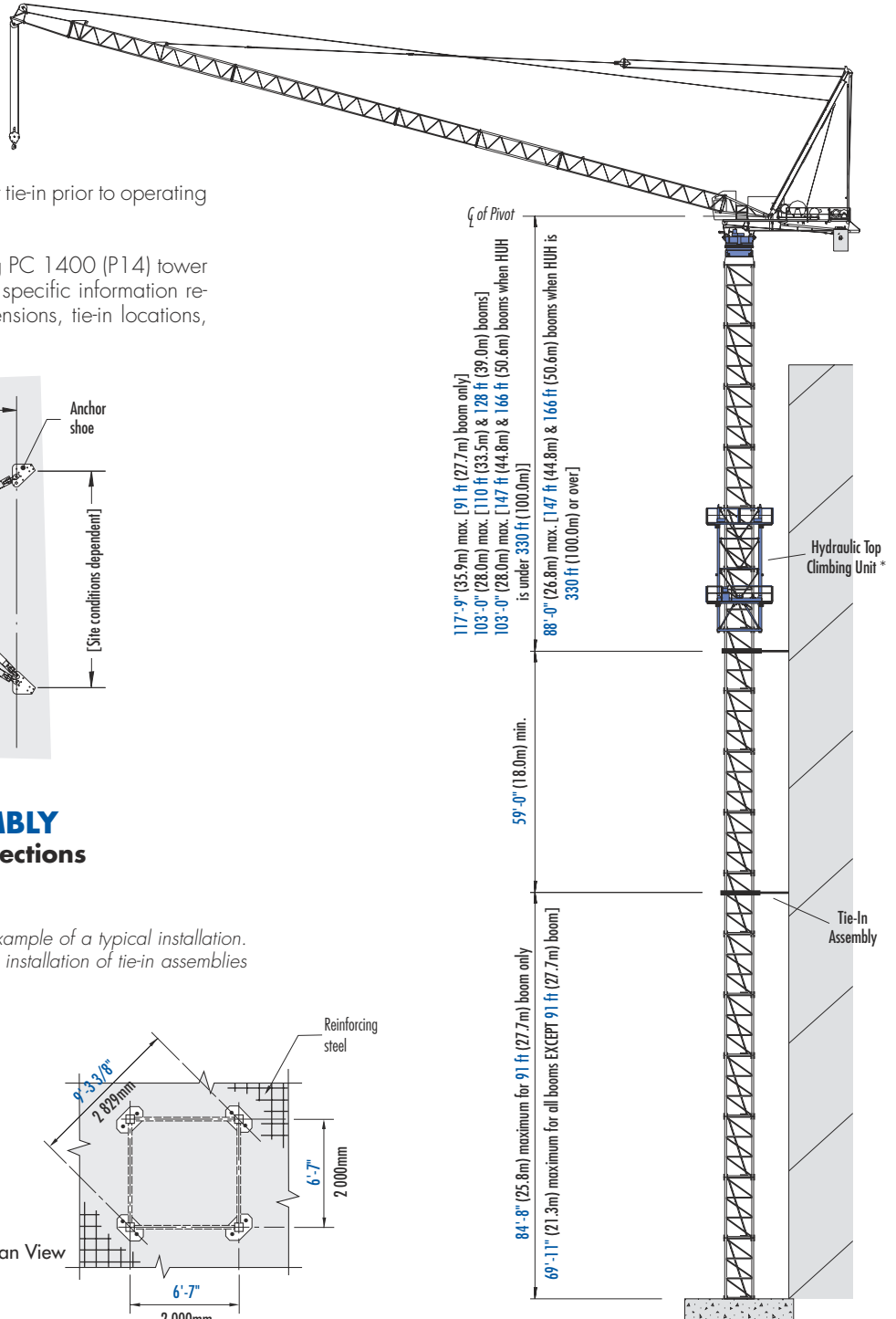


**TIE-IN ASSEMBLY**  
with S16 Tower Sections  
Plan View

**NOTE!** The tie-in assembly shown above is an example of a typical installation. Please note, however, that factors determining the installation of tie-in assemblies may vary due to project specific criteria.



**FOUNDATION DETAILS**  
with S16 Tower Sections  
Concrete Slab



**TOP CLIMBING**  
with S16 Tower Sections  
Tied to Structure

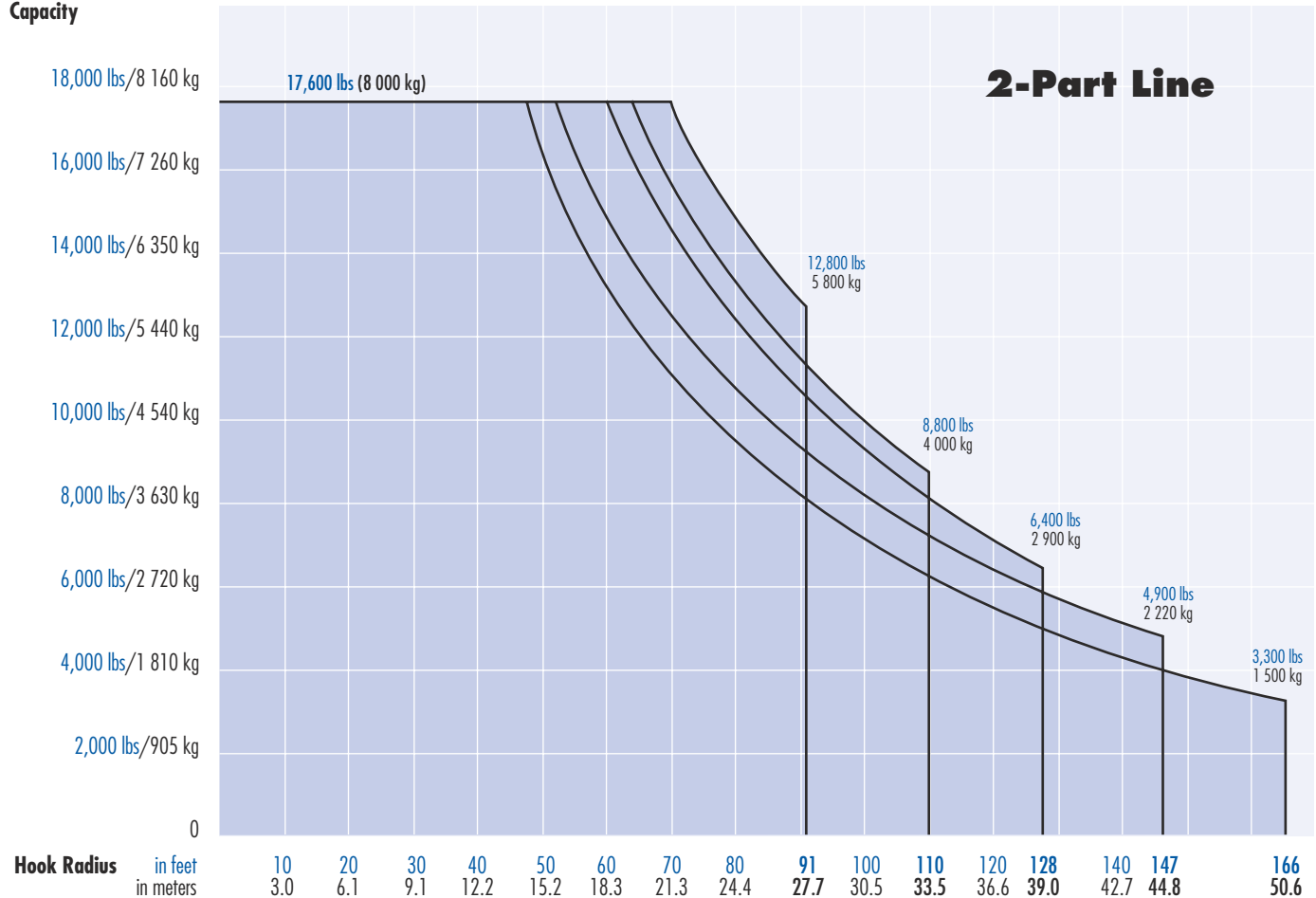
# Radius and Capacities

# Pecco SN 141

## 2-Part Line

Hook Radius	Maximum Capacity – Radius	ft m	10 3.0	20 6.1	30 9.1	40 12.2	50 15.2	60 18.3	70 21.3	80 24.4	91 27.7	100 30.5	110 33.5	120 36.6	128 39.0	140 42.7	147 44.8	160 48.8	166 50.6
166 ft 50.6m	17,600 lbs – 47 ft 8 000 kg – 14.3m	lbs kg	17,600 8 000	17,600 8 000	17,600 8 000	17,600 8 000	15,500 7 030	13,400 6 080	11,200 5 080	9,500 4 310	8,200 3 720	7,100 3 220	6,200 2 810	5,500 2 495	5,100 2 310	4,400 2 000	4,200 1 905	3,500 1 590	3,300 1 500
147 ft 44.8m	17,600 lbs – 52 ft 8 000 kg – 15.8m	lbs kg	17,600 8 000	17,600 8 000	17,600 8 000	17,600 8 000	17,600 8 000	15,200 6 895	12,800 5 805	10,800 4 900	9,300 4 220	8,400 3 810	7,500 3 400	6,600 3 000	6,000 2 720	5,300 2 405	4,900 2 220		
128 ft 39.0m	17,600 lbs – 60 ft 8 000 kg – 18.3m	lbs kg	17,600 8 000	17,600 8 000	17,600 8 000	17,600 8 000	17,600 8 000	17,600 8 000	14,800 6 715	12,300 5 580	10,600 4 810	9,300 4 220	8,200 3 720	7,100 3 220	6,400 2 900				
110 ft 33.5m	17,600 lbs – 64 ft 8 000 kg – 19.5m	lbs kg	17,600 8 000	17,600 8 000	17,600 8 000	17,600 8 000	17,600 8 000	17,600 8 000	15,600 7 075	13,200 5 990	11,200 5 080	9,900 4 490	8,800 4 000						
91 ft 27.7m	17,600 lbs – 70 ft 8 000 kg – 21.3m	lbs kg	17,600 8 000	17,600 8 000	17,600 8 000	17,600 8 000	17,600 8 000	17,600 8 000	17,600 8 000	15,000 6 800	12,800 5 800								

### Capacity



# SPECIFICATIONS

## Pecco Tower Crane Model SN 141

### Hoist Speed and Capacity

Hoist Unit	2-Part Line					
140 hp (105 kW) DC hoist unit Ward Leonard 4-speed gearbox Remote-controlled gear shifting	Gear *	Capacity		Line Speed		
	1 <sup>N</sup>	17,600 lbs	@	140 fpm	8 000 kg	@ 43 m/min
	1 <sup>F</sup>	17,600 lbs	@	180 fpm	8 000 kg	@ 55 m/min
	2 <sup>N</sup>	16,500 lbs	@	225 fpm	7 485 kg	@ 69 m/min
	2 <sup>F</sup>	13,200 lbs	@	280 fpm	5 990 kg	@ 85 m/min
	3 <sup>N</sup>	9,900 lbs	@	355 fpm	4 490 kg	@ 108 m/min
	3 <sup>F</sup>	7,900 lbs	@	450 fpm	3 585 kg	@ 137 m/min
	4 <sup>N</sup>	6,200 lbs	@	560 fpm	2 810 kg	@ 171 m/min
2P365	4 <sup>F</sup>	5,000 lbs	@	710 fpm	2 270 kg	@ 216 m/min

**NOTE!** Capacities and line speeds indicated will vary depending on the amount of hoist rope installed. This crane model may be equipped with a hoist unit other than that specified in the data above. To verify, check the serial number of the crane and refer to the Pecco SN 141 Operation Manual for additional information.

### Motor Information

Drive Unit	Horsepower	Kilowatts	Speed
Luffing <sup>1</sup>	105 hp	78 kW	15° to 83° in 78 sec <sup>1</sup>
Swing <sup>2</sup>	2 x 6.5 hp	2 x 4.8 kW	1.0 rpm

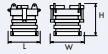
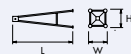
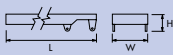




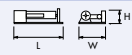
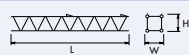
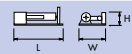
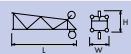



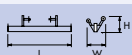

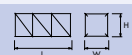





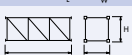





### Power Requirements

480 Volts — 3-phase — 60-cycle — 350 Amperes service with 140 hp (105 kW) DC hoist unit

Specifications subject to change without notice. For other configurations and specifications, contact Morrow Equipment.

# Component List

# Pecco SN 141

Description	Dimensions L x W x H	Weight	Description	Dimensions L x W x H	Weight
Turntable <sup>1</sup>	 8'-0" x 5'-5" x 9'-5" 2.44m x 1.65m x 2.87m	14,000 lbs 6 350 kg	Boom Section ① (Butt)	 11'-6" x 5'-9" x 4'-6" 3.5m x 1.75m x 1.37m	1,500 lbs 680 kg
Machine Deck with Platform	 30'-3" x 7'-0" x 5'-5" 9.22m x 2.13m x 1.65m	14,200 lbs 6 440 kg	Boom Section ② (Intermediate)	 38'-9" x 5'-9" x 4'-6" 11.8m x 1.75m x 1.37m	2,450 lbs 1 110 kg
Turntable with Machine Deck <sup>2</sup>	 31'-7" x 8'-10" x 10'-1" 9.62m x 2.7m x 3.08m	29,080 lbs 13 190 kg	Boom Section ③ (Intermediate)	 19'-6" x 5'-9" x 4'-6" 5.94m x 1.75m x 1.37m	1,300 lbs 590 kg
Cab & Electrical Panel on Mounting Frame	 16'-11" x 8'-0" x 7'-5" 5.16m x 2.44m x 2.26m	9,500 lbs 4 310 kg	Boom Section ④ (Intermediate)	 38'-9" x 5'-9" x 4'-6" 11.8m x 1.75m x 1.37m	2,300 lbs 1 045 kg
Hoist Unit <sup>3</sup> 140 hp (105 kW)	 9'-10" x 8'-3" x 4'-11" 3.0m x 2.51m x 1.5m	15,000 lbs 6 800 kg	Boom Section ⑤ (Intermediate)	 38'-9" x 5'-9" x 4'-11" 11.8m x 1.75m x 1.5m	2,700 lbs 1 225 kg
Luffing Winch <sup>4</sup> 105 hp (78 kW)	 7'-10" x 3'-11" x 2'-8" 2.39m x 1.19m x 0.81m	4,700 lbs 2 130 kg	Boom Section ⑥ with Sheaves (Tip)	 14'-6" x 5'-9" x 6'-3" 4.4m x 1.75m x 1.9m	1,700 lbs 770 kg
A-Frame Assembly (Front & Back Panels)	 38'-5" x 5'-1" x 18'-0" 11.7m x 1.55m x 5.5m	5,000 lbs 2 270 kg	Boom Assembly <sup>5</sup> 166-ft (50.5m)	①②③④⑤⑥ 178'-4" x 5'-9" x 6'-3" 54.36m x 1.75m x 1.9m	15,390 lbs 6 980 kg
A-Frame & Ladder (Front Panel)	 38'-5" x 5'-1" x 3'-3" 11.7m x 1.55m x 1.0m	4,200 lbs 1 905 kg	Boom Assembly <sup>5</sup> 147-ft (44.8m)	①②③④⑤⑥ 158'-11" x 5'-9" x 6'-3" 48.44m x 1.75m x 1.9m	13,940 lbs 6 325 kg
A-Frame (2-part Back Panel)	 32'-0" x 5'-6" x 6" 9.75m x 1.68m x 0.15m	800 lbs 360 kg	Boom Assembly <sup>5</sup> 128-ft (39.0m)	①②④⑤⑥ 139'-7" x 5'-9" x 6'-3" 42.54m x 1.75m x 1.9m	12,690 lbs 5 755 kg
Counterweight Carriage	 10'-5" x 2'-5" x 2'-7" 3.17m x 0.74m x 0.79m	880 lbs 400 kg	Boom Assembly <sup>5</sup> 110-ft (33.5m)	①②③⑤⑥ 120'-3" x 5'-9" x 6'-3" 36.65m x 1.75m x 1.9m	11,390 lbs 5 165 kg
Counterweight Block	 3'-4" x 6" x 5'-3" 1.02m x 0.15m x 1.6m	3,850 lbs 1 750 kg	Boom Assembly <sup>5</sup> 91-ft (27.7m)	①②⑤⑥ 100'-11" x 5'-9" x 6'-3" 30.76m x 1.75m x 1.9m	10,350 lbs 4 695 kg
Tower Section S16	 14'-11" x 7'-7" x 7'-7" 4.55m x 2.3m x 2.3m	5,500 lbs 2 500 kg	Sheave Block for Luffing Wire Rope	 4'-6" x 6'-1" x 2'-3" 1.37m x 1.85m x 0.69m	740 lbs 335 kg
Top Climbing Unit with Hydraulics (S16)	 23'-6" x 9'-9" x 9'-3" 7.16m x 2.97m x 2.82m	13,200 lbs 5 990 kg	Hook Block	 2'-6" x 1'-2" x 5'-9" 0.76m x 0.36m x 1.75m	1,200 lbs 545 kg
Climbing Traverse S16	 6'-5" x 5'-3" x 1'-0" 1.96m x 1.6m x 0.3m	400 lbs 180 kg	Tower Section S35	 19'-5" x 7'-10" x 8'-0" 5.92m x 2.4m x 2.4m	8,900 lbs 4 040 kg
Tower Section P14	 14'-0" x 6'-2" x 6'-2" 4.27m x 1.88m x 1.88m	3,800 lbs 1 160 kg	Top Climbing Unit with Hydraulics (S35)	 29'-3" x 11'-6" x 11'-6" 8.9m x 3.5m x 3.5m	24,750 lbs 11 230 kg
Bottom Climbing Unit with Hydraulics (P14)	 18'-0" x 6'-3" x 6'-2" 5.5m x 1.9m x 1.88m	11,355 lbs 5 150 kg	Transition Section S35/S16	 8'-1" x 7'-9" x 1'-1" 2.46m x 2.36m x 0.33m	1,610 lbs 730 kg
Slipping Tower Section P14	 14'-0" x 6'-2" x 6'-2" 4.27m x 1.88m x 1.88m	4,250 lbs 1 930 kg	Transition Section S16/P14	 8'-7" x 8'-7" x 2'-0" 2.6m x 2.6m x 0.61m	4,000 lbs 1 815 kg

**NOTE:** Weights and dimensions are approximate. Scale components before lifting.

- <sup>1</sup> Complete turntable assembly includes slewing ring, slewing ring support, upper turntable, swing motors and S16/P14 transition.
- <sup>2</sup> Includes complete turntable assembly, machine deck and counterweight carriage.
- <sup>3</sup> Includes frame. Does not include wire rope.
- <sup>4</sup> Includes frame. Does not include wire rope.
- <sup>5</sup> Includes boom sections, luffing sheave block and pendant cables. Does not include catwalk, hoist wire rope, luffing wire rope and hook block.



## Morrow Equipment C O M P A N Y, L. L. C.

3218 Pringle Road SE • P O Box 3306 • Salem, Oregon 97302-0306 USA  
Tel. 503.585.5721 • Fax. 503.363.1172 • www.morrowequipment.com

The American home of  
**LIEBHERR**

Atlanta, GA • Charlotte, NC • Chicago, IL • Denver, CO • Honolulu, HI • Houston, TX • Los Angeles, CA • Las Vegas, NV  
Millwood, NY • St. Louis, MO • San Francisco, CA • Seattle, WA • Miami, FL • Tampa, FL • Washington, DC  
Sydney, Australia • Wellington, New Zealand • Vancouver, BC, Canada • Toronto, ON, Canada • México DF, México