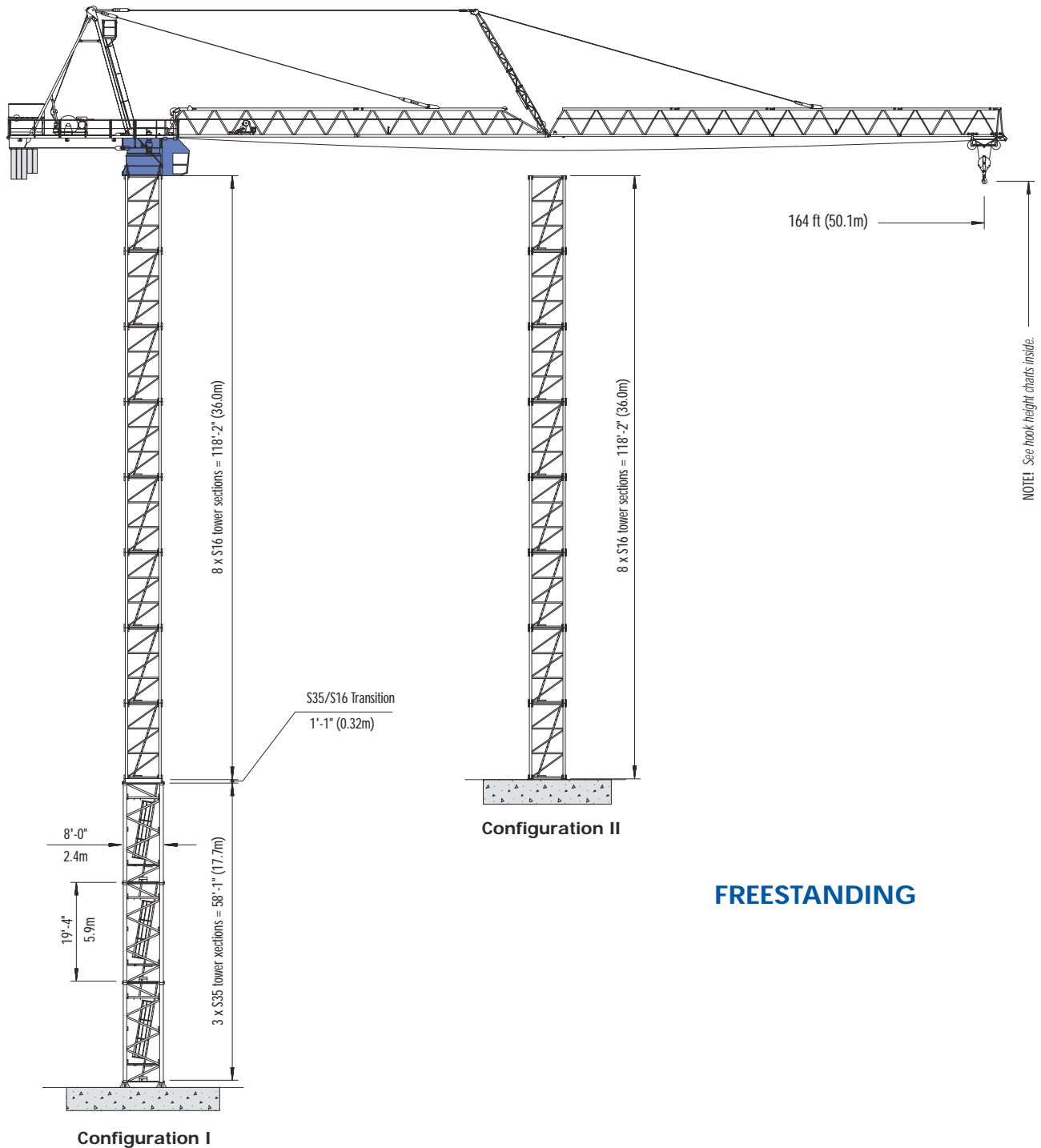
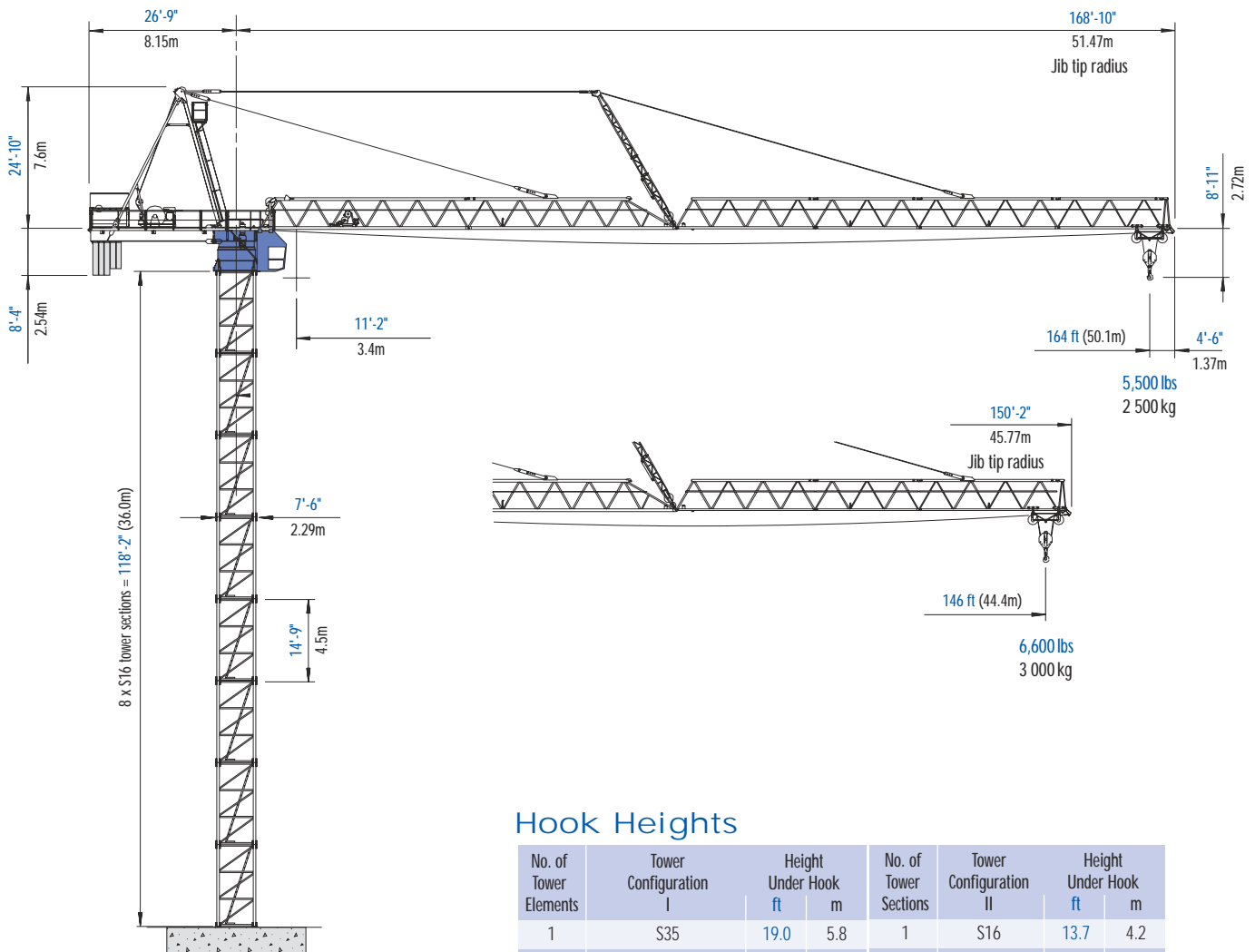


Pecco SKK 140H

TOWER CRANE



Morrow Equipment



FREESTANDING
with S16 Tower Sections
on static concrete foundation

NOTE! Consult Morrow for specific information regarding alternate tower configurations, foundation details, dimensions and reaction forces.

Hook Heights

No. of Tower Elements	Tower Configuration I	Height Under Hook		No. of Tower Sections	Tower Configuration II	Height Under Hook	
		ft	m			ft	m
1	S35	19.0	5.8	1	S16	13.7	4.2
2	S35	38.3	11.7	2	S16	28.4	8.7
3	S35	57.7	17.6	3	S16	43.2	13.2
4	S35/S16 Transition	58.4	17.8	4	S16	58.0	17.7
5	S16	73.2	22.3	5	S16	72.8	22.2
6	S16	87.9	26.8	6	S16	87.5	26.7
7	S16	102.7	31.3	7	S16	102.3	31.2
8	S16	117.5	35.8	8	S16 **	117.1	35.7
9	S16	132.2	40.3				
10	S16	147.0	44.8				
11	S16	161.8	49.3				
12	S16 *	176.6	53.8				

** Lower top climbing unit to base of crane prior to operating crane at maximum hook height.

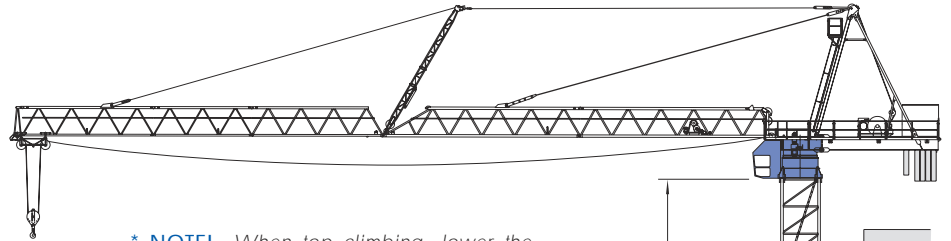
* Remove top climbing unit from crane prior to operating crane at maximum hook height.

Other tower combinations are possible. Contact Morrow Equipment for additional information.

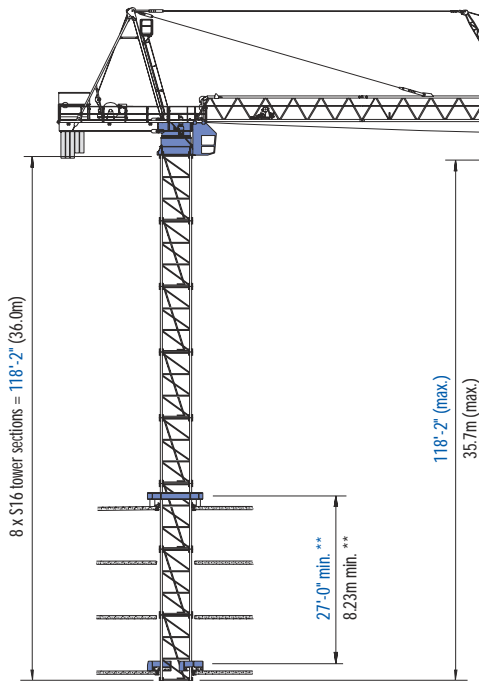
Configurations

Pecco SKK 140H

IMPORTANT! Please consult Operations Manual before erecting, operating, climbing, servicing or dismantling crane.



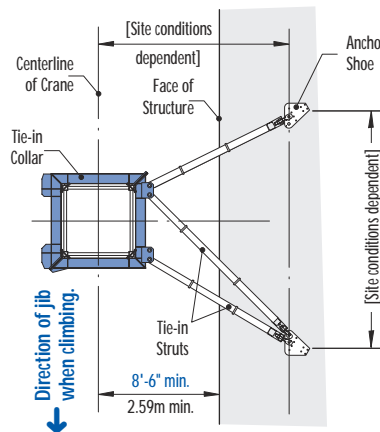
*** NOTE!** When top climbing, lower the hydraulic climbing unit to the uppermost tie-in location prior to operating crane at maximum tower configuration. Restrictions apply, please contact Morrow for additional information.



BOTTOM CLIMBING
with S16 Tower Sections
climbing inside structure

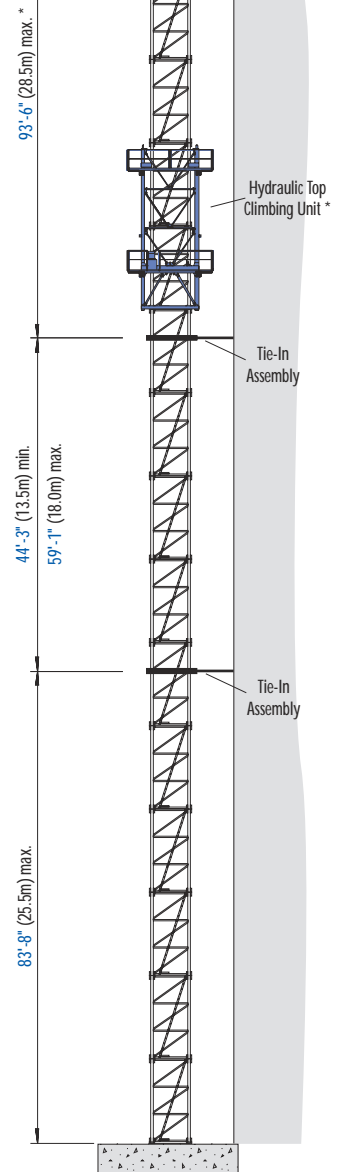
****NOTE!** When bottom climbing, the minimum distance between climbing frames is determined by number of tower sections installed above uppermost climbing frame and length of jib assembly installed. Refer to Operations Manual for additional information.

NOTE! Consult Morrow for specific information regarding alternate tower configurations, tie-in locations, dimensions, reaction forces and slab opening requirements.



TIE-IN ASSEMBLY
with S16 Tower Sections
plan view

NOTE! The tie-in assembly shown above is an example of a typical installation. Please note, however, that factors determining the installation of tie-in assemblies may vary due to project specific conditions.



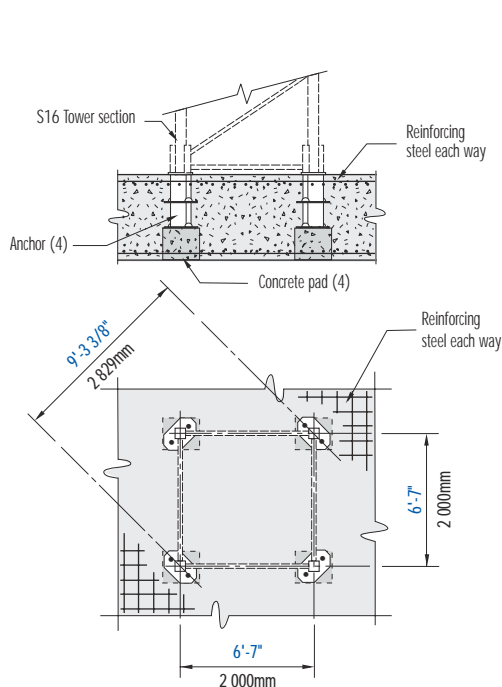
TOP CLIMBING
with S16 Tower Sections
tied-in to structure

Radius and Capacities for 2-Part Line

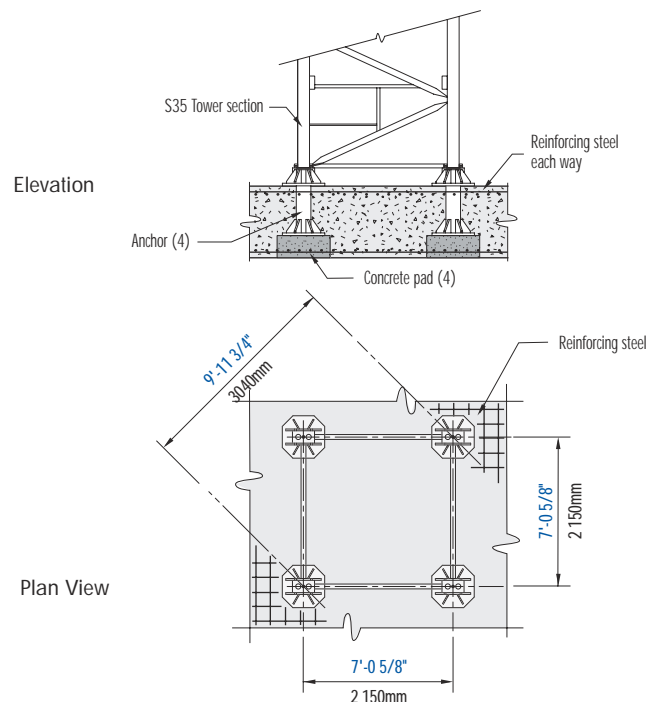
Hook Radius	Maximum Capacity – Radius	ft m	60.7 18.5	67.6 20.6	73.8 22.5	79.1 24.1	85.3 26.0	91.9 28.0	98.4 30.0	105.0 32.0	111.5 34.0	118.1 36.0	124.7 38.0	131.3 40.0	137.8 42.0	146 44.4	150.9 46.0	157.5 48.0	164 50.1	
164 ft 50.1m	13,890 lbs – 73.8 ft 6 300 kg – 22.5m	lbs kg	13,890 6 300	13,890 6 300	13,890 6 300	12,875 5 840	11,840 5 370	10,915 4 950	10,100 4 580	9,370 4 250	8,750 3 970	8,180 3 710	7,695 3 490	7,230 3 280	6,835 3 100	6,395 2 900	6,130 2 780	5,820 2 640	5,500 2 500	
146 ft 44.4m	13,890 lbs – 76.1 ft 6 300 kg – 23.2m	lbs kg	13,890 6 300	13,890 6 300	13,890 6 300	13,295 6 030	12,235 5 550	11,265 5 110	10,430 4 730	9,680 4 390	9,040 4 100	8,465 3 840	7,960 3 610	7,495 3 400	7,055 3 200	6,600 3 000				

Radius and Capacities for 4-Part Line

Hook Radius	Maximum Capacity – Radius	ft m	37.7 11.5	54.1 16.5	73.8 22.5	79.1 24.1	85.3 26.0	91.9 28.0	98.4 30.0	105.0 32.0	111.5 34.0	118.1 36.0	124.7 38.0	131.3 40.0	137.8 42.0	146 44.4	150.9 46.0	157.5 48.0	164 50.1	
164 ft 50.1m	27,560 lbs – 37.7 ft 12 500 kg – 11.5m	lbs kg	27,560 12 500	18,518 8 400	12,900 5 850	11,885 5 390	10,825 4 910	9,875 4 480	9,040 4 100	8,310 3 770	7,670 3 480	7,120 3 230	6,590 2 990	6,150 2 790	5,730 2 600	5,315 2 410	5,005 2 270	4,695 2 130	4,400 2 000	
146 ft 44.4m	27,560 lbs – 39.0 ft 12 500 kg – 11.9m	lbs kg	27,560 12 500	19,070 8 650	13,315 6 040	12,260 5 560	11,180 5 070	10,210 4 630	9,350 4 240	8,600 3 900	7,960 3 610	7,365 3 340	6,855 3 110	6,375 2 890	5,950 2 700	5,500 2 500				



FOUNDATION DETAILS
with S16 Tower
on concrete slab



FOUNDATION DETAILS
with S35/S16 Tower
on concrete slab

Hoist Speed and Capacity

Hoist Unit	2-Part Line				
	Gear	Capacity	Line Speed	Capacity	Line Speed
60 hp (45 kW) AC hoist unit 4-speed gearbox Remote-controlled gear shifting Eddy current brake	1	up to 13,890 lbs	@ 112 fpm	up to 6 300 kg	@ 34 m/min
	2	up to 9,920 lbs	@ 177 fpm	up to 4 500 kg	@ 54 m/min
	3	up to 6,175 lbs	@ 282 fpm	up to 2 800 kg	@ 86 m/min
	4	up to 3,970 lbs	@ 440 fpm	up to 1 800 kg	@ 134 m/min
	4-Part Line				
	1	up to 27,560 lbs	@ 56 fpm	up to 12 500 kg	@ 17 m/min
	2	up to 19,840 lbs	@ 89 fpm	up to 9 000 kg	@ 27 m/min
	3	up to 12,345 lbs	@ 141 fpm	up to 5 600 kg	@ 43 m/min
4	up to 7,935 lbs	@ 220 fpm	up to 3 600 kg	@ 67 m/min	

2P160
4PO80

NOTE! Capacities and line speeds indicated will vary depending on the amount of hoist rope installed. This crane model may be equipped with a hoist unit other than that specified in the data above. To verify, check the serial number of the crane and refer to the Pecco SKK 140H Operations Manual for additional information.

Motor Information

Drive Unit	Horsepower	Kilowatts	Speed
Swing	2 x 6.5 hp	2 x 4.8 kW	0.8 rpm
Trolley (2-part)	6.5 hp	4.8 kW	250 fpm (75m/min) up to 13,890 lbs (6 300 kg)
Trolley (4-part)	6.5 hp	4.8 kW	125 fpm (37m/min) up to 27,600 lbs (12 500 kg)

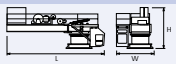










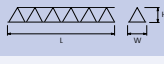

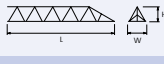
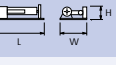
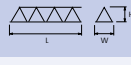



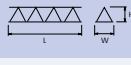


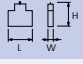
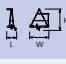

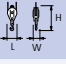
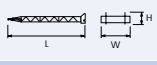
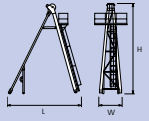
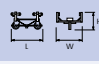
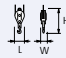
Power Requirements

480 Volts — 3-phase — 60-cycle — 100 Amperes service

Specifications subject to change without notice. For other configurations and specifications, contact Morrow Equipment.

Component List

Pecco SKK 140H

Description	Dimensions L x W x H	Weight	Description	Dimensions L x W x H	Weight
Machine Deck ¹ w/Turntable & Cab	 33'-1" x 13'-9" x 13'-4" 10.08m x 4.2m x 4.06m	35,030 lbs 15 890 kg	Tower Section S16	 14'-11" x 7'-7" x 7'-7" 4.55m x 2.3m x 2.3m	5,500 lbs 2 500 kg
Machine Deck ² w/o Turntable & Cab	 25'-3" x 8'-0" x 8'-8" 7.7m x 2.41m x 2.64m	16,350 lbs 7 415 kg	Top Climbing Unit with Hydraulics (S16)	 23'-6" x 9'-9" x 9'-3" 7.16m x 2.97m x 2.82m	13,200 lbs 5 990 kg
Turntable with Cab, ³ Platform & Handrails	 13'-5" x 13'-9" x 10'-4" 4.1m x 4.2m x 3.15m	18,780 lbs 8 520 kg	Tower Section S35	 19'-5" x 7'-10" x 8'-0" 5.92m x 2.4m x 2.44m	8,900 lbs 4 040 kg
Turntable (w/o Cab) ⁴ Upper & Lower Parts	 9'-1" x 8'-5" x 8'-1" 2.78m x 2.57m x 2.46m	16,310 lbs 7 400 kg	Transition Section S35/S16	 8'-1" x 7'-9" x 1'-1" 2.46m x 2.36m x 0.33m	1,610 lbs 730 kg
Turntable Upper Part ⁵	 9'-1" x 8'-5" x 4'-6" 2.78m x 2.57m x 1.37m	8,710 lbs 3 950 kg	Top Climbing Unit with Hydraulics (S35)	 29'-3" x 11'-6" x 11'-6" 8.9m x 3.5m x 3.5m	24,750 lbs 11 230 kg
Turntable Lower Part ⁶	 8'-5" x 8'-5" x 3'-7" 2.57m x 2.57m x 1.09m	7,600 lbs 3 450 kg	Jib Section ① (Butt)	 38'-2" x 5'-7" x 7'-1" 11.63m x 1.69m x 2.15m	7,100 lbs 3 220 kg
Operator's Cab	 5'-4" x 3'-9" x 6'-7" 1.62m x 1.14m x 2m	770 lbs 350 kg	Jib Section ② (Intermediate)	 38'-1" x 5'-7" x 6'-5" 11.61m x 1.69m x 1.95m	4,100 lbs 1 860 kg
Hoist Unit ⁷ (60 hp/45 kW)	 7'-0" x 5'-9" x 3'-10" 2.14m x 1.76m x 1.16m	7,800 lbs 3 540 kg	Jib Section ③ (Intermediate)	 25'-8" x 6'-0" x 6'-3" 7.82m x 1.82m x 1.9m	1,450 lbs 655 kg
Ballasting Frame for Counterweights	 6'-11" x 5" x 4'-0" 2.11m x 0.13m x 1.22m	350 lbs 160 kg	Jib Section √ (Intermediate)	 19'-4" x 5'-7" x 6'-5" 5.9m x 1.69m x 1.95m	1,180 lbs 535 kg
A-Frame (Pre-Assembly)	 27'-7" x 5'-11" x 2'-8" 8.4m x 1.8m x 0.81m	7,935 lbs 3 600 kg	Jib Section ⑤ (Intermediate)	 25'-7" x 5'-6" x 6'-1" 7.81m x 1.68m x 1.85m	1,300 lbs 590 kg
Counterweight Block A	 9'-11" x 11" x 7'-5" 3m x 0.28m x 2.26m	8,820 lbs 4 000 kg	Jib Section ≈ (Intermediate)	 19'-4" x 5'-7" x 5'-10" 5.9m x 1.69m x 1.78m	1,000 lbs 455 kg
Counterweight Block B	 7'-3" x 11" x 6'-2" 2.2m x 0.28m x 1.88m	5,400 lbs 2 450 kg	Jib Section Δ (Tip)	 3'-1" x 6'-2" x 6'-10" 0.95m x 1.88m x 2.09m	330 lbs 150 kg
2-Part Trolley	 6'-7" x 3'-2" x 6'-3" 2m x 0.66m x 1.1m	750 lbs 360 kg	Jib Assembly Part 1 ⁸ for Jibs 146 ft to 164 ft	①② 74'-10" x 5'-7" x 7'-1" 22.8m x 1.69m x 2.15m	14,900 lbs 6 760 kg
2-Part Hook Block	 1'-1" x 2'-2" x 3'-8" 0.33m x 0.97m x 1.9m	800 lbs 340 kg	Jib Assembly Part 2 ⁹ for 164-ft (50.1m) jib	③√⑤≈Δ 89'-10" x 6'-2" x 6'-10" 27.37m x 1.88m x 2.09m	5,760 lbs 2 610 kg
Jib Rope Spreader with Suspension Ropes	 28'-9" x 5'-0" x 2'-4" 8.8m x 1.52m x 0.71m	2,050 lbs 930 kg	Jib Assembly Part 2 ⁹ for 146-ft (44.4m) jib	③√⑤Δ 71'-1" x 6'-2" x 6'-10" 21.67m x 1.88m x 2.09m	4,760 lbs 2 160 kg
A-frame Assembly with Ladder, Platform and Handrails	 20'-4" x 5'-11" x 25'-1" 6.2m x 1.8m x 7.65m	7,935 lbs 3 600 kg	4-Part Trolley	 7'-4" x 6'-5" x 3'-3" 2.23m x 1.95m x 1m	1,100 lbs 500 kg
			4-Part Hook Block	 11" x 1'-9" x 5'-4" 0.28m x 0.53m x 1.63m	1,100 lbs 500 kg

NOTE! Weights and dimensions are approximate. Scale components before lifting.

- ¹ Machine Deck (complete) includes machine deck, hoist unit, electrical panels, turntable, swing motors, operator's cab, platforms and handrails.
- ² Includes machine deck, hoist unit, electrical panels and handrails.
- ³ Includes turntable upper & lower parts, slewing ring, slewing ring support, swing motors, operator's cab with access platform and handrails.
- ⁴ Includes turntable upper & lower parts, swing motors, slewing ring and slewing ring support.

- ⁵ Upper Part includes swing motors. Does not include slewing ring & slewing ring support.
- ⁶ Lower Part includes slewing ring & slewing ring support. Does not include turntable upper part & swing motors.
- ⁷ Does not include wire rope.
- ⁸ Includes jib butt section, jib section #2, trolley drive unit, trolley wire rope, jib rope spreader, 2-part trolley and hook block. If 4-part application is used, weight increases by 650 lbs (295 kg) for 4-part trolley and hook block.
- ⁹ Includes jib sections and suspension ropes.



Morrow Equipment C O M P A N Y, L. L. C.

3218 Pringle Road SE • P O Box 3306 • Salem, Oregon 97302-0306 USA
Tel. 503.585.5721 • Fax. 503.363.1172 • www.morrowequipment.com

The American home of
LIEBHERR
TOWER CRANES

Atlanta, GA • Charlotte, NC • Chicago, IL • Denver, CO • Honolulu, HI • Houston, TX • Los Angeles, CA • Las Vegas, NV
Millwood, NY • St. Louis, MO • San Francisco, CA • Seattle, WA • Miami, FL • Tampa, FL • Washington, DC
Sydney, Australia • Wellington, New Zealand • Vancouver, BC, Canada • Toronto, ON, Canada • México DF, México