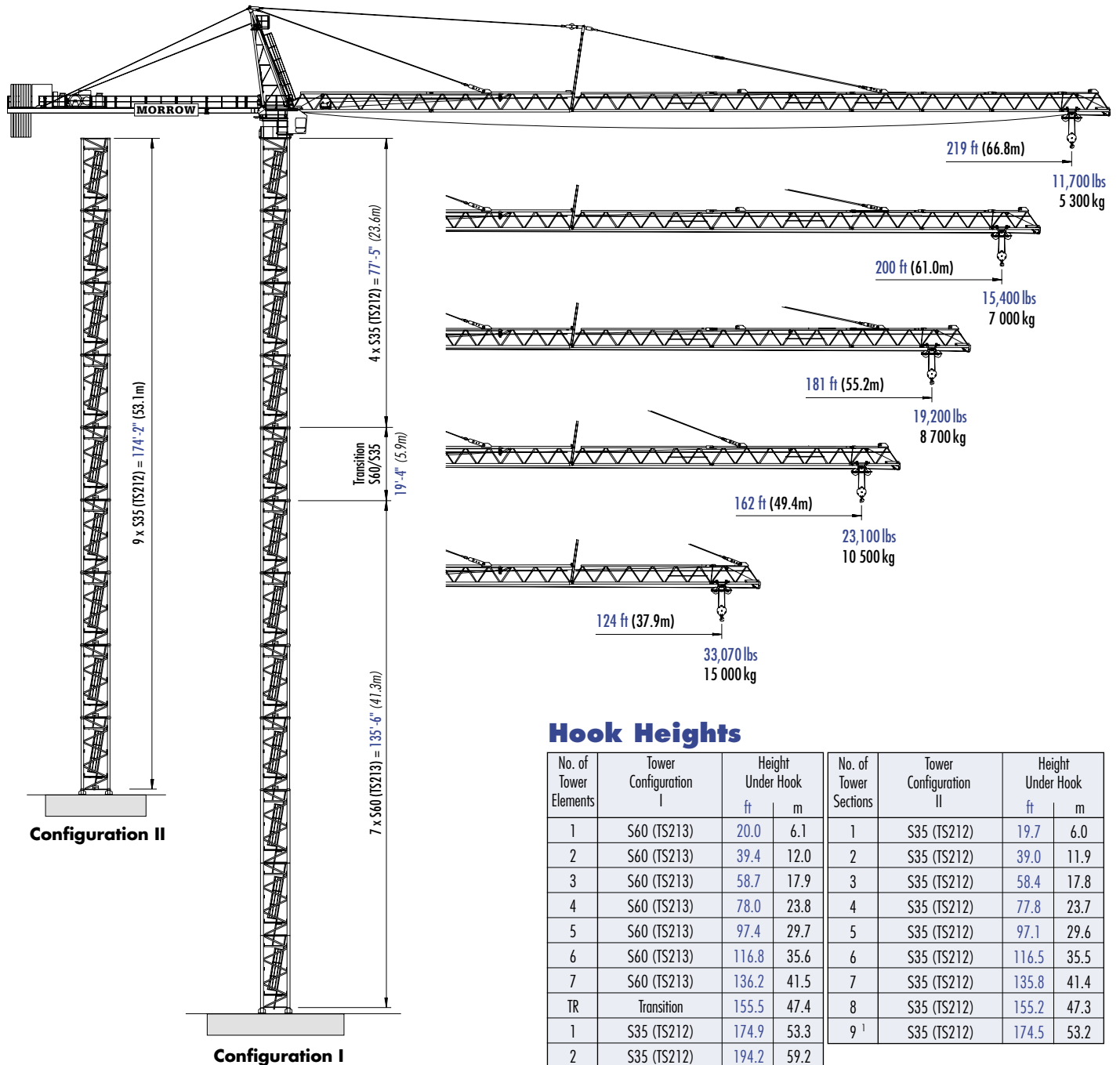


Peiner SK 500-30

TOWER CRANE



Hook Heights

| No. of Tower Elements | Tower Configuration I | Height Under Hook | | No. of Tower Sections | Tower Configuration II | Height Under Hook | |
|-----------------------|-----------------------|-------------------|------|-----------------------|------------------------|-------------------|------|
| | | ft | m | | | ft | m |
| 1 | S60 (TS213) | 20.0 | 6.1 | 1 | S35 (TS212) | 19.7 | 6.0 |
| 2 | S60 (TS213) | 39.4 | 12.0 | 2 | S35 (TS212) | 39.0 | 11.9 |
| 3 | S60 (TS213) | 58.7 | 17.9 | 3 | S35 (TS212) | 58.4 | 17.8 |
| 4 | S60 (TS213) | 78.0 | 23.8 | 4 | S35 (TS212) | 77.8 | 23.7 |
| 5 | S60 (TS213) | 97.4 | 29.7 | 5 | S35 (TS212) | 97.1 | 29.6 |
| 6 | S60 (TS213) | 116.8 | 35.6 | 6 | S35 (TS212) | 116.5 | 35.5 |
| 7 | S60 (TS213) | 136.2 | 41.5 | 7 | S35 (TS212) | 135.8 | 41.4 |
| TR | Transition | 155.5 | 47.4 | 8 | S35 (TS212) | 155.2 | 47.3 |
| 1 | S35 (TS212) | 174.9 | 53.3 | 9 ¹ | S35 (TS212) | 174.5 | 53.2 |
| 2 | S35 (TS212) | 194.2 | 59.2 | | | | |
| 3 | S35 (TS212) | 213.6 | 65.1 | | | | |
| 4 ¹ | S35 (TS212) | 232.9 | 71.0 | | | | |

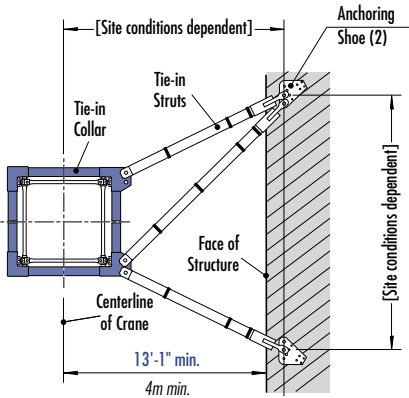
¹ Lower the top climbing unit to base of crane prior to operating crane at maximum hook height. Other tower combinations are possible, contact Morrow Equipment for additional information.



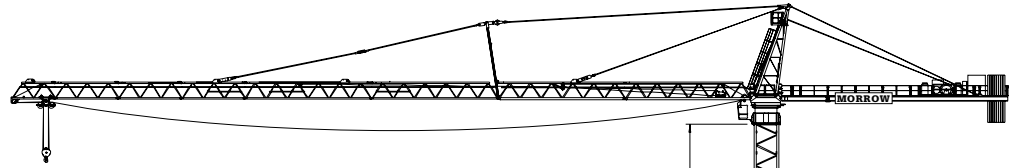
Morrow Equipment

Configurations

Peiner SK 500-30



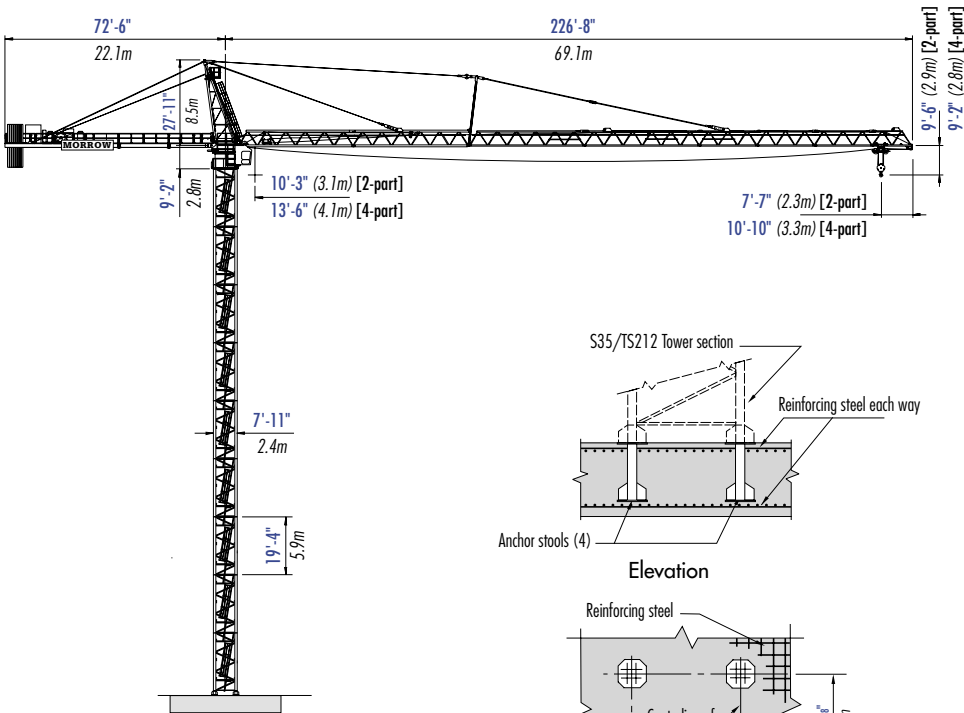
TIE-IN ASSEMBLY
Plan view



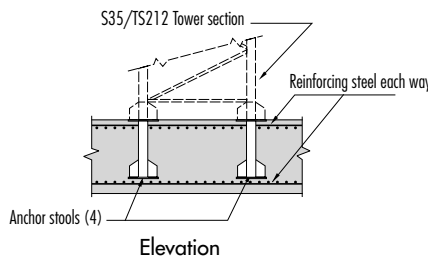
*** NOTE!** Lower the top climbing unit to the uppermost tie-in prior to operating crane at maximum hook height.

Consult Morrow Equipment for specific information regarding dimensions, tie-in locations, reaction forces and slab openings.

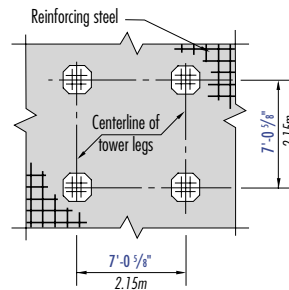
Please consult crane's operation manual before erecting, operating, servicing and dismantling crane.



FREESTANDING
with S35/TS212 tower
on concrete slab

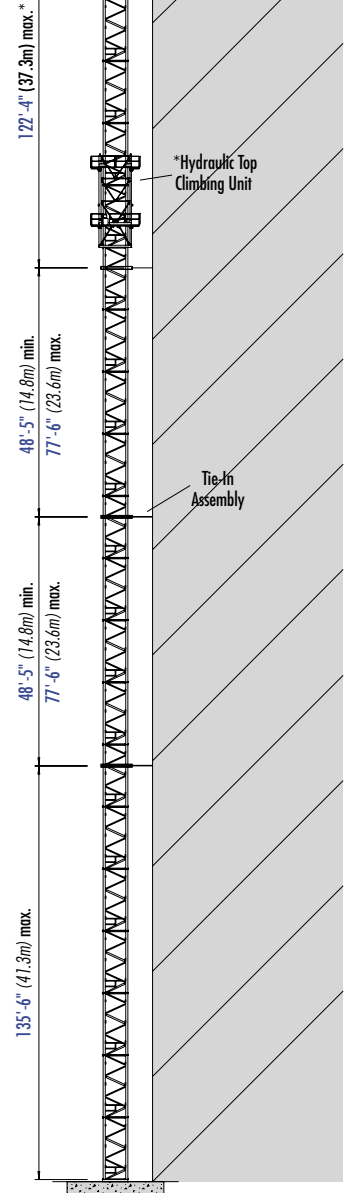


Elevation



Plan View

FOUNDATION DETAILS
Concrete slab



TOP CLIMBING
with S35/TS212 tower
Tied to structure

Radius and Capacities

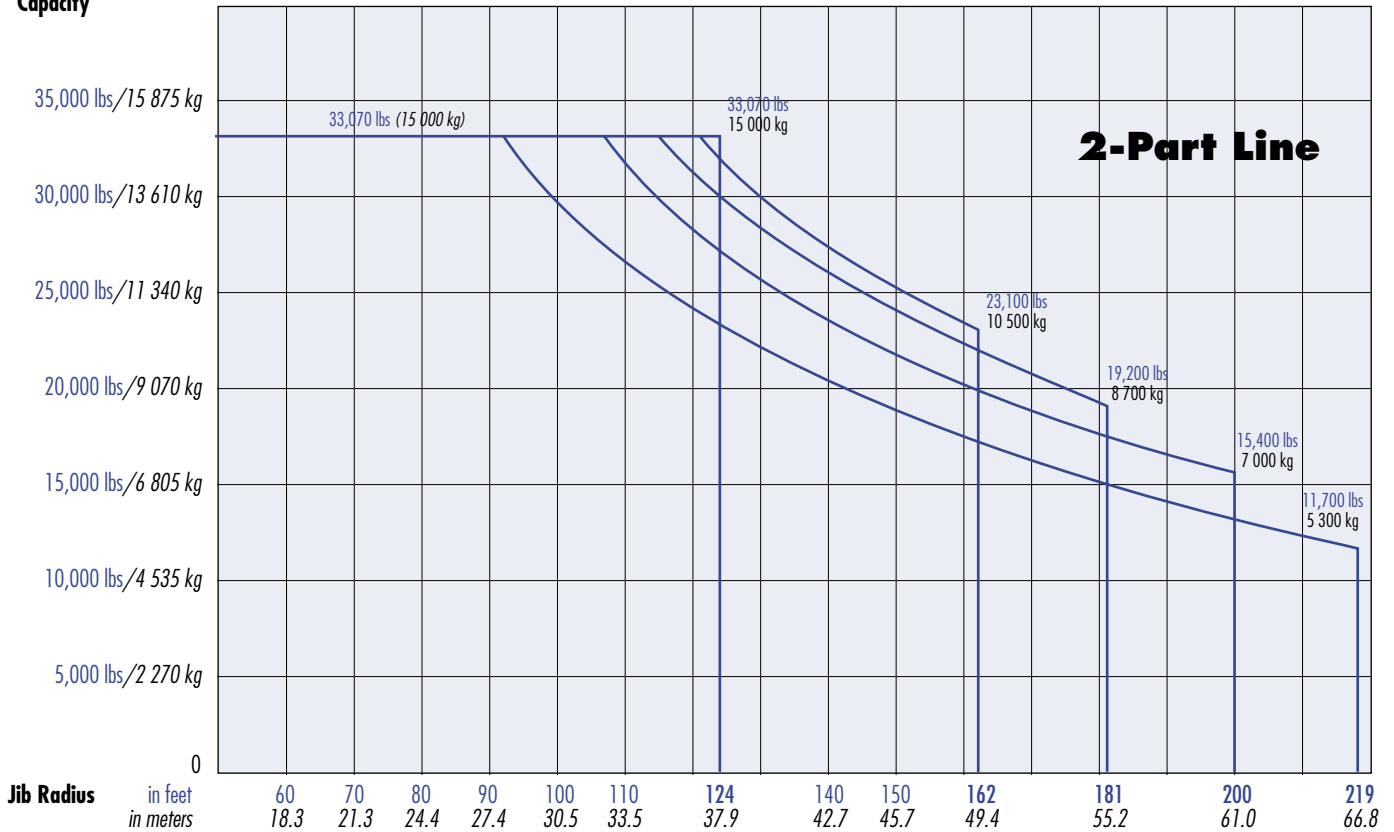
Peiner Tower Crane Model SK 500-30

IMPORTANT: This data applies only to crane with serial number #0101

2-Part Line

| Hook Radius | Maximum Capacity – Radius | ft | 98 | 108 | 118.8 | 124 | 130 | 135 | 140 | 145 | 150 | 155 | 162 | 170 | 181 | 190 | 200 | 210 | 219 | |
|-----------------|--|-----------|------------------|------------------|------------------|------------------|------------------|------------------|------------------|------------------|------------------|------------------|------------------|-----------------|-----------------|-----------------|-----------------|-----------------|-----------------|--|
| | | m | 29.9 | 32.9 | 36.2 | 37.9 | 39.6 | 41.1 | 42.7 | 44.2 | 45.7 | 47.2 | 49.4 | 51.8 | 55.2 | 57.9 | 61.0 | 64.0 | 66.8 | |
| 219 ft 66.8m | 33,070 lbs – 93 ft 15 000 kg – 28.2m | lbs kg | 30,900 14 000 | 27,600 12 500 | 24,700 11 200 | 23,400 10 600 | 22,200 10 100 | 21,300 9 700 | 20,400 9 300 | 19,500 8 800 | 18,700 8 500 | 18,000 8 200 | 17,100 7 800 | 16,100 7 300 | 14,900 6 800 | 14,000 6 400 | 13,100 5 900 | 12,400 5 600 | 11,700 5 300 | |
| 200 ft 61.0m | 33,070 lbs – 105 ft 15 000 kg – 31.9m | lbs kg | 33,070 15 000 | 31,800 14 400 | 28,500 12 900 | 27,100 12 300 | 25,700 11 700 | 24,600 11 200 | 23,600 10 700 | 22,600 10 300 | 21,800 9 900 | 20,900 9 500 | 19,900 9 000 | 18,800 8 500 | 17,400 7 900 | 16,400 7 400 | 15,400 7 000 | | | |
| 181 ft 55.2m | 33,070 lbs – 114 ft 15 000 kg – 34.6m | lbs kg | 33,070 15 000 | 33,070 15 000 | 31,300 14 200 | 29,800 13 500 | 28,300 12 800 | 27,100 12 300 | 25,900 11 700 | 24,900 11 300 | 24,000 10 900 | 23,100 10 500 | 21,900 9 900 | 20,700 9 400 | 19,200 8 700 | | | | | |
| 162 ft 49.4m | 33,070 lbs – 119 ft 15 000 kg – 36.2m | lbs kg | 33,070 15 000 | 33,070 15 000 | 33,070 15 000 | 31 300 14 200 | 29,800 13 500 | 28,500 12 900 | 27,400 12 400 | 26,300 11 900 | 25,300 11 500 | 24,300 11 000 | 23,100 10 500 | | | | | | | |
| 124 ft 37.9m | 33,070 lbs – 124 ft 15 000 kg – 37.9m | lbs kg | 33,070 15 000 | 33,070 15 000 | 33,070 15 000 | 33,070 15 000 | | | | | | | | | | | | | | |

Capacity



Radius and Capacities

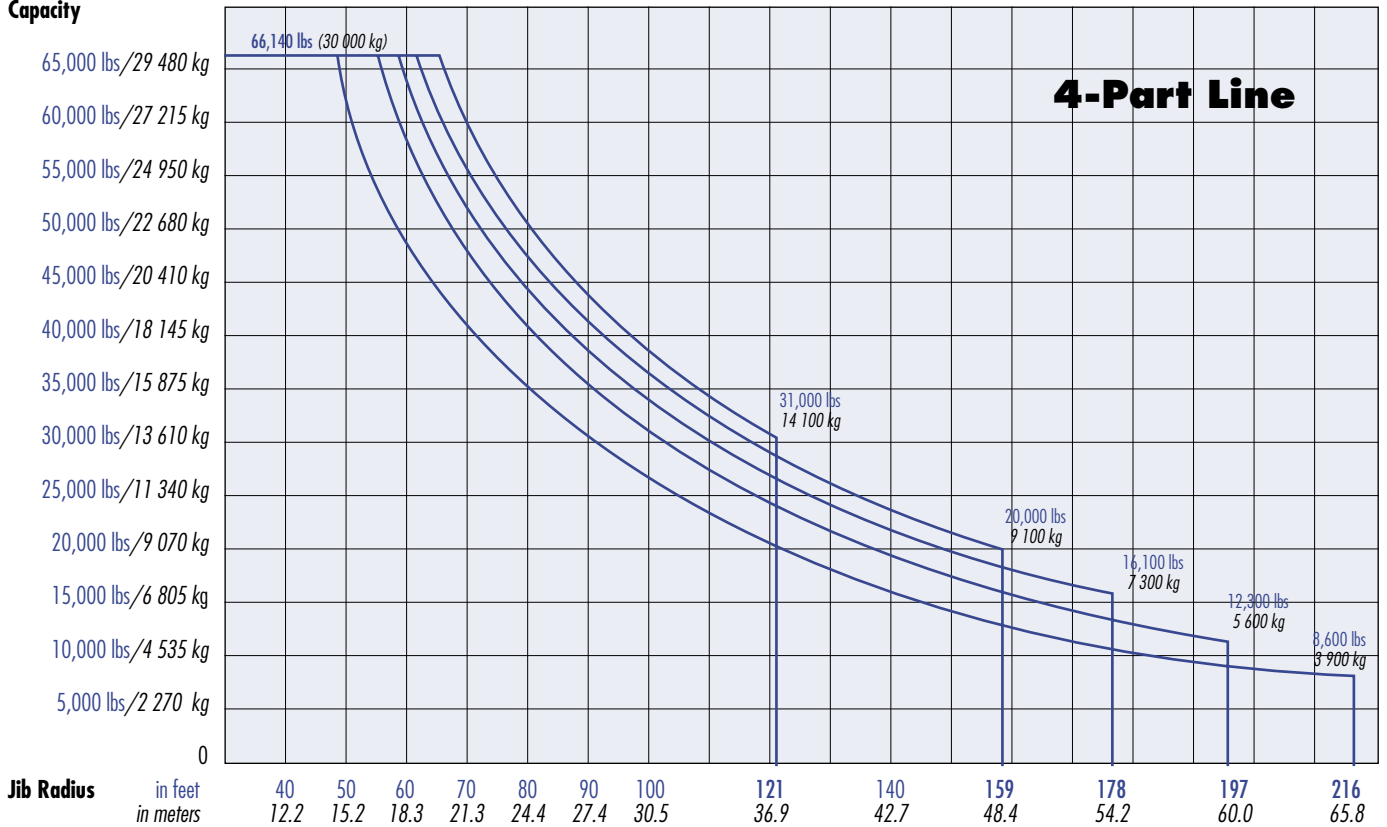
Peiner Tower Crane Model SK 500-30

IMPORTANT: This data applies only to crane with serial number #0101

4-Part Line

| Hook Radius | Maximum Max Capacity – Radius | ft m | 60.4 | 70 | 80 | 90 | 100 | 110 | 121 | 130 | 140 | 150 | 159 | 170 | 178 | 185 | 197 | 205 | 216 | |
|-----------------|---|-----------|------------------|------------------|------------------|------------------|------------------|------------------|------------------|------------------|------------------|-----------------|-----------------|-----------------|-----------------|-----------------|-----------------|----------------|----------------|--|
| | | | 18.4 | 21.3 | 24.4 | 27.4 | 30.5 | 33.5 | 36.9 | 39.6 | 42.7 | 45.7 | 48.4 | 51.8 | 54.2 | 56.4 | 60.0 | 62.5 | 65.8 | |
| 216 ft 65.8m | 66,140 lbs – 48 ft 30 000 kg – 14.6m | lbs kg | 49,600 22 500 | 41,500 18 800 | 35,300 16 000 | 30,400 13 800 | 26,600 12 100 | 23,500 10 700 | 20,700 9 400 | 18,700 8 500 | 16,900 7 700 | 15,300 6 900 | 14,100 6 400 | 12,700 5 800 | 11,900 5 400 | 11,100 5 000 | 10,100 4 600 | 9,400 4 300 | 8,600 3 900 | |
| 197 ft 60.0m | 66,140 lbs – 54 ft 30 000 kg – 16.4m | lbs kg | 57,300 26 000 | 48,000 21 800 | 40,800 18 500 | 35,300 16 000 | 31,000 14 100 | 27,500 12 500 | 24,300 11 000 | 22,100 10 000 | 20,000 9 100 | 18,200 8 300 | 16,900 7 700 | 15,300 6 900 | 14,300 6 500 | 13,500 6 100 | 12,300 5 600 | | | |
| 178 ft 54.2m | 66,140 lbs – 58 ft 30 000 kg – 17.6m | lbs kg | 63,000 28 600 | 52,700 23 900 | 44,900 20 400 | 38,900 17 600 | 34,200 15 500 | 30,400 13 800 | 27,000 12 300 | 24,600 11 200 | 22,300 10 100 | 20,300 9 200 | 18,800 8 500 | 17,100 7 800 | 16,100 7 300 | | | | | |
| 159 ft 48.4m | 66,140 lbs – 60 ft 30 000 kg – 18.4m | lbs kg | 66,140 30 000 | 55,400 25 100 | 47,200 21 400 | 41,000 18 600 | 36,100 16 400 | 32,100 14 600 | 28,500 12 900 | 26,000 11 800 | 23,600 10 700 | 21,500 9 800 | 20,000 9 100 | | | | | | | |
| 121 ft 36.9m | 66,140 lbs – 64 ft 30 000 kg – 19.6m | lbs kg | 66,140 30 000 | 59 900 27 200 | 51,100 23 200 | 44,400 20 100 | 39,100 17 700 | 34,800 15 800 | 31,000 14 100 | | | | | | | | | | | |

Capacity



SPECIFICATIONS

Peiner Tower Crane Model SK 500-30

IMPORTANT: This data applies only to crane with serial number #0101

Hoist Speed and Capacity

| Hoist Unit | 2-Part Line | | | | |
|---|-------------|------------|------------|-----------|-------------|
| | Gear | Capacity | Line Speed | Capacity | Line Speed |
| 165 hp (122 kW) AC hoist unit 4-speed gearbox Remote-controlled gear shifting Eddy current brake 2P280 4P140 | 1 | 33,070 lbs | @ 125 fpm | 15 000 kg | @ 38 m/min |
| | 2 | 19,840 lbs | @ 197 fpm | 9 000 kg | @ 60 m/min |
| | 3 | 12,125 lbs | @ 315 fpm | 5 500 kg | @ 96 m/min |
| | 4 | 6,615 lbs | @ 492 fpm | 3 000 kg | @ 150 m/min |
| | 4-Part Line | | | | |
| | 1 | 66,140 lbs | @ 62 fpm | 30 000 kg | @ 19 m/min |
| | 2 | 39,680 lbs | @ 98 fpm | 18 000 kg | @ 30 m/min |
| | 3 | 24,250 lbs | @ 157 fpm | 11 000 kg | @ 48 m/min |
| | 4 | 13,230 lbs | @ 246 fpm | 6 000 kg | @ 75 m/min |

IMPORTANT! Capacities and line speeds indicated will vary depending on the amount of hoist rope installed. This crane model may be equipped with a hoist unit other than that specified in the data above. To verify, check the serial number of the crane and refer to the SK 500-0101 Operation Manual for additional information.

Motor Information

| Drive Unit | Horsepower | Kilowatts | Speed | |
|-----------------------|------------|-----------|--------------|---------------|
| Trolley (2-part line) | 12 hp | 9 kW | max. 320 fpm | max. 96 m/min |
| Trolley (4-part line) | 12 hp | 9 kW | max. 160 fpm | max. 48 m/min |
| Swing | 2 x 12 hp | 2 x 9 kW | 1.0 rpm | |

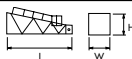
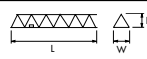
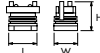
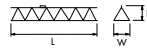
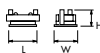
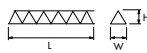

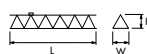

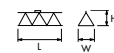

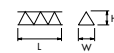
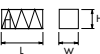
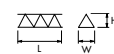
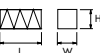


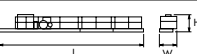
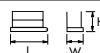
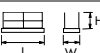
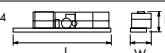

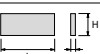
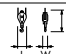
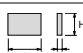
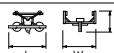
Power Requirements

480 V — 3-phase — 60 Hz — 300 Amperes service

Specifications subject to change without notice. For other configurations and specifications, contact Morrow Equipment.

Component List

Peiner SK 500-30

| Description | Dimensions L x W x H | Weight | Description | Dimensions L x W x H | Weight |
|---|---|-------------------------|---|---|------------------------|
| Tower Top |  29'-11" x 7'-3" x 8'-11" 9.12m x 2.2m x 2.72m | 8,600 lbs 3 900 kg | Jib Section ① with trolley drive |  38'-8" x 6'-2" x 6'-10" 11.8m x 1.88m x 2.09m | 7,275 lbs 3 300 kg |
| Turntable (Complete) Upper & Lower Part |  10'-7" x 10'-1" x 12'-3" 3.23m x 3.08m x 3.73m | 29,100 lbs 13 200 kg | Jib Section ② |  38'-8" x 6'-2" x 6'-3" 11.8m x 1.88m x 1.91m | 6,615 lbs 3 000 kg |
| Turntable Upper Part ¹ |  10'-7" x 7'-5" x 7'-1" 3.23m x 2.25m x 2.16m | 13,970 lbs 6 335 kg | Jib Section ③ |  38'-8" x 6'-2" x 6'-1" 11.8m x 1.88m x 1.85m | 4,190 lbs 1 900 kg |
| Turntable Lower Part ² |  8'-8" x 10'-1" x 5'-2" 2.65m x 3.08m x 1.57m | 15,130 lbs 6 865 kg | Jib Section ④ |  38'-8" x 6'-2" x 6'-1" 11.8m x 1.88m x 1.85m | 4,190 lbs 1 900 kg |
| Operator's Cab |  5'-7" x 3'-11" x 8'-6" 1.7m x 1.2m x 2.6m | 900 lbs 410 kg | Jib Section ⑤ |  20'-0" x 6'-2" x 6'-3" 6.1m x 1.88m x 1.91m | 2,205 lbs 1 000 kg |
| Cab Access Platform |  12'-8" x 5'-7" x 2'-9" 3.85m x 1.7m x 0.85m | 1,000 lbs 455 kg | Jib Section ⑥ |  20'-0" x 6'-2" x 6'-1" 6.1m x 1.88m x 1.85m | 2,205 lbs 1 000 kg |
| Tower Section S35 (TS212) |  19'-5" x 7'-10" x 8'-0" 5.92m x 2.4m x 2.44m | 8,900 lbs 4 040 kg | Jib Section ⑦ |  20'-0" x 6'-2" x 6'-1" 6.1m x 1.88m x 1.85m | 1,545 lbs 700 kg |
| Transition Section S60 to S35 |  19'-5" x 7'-11" x 7'-11" 5.92m x 2.41m x 2.41m | 9,920 lbs 4 500 kg | Jib Section ⑧ |  13'-1" x 6'-2" x 7'-1" 4m x 1.88m x 2.15m | 1,390 lbs 630 kg |
| Tower Section S60 (TS213) |  19'-5" x 7'-11" x 7'-11" 5.92m x 2.41m x 2.41m | 9,920 lbs 4 500 kg | Jib Assembly Part 1 ⁶ for Jibs 124-ft to 219-ft | ①② 76'-9" x 6'-2" x 6'-10" 23.4m x 1.88m x 2.09m | 21,600 lbs 9 800 kg |
| Counterjib ³ (Complete) |  70'-6" x 9'-6" x 8'-4" 21.5m x 2.9m x 2.55m | 31,325 lbs 14 210 kg | Jib Assembly Part 2 ⁷ 219-ft (66.8m) | ③④⑤⑥⑦⑧ 146'-8" x 6'-2" x 6'-3" 44.7m x 1.88m x 1.91m | 19,115 lbs 8 670 kg |
| Counterjib Section #1 (Inner) |  14'-9" x 6'-5" x 5'-3" 4.5m x 1.95m x 1.6m | 2,315 lbs 1 050 kg | Jib Assembly Part 2 ⁷ 200-ft (61.0m) | ③④⑤⑥⑧ 127'-8" x 6'-2" x 6'-1" 38.9m x 1.88m x 1.85m | 17,570 lbs 7 970 kg |
| Counterjib Section #2 (Intermediate) |  18'-1" x 6'-5" x 5'-3" 5.5m x 1.95m x 1.6m | 2,755 lbs 1 250 kg | Jib Assembly Part 2 ⁷ 181-ft (55.2m) | ③④⑤⑧ 108'-7" x 6'-2" x 6'-1" 33.1m x 1.88m x 1.85m | 15,365 lbs 6 970 kg |
| Counterjib Section #3 ⁴ (Outer) |  37'-9" x 9'-6" x 8'-4" 11.5m x 2.9m x 2.55m | 26,255 lbs 11 910 kg | Jib Assembly Part 2 ⁷ 162-ft (49.4m) | ③④⑧ 89'-7" x 6'-2" x 6'-1" 27.3m x 1.88m x 1.85m | 12,645 lbs 5 735 kg |
| Hoist Unit ⁵ 165 hp (122 kW) |  10'-8" x 8'-2" x 4'-7" 3.25m x 2.49m x 1.4m | 15,140 lbs 6 870 kg | Jib Assembly Part 2 ⁷ 124-ft (37.9m) | ③⑧ 51'-6" x 6'-2" x 6'-1" 15.7m x 1.88m x 1.85m | 8,455 lbs 3 835 kg |
| Counterweight Block A |  14'-8" x 7'-5" x 5'-1" 4.47m x 0.19m x 1.55m | 6,800 lbs 3 085 kg | Hook Block |  2'-4" x 1'-6" x 4'-2" 0.7m x 0.45m x 1.25m | 800 lbs 360 kg |
| Counterweight Block B |  9'-5" x 5'-5" x 5'-1" 2.87m x 0.14m x 1.55m | 3,200 lbs 1 450 kg | Trolley (Outer) (2-part operation) |  5'-7" x 7'-1" x 3'-11" 1.7m x 2.16m x 1.2m | 900 lbs 410 kg |

NOTE! Weights and dimensions are approximate. Scale components before lifting. Please consult Operation Manual before erecting, operating, servicing or dismantling crane.

- ¹ Turntable Upper Part includes swing motors and slewing ring. Does not include slewing ring support and support frame.
- ² Turntable Lower Part includes slewing ring support and support frame. Does not include Upper Part, swing motors and slewing ring.
- ³ Counterjib (Complete) include 165 hp (122 kW) hoist unit with frame, counterjib sections 1, 2 and 3, electrical panels and handrails. Does not include wire rope or counter weights.
- ⁴ Counterjib section 3 includes hoist unit with frame, electrical panels and handrails. Does not include wire rope or counterweights.
- ⁵ Includes frame. Does not include wire rope.
- ⁶ Jib Assembly Part 1 includes jib sections 1 and 2, pendant cables, jib A-frame, trolley drive unit, trolley wire rope, 2-part trolley (outer) and hook block. If 4-part application is used, weight increases by 2,730 lbs (1 240 kg) for additional trolley (inner) and hook block.
- ⁷ Jib Assembly Part 2 includes jib sections and pendant cables.



Morrow Equipment

C O M P A N Y, L. L. C.

3218 Pringle Road SE • P O Box 3306 • Salem, Oregon 97302-0306 USA
503 585 5721 • Fax 503 363 1172 • info@morrow.com • www.morrow.com

The American home of
LIEBHERR
TOWER CRANES

Atlanta, GA • Charlotte, NC • Chicago, IL • Denver, CO • Honolulu, HI • Houston, TX • Los Angeles, CA • Las Vegas, NV
Millwood, NY • St. Louis, MO • San Francisco, CA • Seattle, WA • Miami, FL • Tampa, FL • Washington, DC • Sydney, Australia
Wellington, New Zealand • Vancouver, BC, Canada • Toronto, ON, Canada • Mexico City, Mexico • Monterrey, Mexico