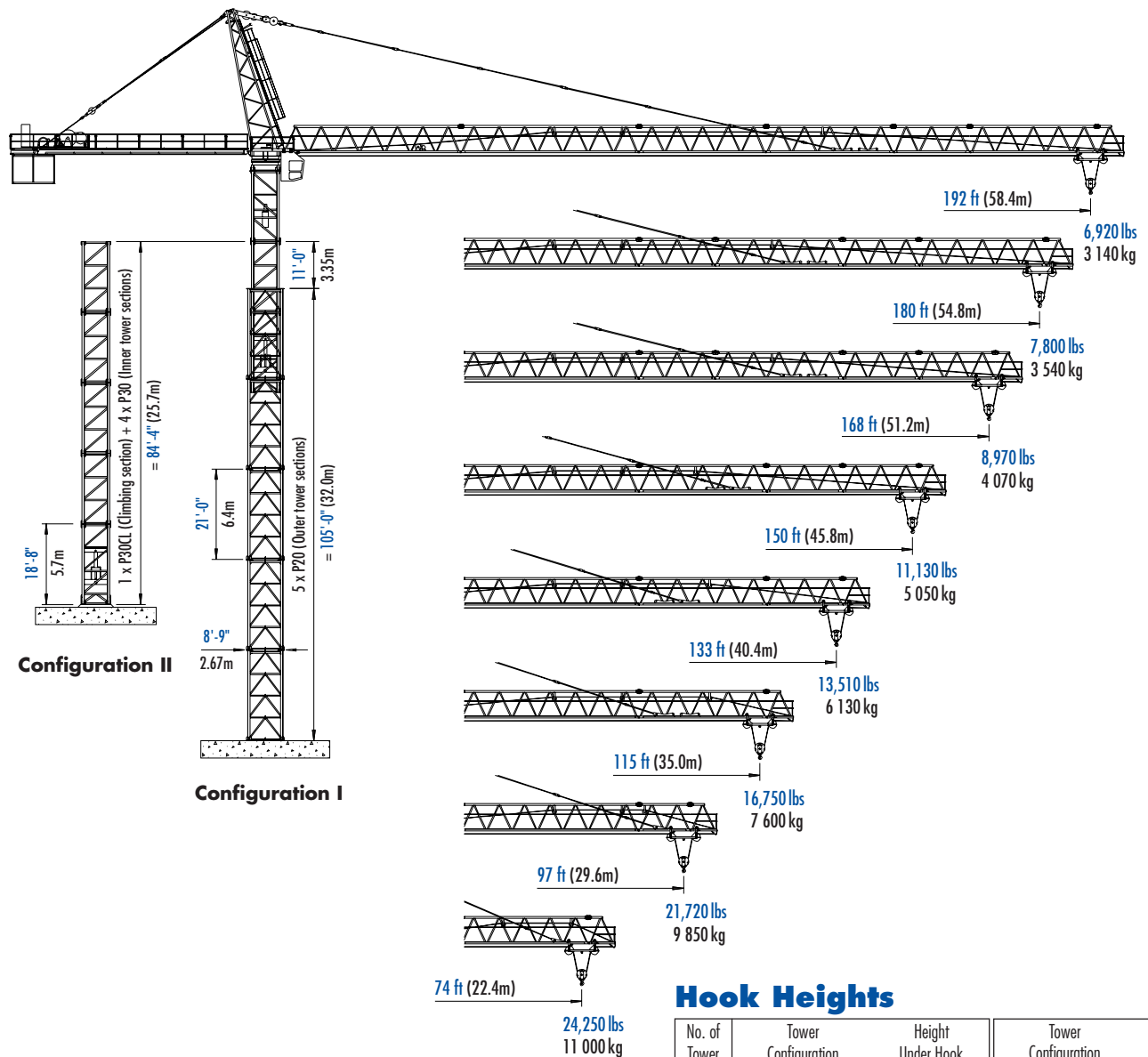


Pecco PC 3000 TOWER CRANE



**STATIONARY
FREESTANDING**

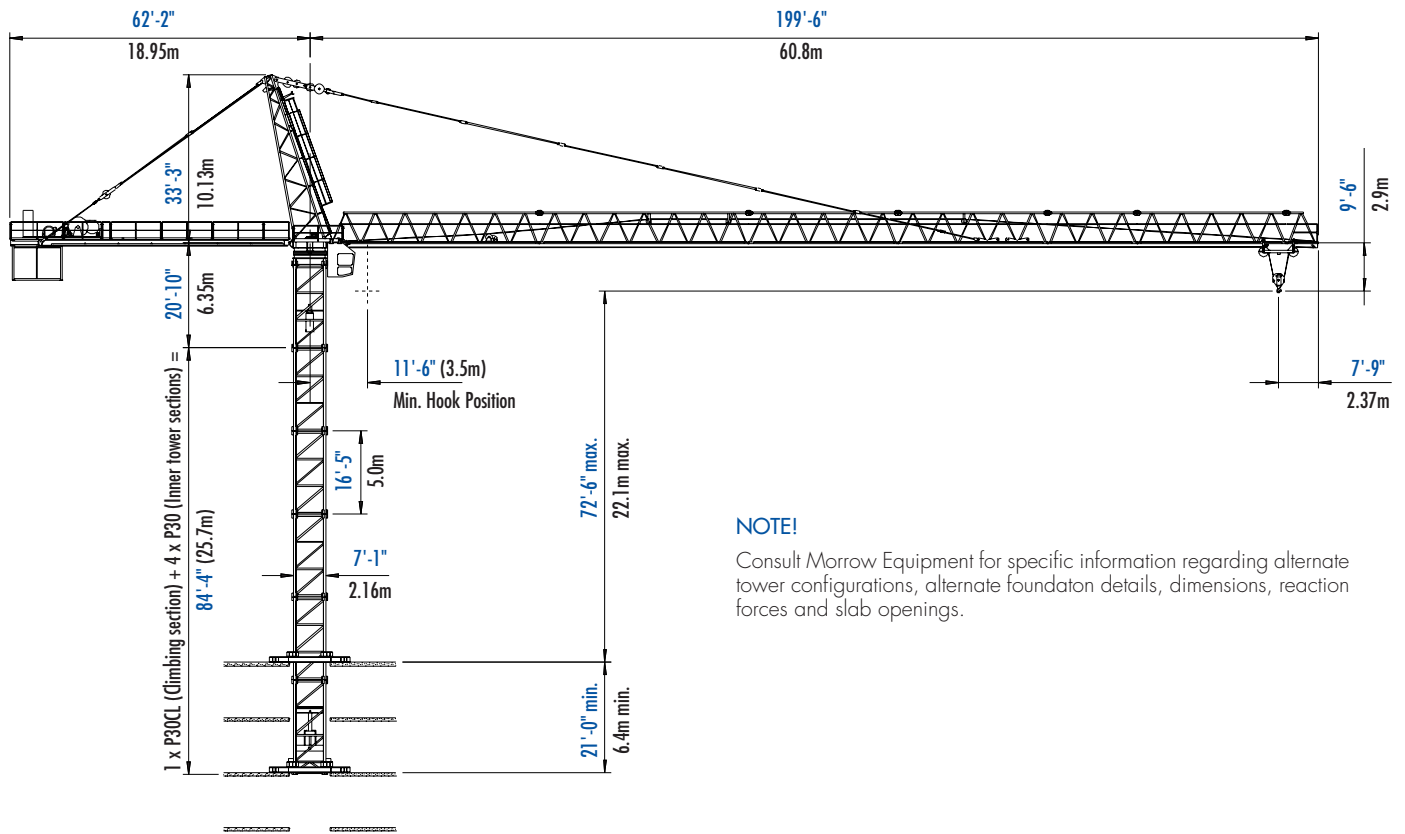
Hook Heights

No. of Tower Sections	Tower Configuration I	Height Under Hook		Tower Configuration II	Height Under Hook	
		ft	m		ft	m
1	P20 Outer Tower	—	—	P30CL Climbing	30.0	9.1
2	P20 Outer Tower	64.3	19.6	P30 Inner Tower	46.4	14.1
3	P20 Outer Tower	85.3	26.0	P30 Inner Tower	62.8	19.1
4	P20 Outer Tower	106.3	32.4	P30 Inner Tower	79.2	24.1
5	P20 Outer Tower	127.3	38.9	P30 Inner Tower	95.7	29.1
7	P30CL Climbing	—	—	P3OSR Slipping Tower	—	—
8	P30 Inner Tower	—	—			
9	P3OSR Slipping Tower	—	—			

Other tower combinations are possible. Contact Morrow Equipment for additional information.



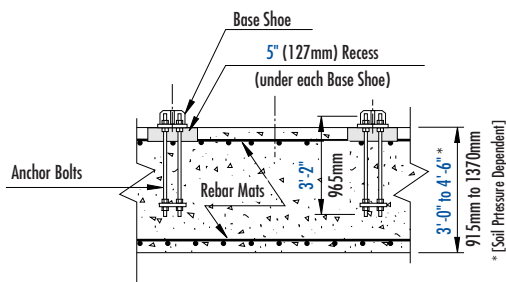
Morrow Equipment



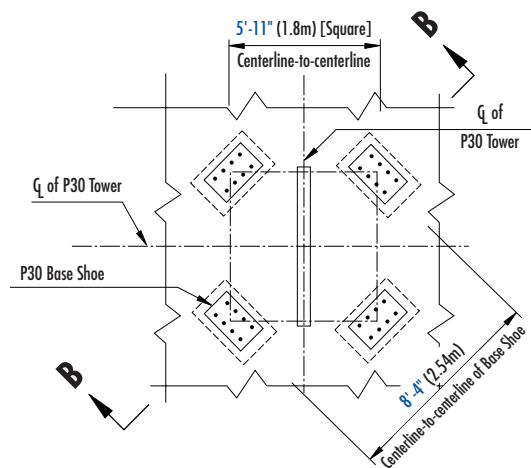
NOTE!

Consult Morrow Equipment for specific information regarding alternate tower configurations, alternate foundation details, dimensions, reaction forces and slab openings.

BOTTOM CLIMBING
with P30 Inner Tower Sections
(Inside Structure)

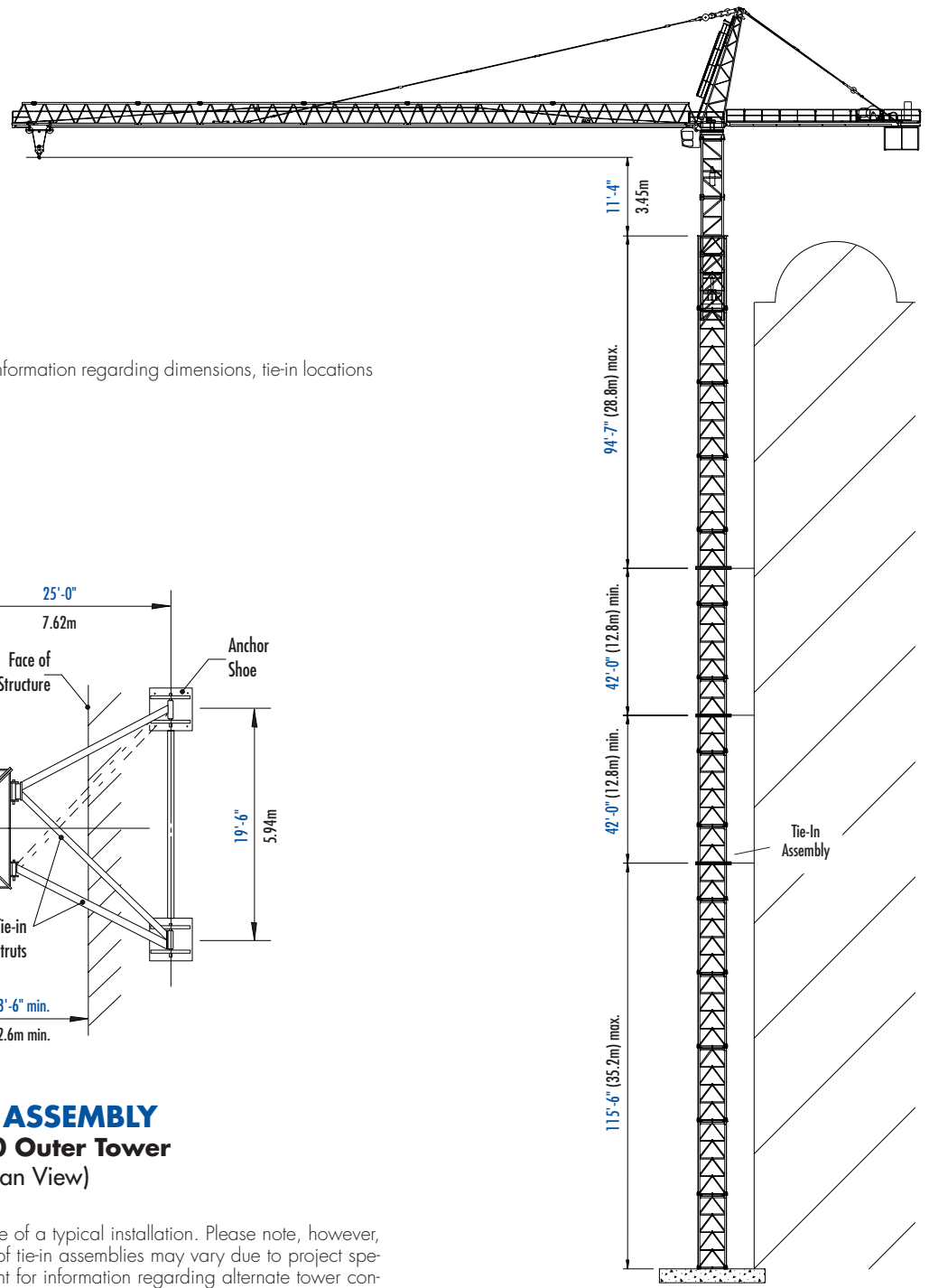


P30 Foundation - Elevation
Section B-B



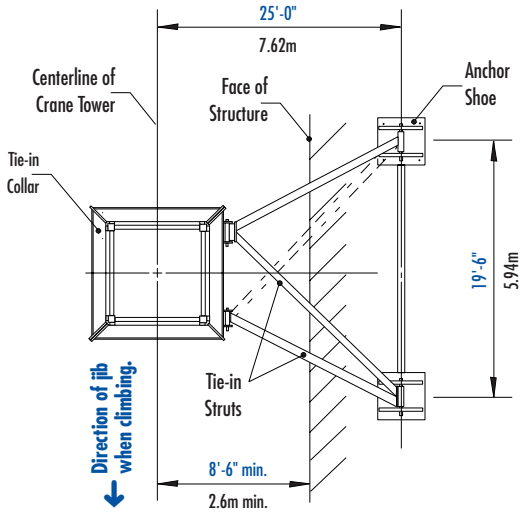
P30 Foundation - Plan

FOUNDATION DETAILS
with P30 Inner Tower
(Concrete Slab)



NOTE!

Consult Morrow Equipment for specific information regarding dimensions, tie-in locations and reaction forces.



TIE-IN ASSEMBLY
with P20 Outer Tower
(Plan View)

NOTE!

The tie-in assembly shown is an example of a typical installation. Please note, however, that factors determining the installation of tie-in assemblies may vary due to project specific criteria. Contact Morrow Equipment for information regarding alternate tower configurations, dimensions, reaction forces and tie-in locations.

TOP CLIMBING
with P30 Inner/P20 Outer
Tower Sections
(Tied to Structure)

Radius and Capacities

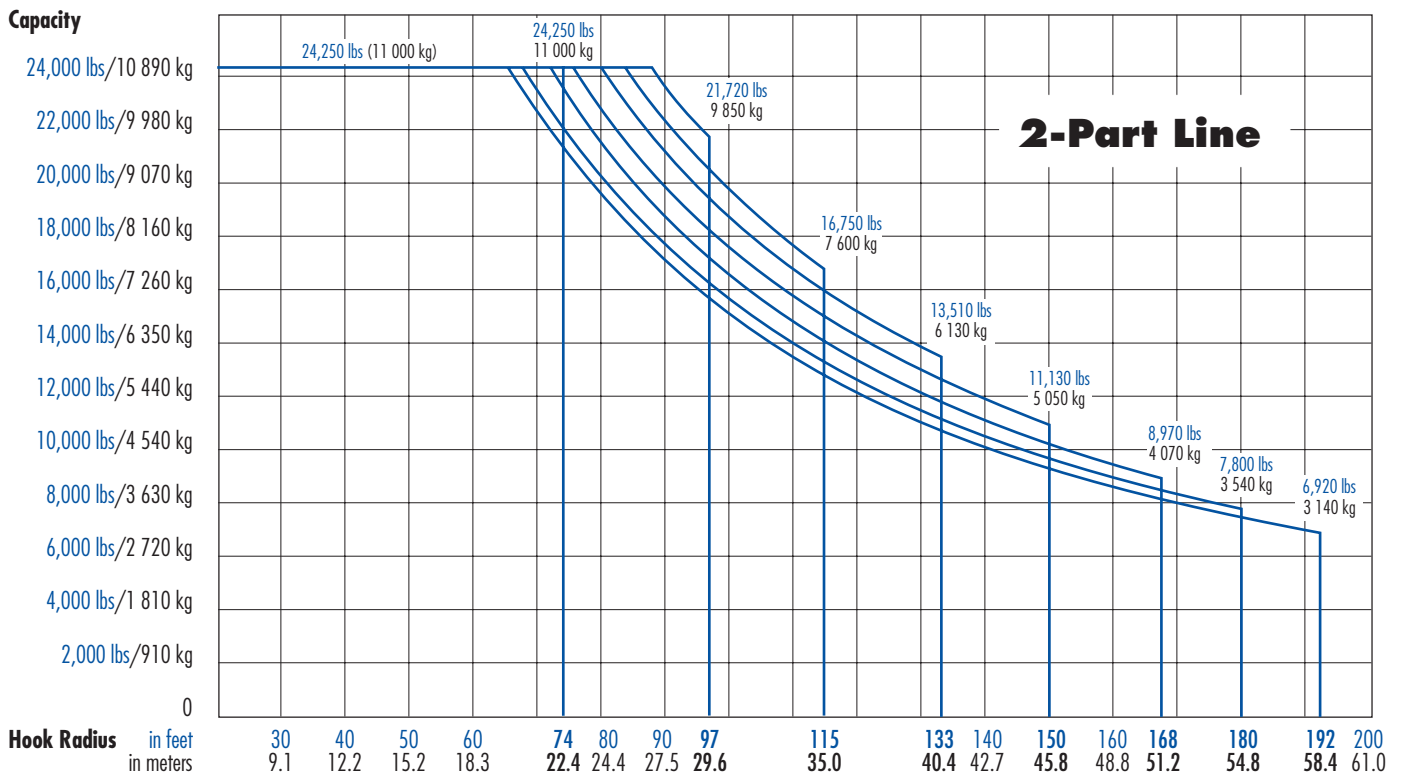
Pecco PC 3000

IMPORTANT: This data applies only to crane with serial number #0207

2-Part Line*

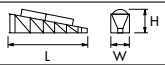
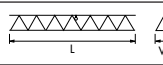

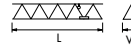

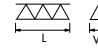
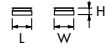
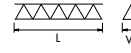

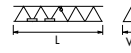


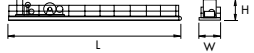
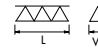
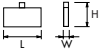
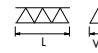
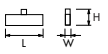
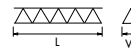
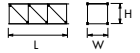
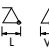
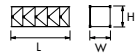
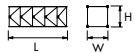
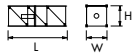


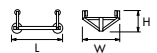
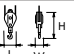
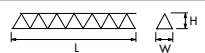
Hook Radius	2-Part Line Max Capacity – Radius	ft m	11.5 3.5	74 22.4	79 24.2	88 26.8	97 29.6	105 32.0	115 35.0	125 38.1	133 40.4	138 42.0	150 45.8	158 48.2	168 51.2	174 53.0	180 54.8	187 57.0	192 58.4	
192 ft 58.4m	24,250 lbs – 66 ft 11 000 kg – 20.2m	lbs kg	24,250 11 000	21,600 9 800	19,800 8 980	17,600 7 980	15,700 7 120	14,310 6 490	12,900 5 850	11,700 5 310	10,900 4 940	10,400 4 720	9,400 4 260	8,800 3 990	8,200 3 720	7,800 3 540	7,230 3 280	7,100 3 220	6,920 3 140	
180 ft 54.8m	24,250 lbs – 68 ft 11 000 kg – 20.8m	lbs kg	24,250 11 000	22,400 10 160	20,500 9 300	18,200 8 260	16,600 7 530	15,300 6 940	13,400 6 080	12,200 5 530	11,300 5 130	10,800 4 900	9,700 4 400	9,200 4 170	8,500 3 860	8,100 3 670	7,800 3 540			
168 ft 51.2m	24,250 lbs – 72 ft 11 000 kg – 21.8m	lbs kg	24,250 11 000	23,500 10 660	21,500 9 750	19,200 8 710	17,100 7 760	15,600 7 080	14,100 6 400	12,800 5 810	11,900 5 400	11,400 5 170	10,300 4 670	9,700 4 400	8,970 4 070					
150 ft 45.8m	24,250 lbs – 76 ft 11 000 kg – 23.3m	lbs kg	24,250 11 000	24,250 11 000	23,200 10 520	20,680 9 380	18,500 8 390	16,900 7 670	15,200 6 900	13,900 6 310	12,900 5 850	12,300 5 580	11,130 5 050							
133 ft 40.4m	24,250 lbs – 80 ft 11 000 kg – 24.4m	lbs kg	24,250 11 000	24,250 11 000	24,250 11 000	21,600 9 800	19,300 8 750	17,700 8 030	16,000 7 260	14,500 6 580	13,510 6 130									
115 ft 35.0m	24,250 lbs – 83 ft 11 000 kg – 25.2m	lbs kg	24,250 11 000	24,250 11 000	24,250 11 000	22,700 10 300	20,300 9 210	18,600 8 440	16,750 7 600											
97 ft 29.6m	24,250 lbs – 88 ft 11 000 kg – 26.8m	lbs kg	24,250 11 000	24,250 11 000	24,250 11 000	24,250 11 000	21,720 9 850													
74 ft 22.4m	24,250 lbs – 74 ft 11 000 kg – 22.4m	lbs kg	24,250 11 000	24,250 11 000																

* 4-part line operation is available. Consult Morrow Equipment for specific information.



Component List

Pecco PC 3000

Description	Dimensions L x W x H	Weight	Description	Dimensions L x W x H	Weight	
Tower Top	 34'-9" x 5'-5" x 6'-7" 10.6m x 1.65m x 2.0m	5,510 lbs 2 500 kg	Jib Section ② (normal)	 42'-0" x 6'-4" x 6'-8" 12.8m x 1.92m x 2.03m	6,010 lbs 2 725 kg	
Turntable (Complete) Upper & Lower Parts	 8'-2" x 7'-0" x 6'-7" 2.5m x 2.13m x 2.0m	15,800 lbs 7 170 kg	Jib Section ② ⁵ (shortened)	 30'-1" x 6'-4" x 6'-8" 9.17m x 1.92m x 2.03m	5,400 lbs 2 450 kg	
Turntable Upper Part ¹	 8'-2" x 7'-0" x 4'-6" 2.5m x 2.13m x 1.37m	8,690 lbs 3 940 kg	Jib Section ③ (normal)	 18'-3" x 6'-4" x 6'-8" 5.57m x 1.92m x 2.03m	2,220 lbs 1 005 kg	
Turntable Lower Part ²	 7'-0" x 7'-0" x 2'-1" 2.13m x 2.13m x 0.64m	7,110 lbs 3 230 kg	Jib Section ③ ^E (extended)	 30'-1" x 6'-4" x 6'-8" 9.17m x 1.92m x 2.03m	3,520 lbs 1 600 kg	
Hoist Unit with Frame ³ (198 hp/147 kW)	 16'-3" x 9'-8" x 6'-6" 4.95m x 2.95m x 1.98m	20,900 lbs 9 480 kg	Jib Section ④ (normal)	 30'-1" x 6'-4" x 6'-8" 9.17m x 1.92m x 2.03m	4,400 lbs 2 000 kg	
Operator's Cab with access platform	 6'-1" x 3'-11" x 6'-11" 1.9m x 1.65m x 2.1m	1,650 lbs 750 kg	Jib Section ④ ⁵ (shortened)	 12'-4" x 6'-4" x 6'-8" 3.77m x 1.92m x 2.03m	1,850 lbs 840 kg	
Counterjib ⁴	 56'-1" x 11'-10" x 7'-4" 17.1m x 3.6m x 2.23m	28,170 lbs 12 775 kg	Jib Section ⑤	 18'-3" x 6'-4" x 6'-8" 5.57m x 1.92m x 2.03m	2,090 lbs 950 kg	
Counterweight Block A	 10'-6" x 8" x 9'-10" 3.2m x 0.2m x 3.0m	7,715 lbs 3 500 kg	Jib Section ⑥ (normal)	 18'-3" x 6'-4" x 6'-8" 5.57m x 1.92m x 2.03m	2,090 lbs 950 kg	
Counterweight Block B	 10'-6" x 8" x 6'-7" 3.2m x 0.2m x 2.0m	4,190 lbs 1 900 kg	Jib Section ⑥ ^E (extended)	 30'-1" x 6'-4" x 6'-8" 9.17m x 1.92m x 2.03m	3,170 lbs 1 440 kg	
Tower Section P30 (Inner)	 16'-7" x 7'-1" x 7'-1" 5.05m x 2.15m x 2.15m	6,000 lbs 2 720 kg	Jib Section ⑦	 6'-7" x 6'-4" x 7'-7" 2.0m x 1.92m x 2.3m	1,045 lbs 475 kg	
Tower Section P30 (Outer)	 21'-2" x 8'-9" x 8'-9" 6.45m x 2.67m x 2.67m	12 570 lbs 5 700 kg	Jib Assembly ⁵ 192-ft (58.4m)	① ② ③ ^E ④ ⑤ ⑥ ^E ⑦	194'-10" x 6'-4" x 7'-9" 59.4m x 1.92m x 2.35m	33,205 lbs 15 060 kg
Tower Section P20 (Outer)	 21'-2" x 8'-9" x 8'-9" 6.45m x 2.67m x 2.67m	8,820 lbs 4 000 kg	Jib Assembly ⁵ 180-ft (54.8m)	① ② ③ ④ ⑤ ⑥ ^E ⑦	183'-1" x 6'-4" x 7'-9" 55.8m x 1.92m x 2.35m	31,905 lbs 14 470 kg
Slipping Tower Section P30SR	 16'-7" x 7'-1" x 7'-1" 5.05m x 2.15m x 2.15m	6,570 lbs 2 980 kg	Jib Assembly ⁵ 168-ft (51.2m)	① ② ③ ④ ⑤ ⑥ ⑦	171'-2" x 6'-4" x 7'-9" 52.2m x 1.92m x 2.35m	30,825 lbs 13 980 kg
Climbing Section P30CL	 18'-10" x 7'-1" x 7'-1" 5.75m x 2.15m x 2.15m	14,550 lbs 6 600 kg	Jib Assembly ⁵ 150-ft (45.8m)	① ② ④ ⑤ ⑥ ⑦	153'-6" x 6'-4" x 7'-9" 46.8m x 1.92m x 2.35m	28,605 lbs 12 975 kg
Tie-in Collar P20 (Outer)	 10'-11" x 2'-0" x 11'-7" 3.33m x 0.61m x 3.53m	5,100 lbs 2 315 kg	Jib Assembly ⁵ 133-ft (40.4m)	① ② ④ ⑥ ⑦	135'-10" x 6'-4" x 7'-9" 41.4m x 1.92m x 2.35m	26,515 lbs 12 030 kg
Trolley	 7'-11" x 7'-5" x 3'-8" 2.41m x 2.26m x 1.12m	1,100 lbs 500 kg	Jib Assembly ⁵ 115-ft (35.0m)	① ② ④ ⑦	118'-1" x 6'-4" x 7'-9" 36.0m x 1.92m x 2.35m	24,425 lbs 11 080 kg
Hook Block	 2'-5" x 1'-1" x 4'-0" 0.73m x 0.33m x 1.22m	730 lbs 330 kg	Jib Assembly ⁵ 97-ft (29.6m)	① ② ④ ⁵ ⑦	100'-5" x 6'-4" x 7'-9" 30.6m x 1.92m x 2.35m	21,875 lbs 9 920 kg
Jib Section ①	 42'-0" x 6'-4" x 7'-9" 12.8m x 1.92m x 2.35m	9,140 lbs 4 145 kg	Jib Assembly ⁵ 74-ft (22.4m)	① ② ⁵ ⑦	76'-10" x 6'-4" x 7'-9" 23.4m x 1.92m x 2.35m	19,415 lbs 8 805 kg

NOTE: Weights and dimensions are approximate. Scale components before lifting.

- ¹ Turntable Upper Part includes swing motors. Does not include slewing ring and slewing ring support.
- ² Turntable Lower Part includes slewing ring and slewing ring support. Does not include Upper Part with swing motors.
- ³ Includes electrical panel. Does not include wire rope.
- ⁴ Includes 198 hp (147 kW) hoist unit, electrical panel, handrails and suspension. Does not include wire rope.
- ⁵ Jib Assemblies include jib sections, pendant bars, trolley drive unit, trolley wire rope, trolley and hook block.



Morrow Equipment
C O M P A N Y, L. L. C.

3218 Pringle Road SE • P O Box 3306 • Salem OR 97302 USA • 503/585 5721 • Fax 503/363 1172



Branch Offices: Atlanta, GA • Chicago, IL • Denver, CO • Honolulu, HI • Houston, TX • Los Angeles, CA • Las Vegas, NV
Millwood, NY • San Francisco, CA • Seattle, WA • Miami, FL • Tampa, FL • Washington, DC • Sydney, Australia
Wellington, New Zealand • Vancouver, BC, Canada • Toronto, ON, Canada • Mexico City, Mexico • Monterrey, Mexico