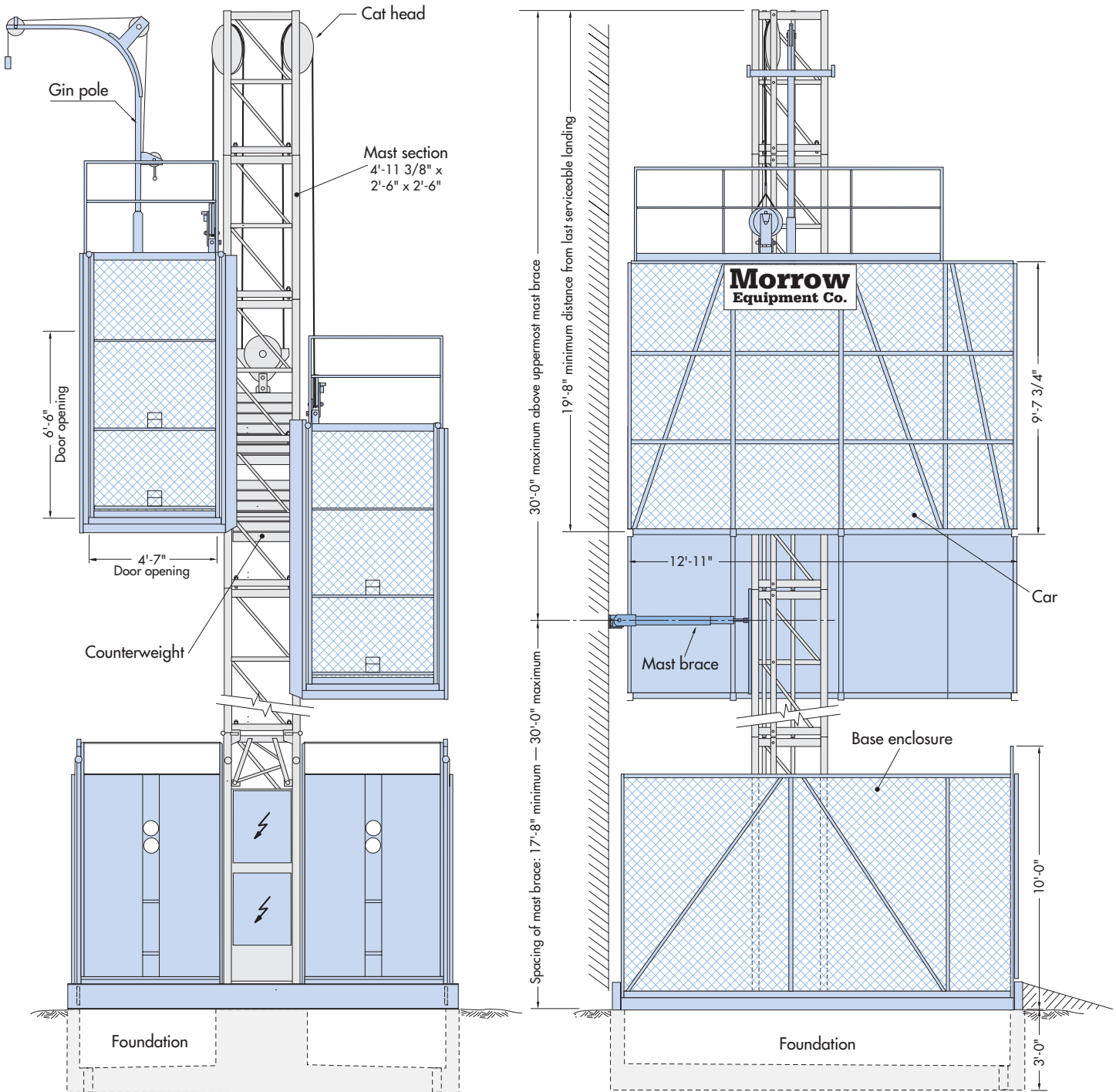


Pecco PH5000-12D

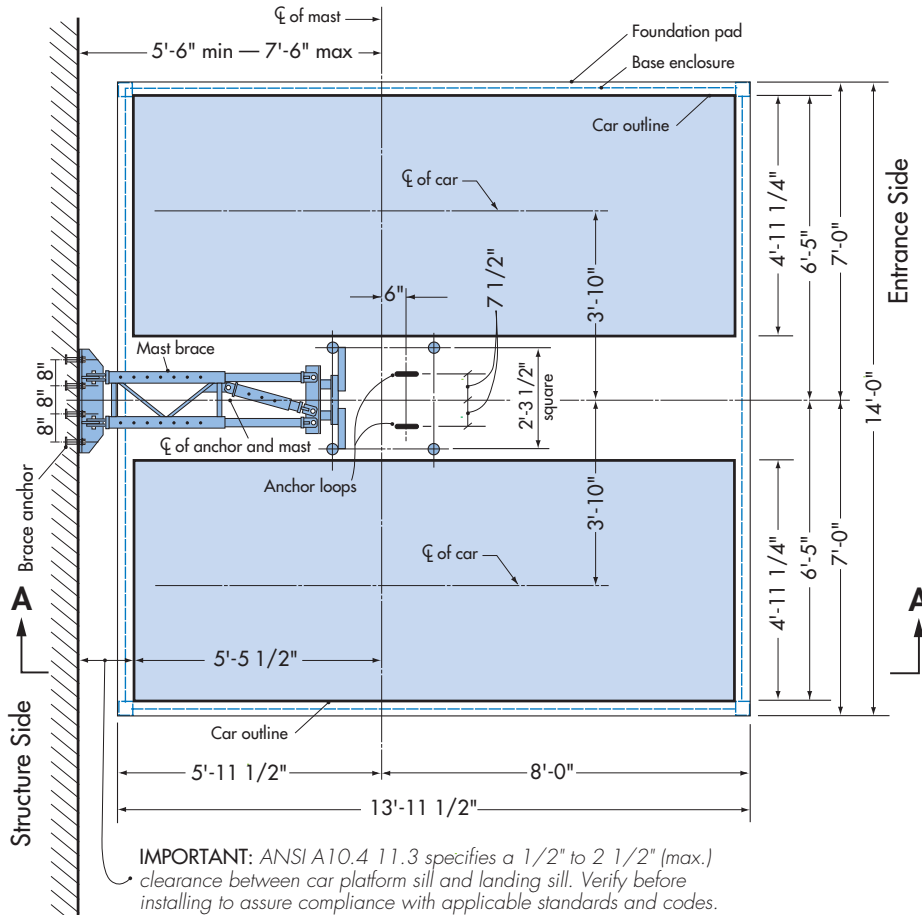
Dual Car Personnel/Material Hoist



Morrow Equipment

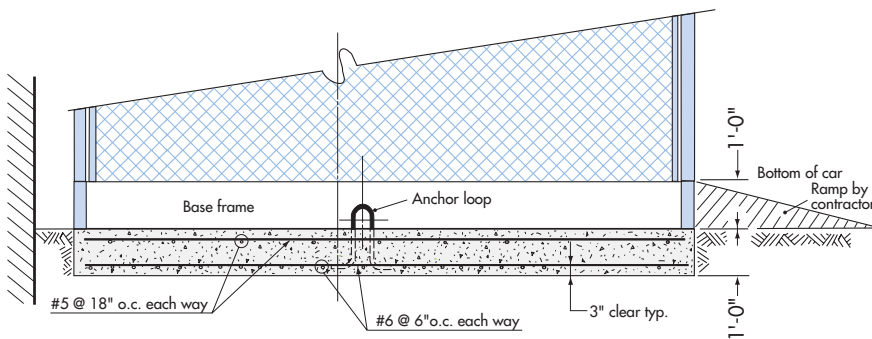
Foundation Details - Slab

PH5000-12D



Plan View - Slab

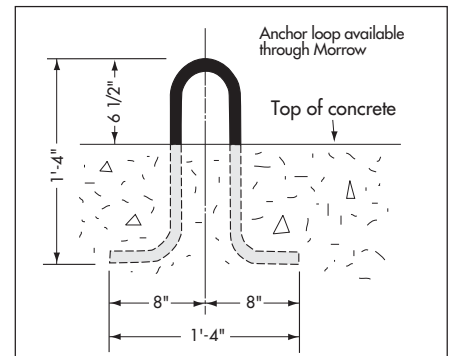
IMPORTANT! Verify that the use of a slab foundation conforms to all applicable federal, state and local standards and codes PRIOR to foundation installation.



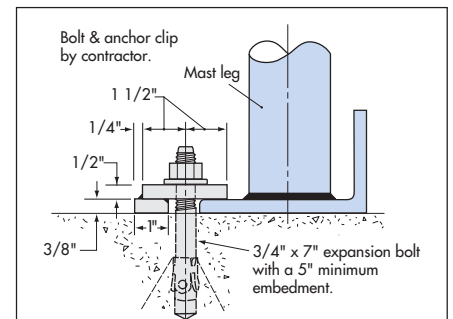
Elevation - Slab (Section A-A)

NOTES:

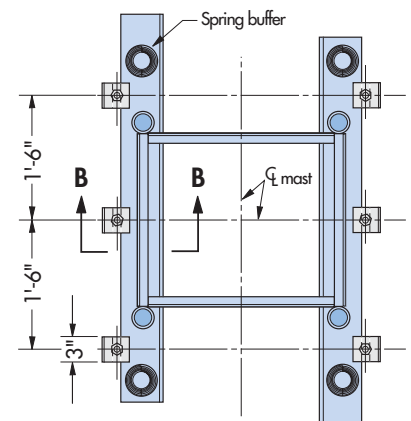
1. Foundation pad: 13'-11 1/2" x 14'-0" x 1'-0" with 3,000 psi concrete.
2. Reinforcing bars: ASTM 615-60.
3. Foundation based on 500-foot mast height. For greater heights, consult Morrow engineering.
4. Foundation pad designed for a minimum soil bearing of 1,000 psf.
5. Be sure to check method of mast brace installation. This may determine the location of the foundation pad.



STANDARD ANCHOR LOOP DETAIL (Slab & Pit)



Elevation (Section B-B)



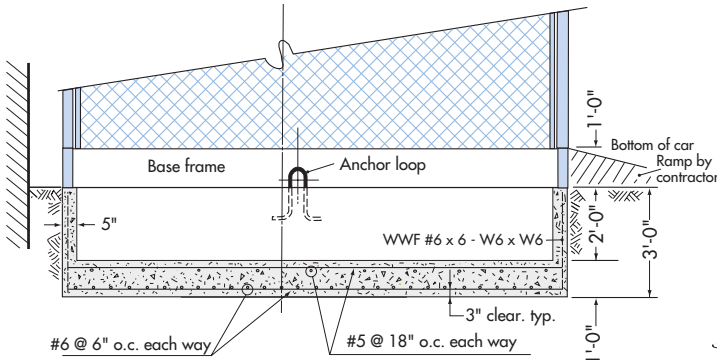
Plan View

ALTERNATE ANCHOR BOLT DETAIL (Slab only)

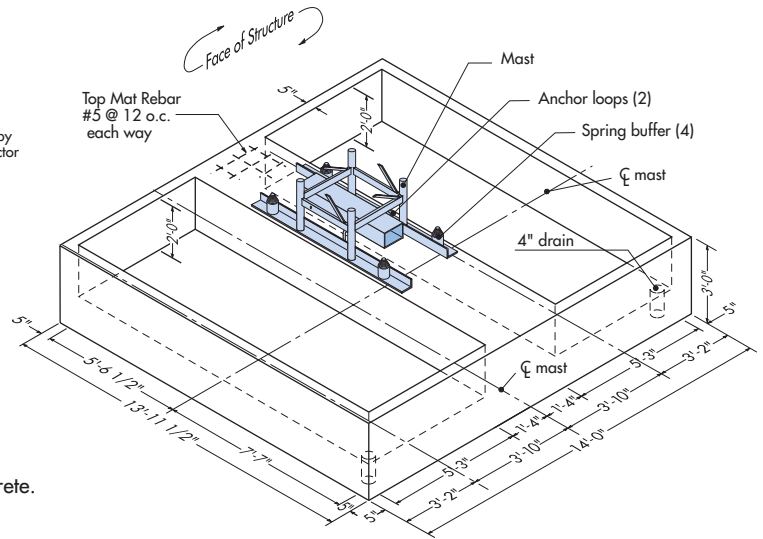
WARNING: When using this anchoring alternative, the car **MUST** remain at ground level until first mast brace is installed. For dismantling, the car **MUST** be at ground level when removing bottom mast brace.

Foundation Details - Pit

PH5000-12D



Elevation - Pit

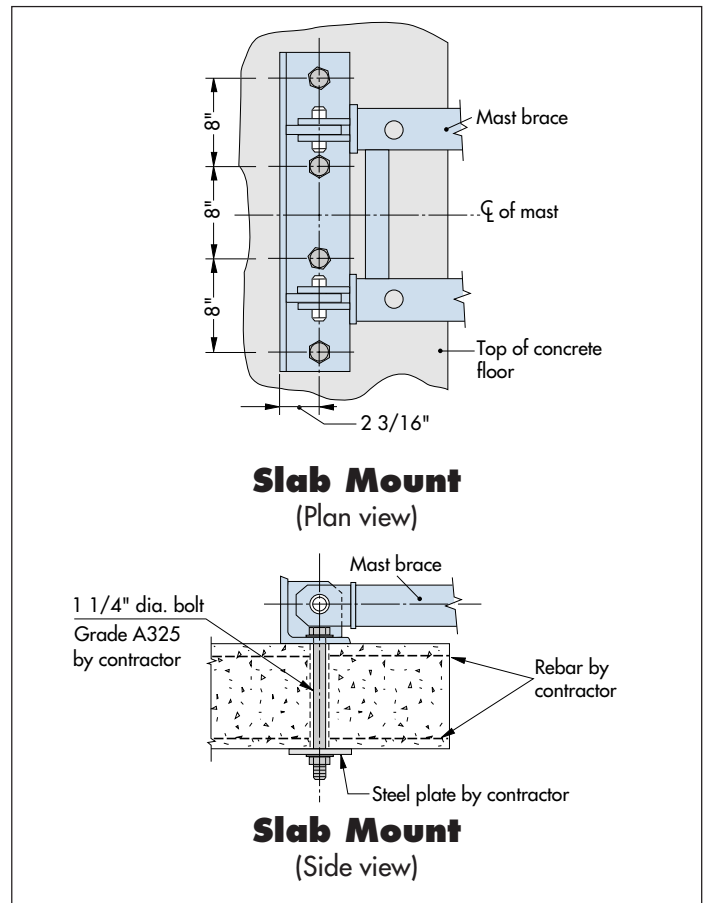
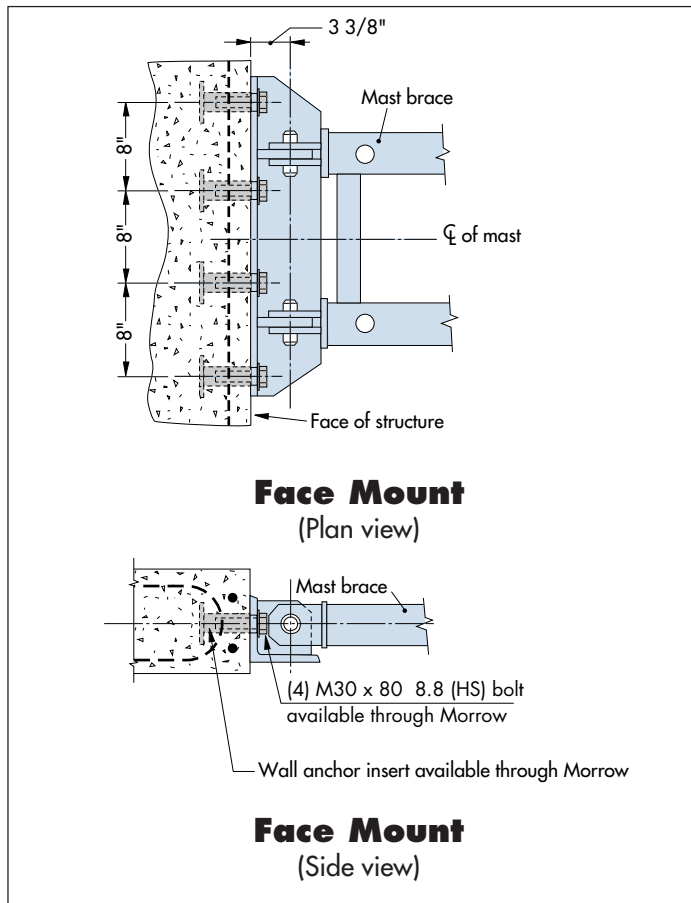


Isometric View - Pit

NOTES:

1. Foundation pad: 13'-11 1/2" x 14'-0" x 3'-0" with 3,000 psi concrete.
2. Pit size: 13'-1 1/2" x 5'-3" x 2'-0" (each).
3. Reinforcing bars: ASTM 615-60.
4. Wire mesh: ASTM A185.
5. Foundation based on 500-foot mast height. For greater heights, consult Morrow engineering.
4. Foundation pad designed for a minimum soil bearing of 1,000 psf.
5. Be sure to check method of mast brace installation. This may determine the location of the foundation pad.

Mast Brace Connections



SPECIFICATIONS

Pecco Personnel and Material Hoist Dual Car Model PH5000-12D

GENERAL

Load capacity	4,800 lbs (each car)	Max. height on standard masts	500'
Number of passengers	24 (each car)	Max. height on reinforced masts	1,000'
Car inside dimensions (approx.) ..	4'-10 1/2" x 12'-6" x 8'-8"	Max. freestanding mast height*	40'-0"
Door opening	4'-7" x 6'-6"	*(Applies to standard anchor loop configuration only.)	
Usable floor area	51.2 sq ft (each car)	Max. mast overhang above top tie-in	30'-0"
Mast section length	4'-11 3/8"	Maximum mast brace spacing	30'-0"
Speed	150 fpm	Minimum mast brace spacing	17'-8"
Motors	2 x 12 hp (each car)	Recommended electrical service	2 x 100 Amps
		Power requirement	480 Volt - 3 phase - 60 Hz

WEIGHTS

Base enclosure	3,650 lbs	Hoist car (each)	4,170 lbs
Counterweight	7,500 lbs	Mast section (standard)	340 lbs

SAFETY FEATURES

- Fail-safe brakes on all hoist motors.
- Heavy-duty overspeed governor which activates safeties that clamp directly onto the mast legs.
- Stop and final limit switches that limit hoist car travel when reaching the end positions.
- Door interlock switches which prevent operation of hoist with doors open.
- Spring buffers.
- All steel car.

INSTALLATION

- Adding mast sections does not require special equipment.
- For instructions regarding the installation and operation of the PH5000-12D dual car hoist, refer to the operation manual.
- Specifications are subject to change without prior notification.
- Drawings are for illustrative purposes only. Do not scale.
- This product must be used in a safe manner. Furthermore, the use of this product and its components must be in conformity with manufacturers' specifications and in compliance with all applicable standards, codes, regulations, etc.
- Hoists may have motors and gears mounted inside the car or above the car.

Please refer to the operation manual when installing, operating or dismantling P/M hoist. For other configurations, contact Morrow Equipment for additional information.



Morrow Equipment C O M P A N Y, L. L. C.

3218 Pringle Road SE • P O Box 3306 • Salem, Oregon 97302-0306 USA
Tel. 503.585.5721 • Fax. 503.363.1172 • www.morrowequipment.com

The American home of
LIEBHERR

Atlanta, GA • Charlotte, NC • Chicago, IL • Denver, CO • Honolulu, HI • Houston, TX • Los Angeles, CA • Las Vegas, NV
Millwood, NY • St. Louis, MO • San Francisco, CA • Seattle, WA • Miami, FL • Tampa, FL • Washington, DC
Sydney, Australia • Wellington, New Zealand • Vancouver, BC, Canada • Toronto, ON, Canada • México DF, México