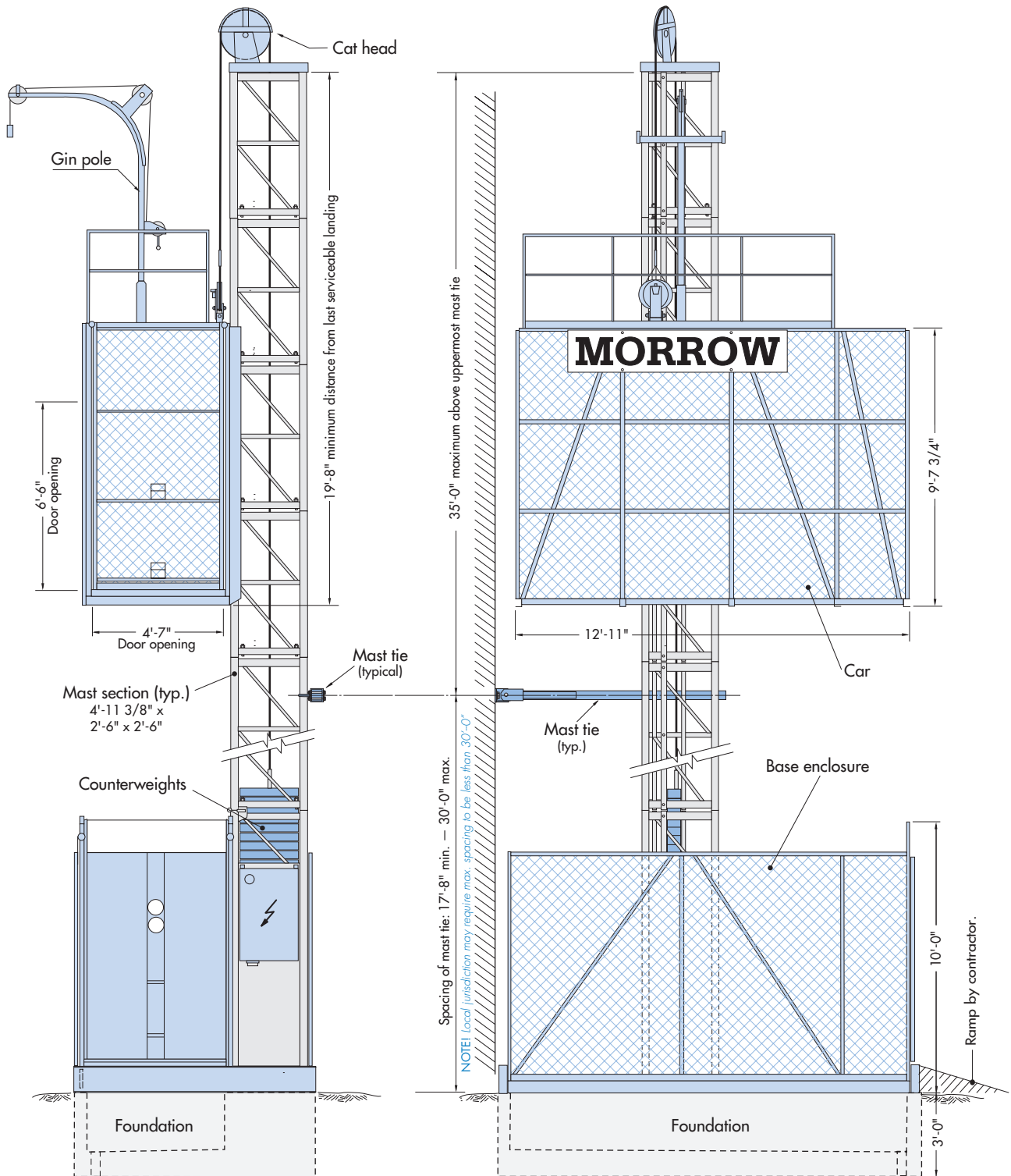


# Pecco PH5000-12

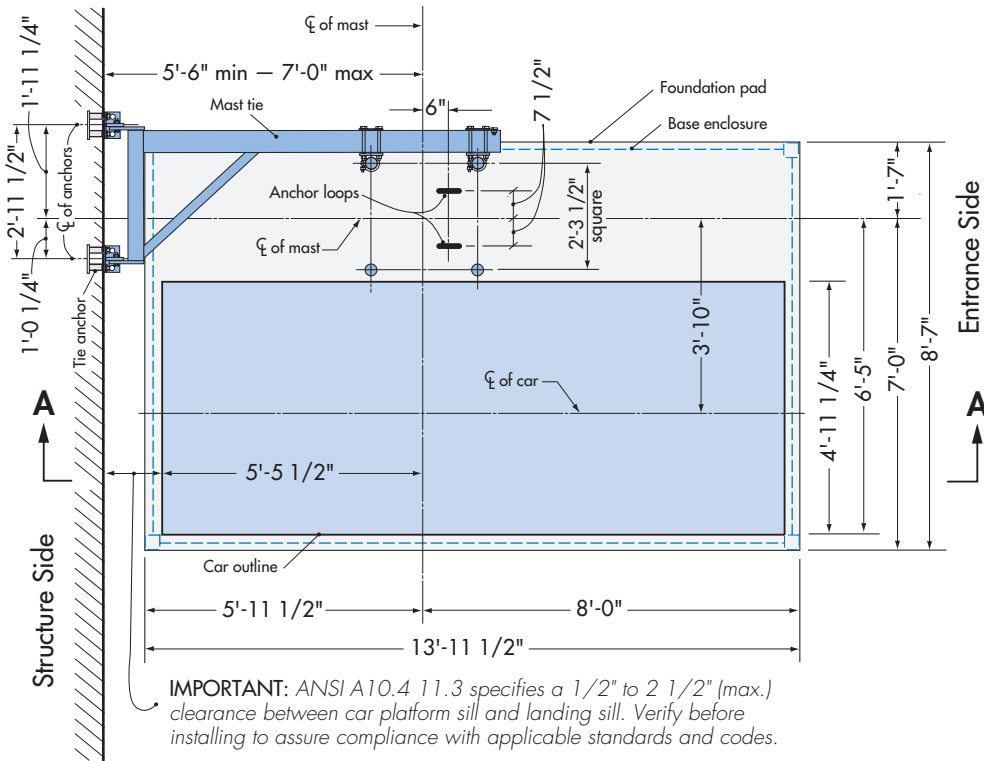
## Single Car Construction Hoist



# Morrow Equipment

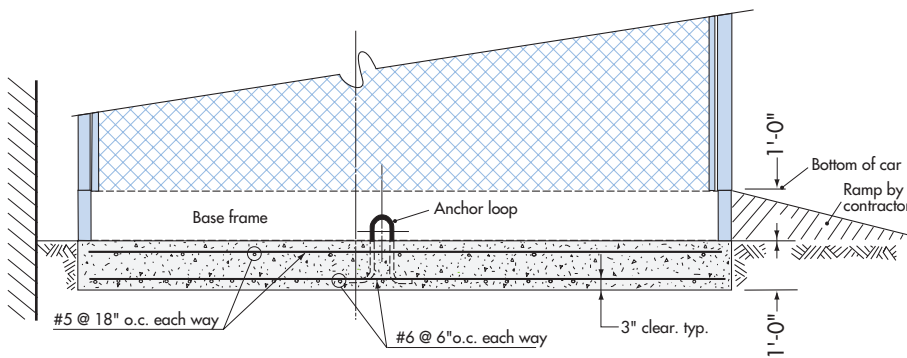
# Foundation Details - Slab

# PH5000-12



**Plan View - Slab**

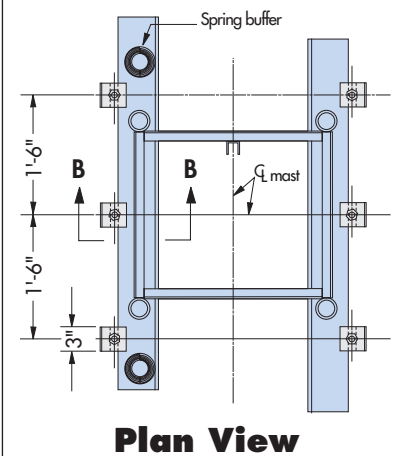
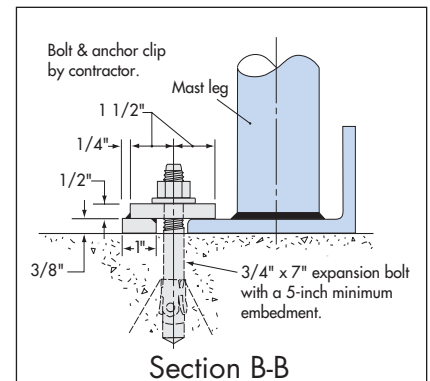
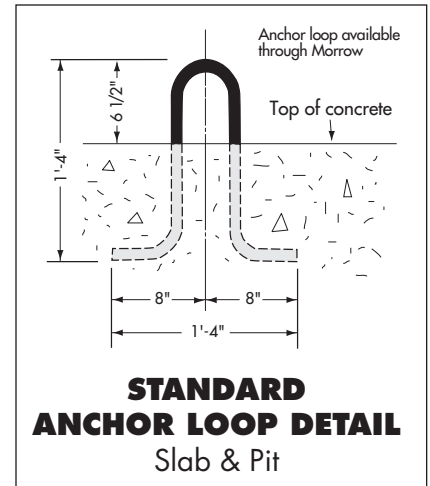
**IMPORTANT!** Verify that the use of a slab foundation conforms to all applicable federal, state and local standards and codes **PRIOR** to installation.



**Section A-A**

## NOTES

1. Foundation pad: 13'-1 11/2" x 8'-7" x 1'-0" with 3,625 psi concrete @ 28 days.
2. Reinforcing bars: ASTM 615-60.
3. Foundation based on 500-foot mast height. For greater heights, consult Morrow engineering.
4. Foundation pad designed for a minimum soil bearing of 1,000 psf.
5. Be sure to check method of mast tie installation. This may determine location of foundation pad.

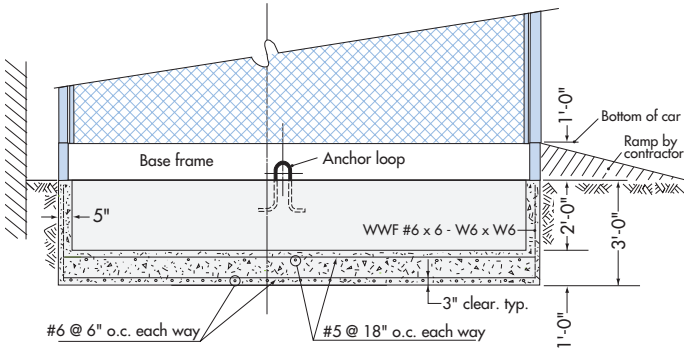


**WARNING:** When using this anchoring alternative, the car **MUST** remain at ground level until first mast tie is installed. For dismantling, the car **MUST** be at ground level when removing bottom mast tie.

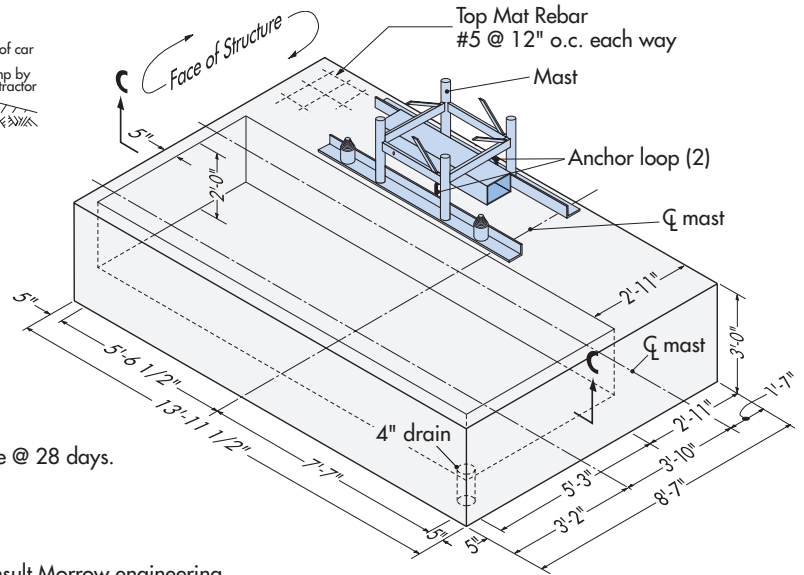
**ALTERNATE ANCHOR BOLT DETAIL**  
Slab only

# Foundation Details - Pit

# PH5000-12



**Elevation - Pit**  
Section C-C

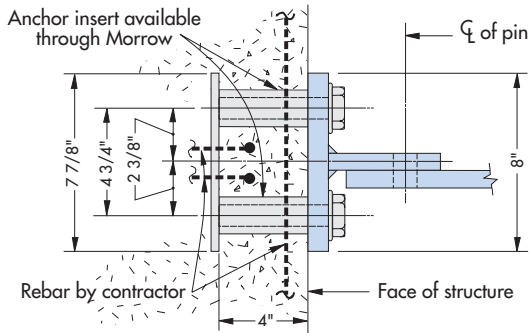


**Isometric View - Pit**

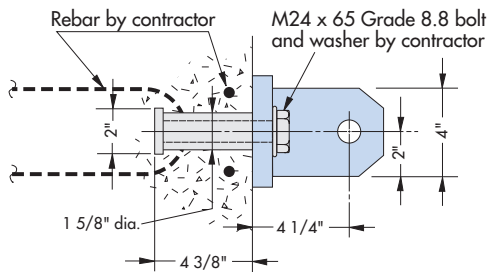
**NOTES**

1. Foundation pad: 13'-1 11/2" x 8'-7" x 3'-0" with 3,625 psi concrete @ 28 days.
2. Pit size: 13'-1 1/2' x 5'-3' x 2'-0".
3. Reinforcing bars: ASTM 615-60.
4. Wire mesh: ASTM A185
5. Foundation based on 500-foot mast height. For greater heights, consult Morrow engineering.
6. Foundation pad designed for a minimum soil bearing of 1,000 psf.
7. Be sure to check method of mast tie installation. This may determine location of foundation pad.

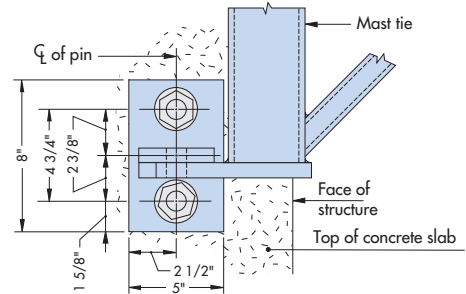
## Mast Tie Connections



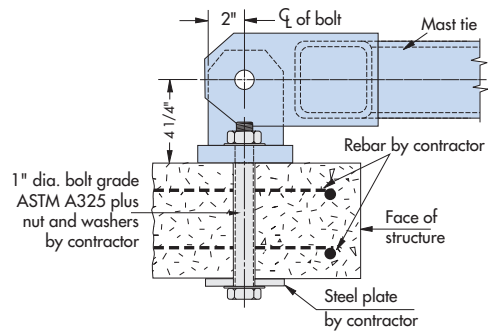
**Face Mounted**  
Plan view



**Face Mounted**  
Elevation



**Slab Mounted**  
Plan View



**Slab Mounted**  
Elevation

# SPECIFICATIONS

## Pecco Construction Hoist Single Car Model PH5000-12

### GENERAL

Load capacity .....	4,800 lbs	Max. height on standard masts.....	500'
Car inside (approx.) .....	4'-10" x 12'-6" x 8'-8"	Max. height on reinforced masts.....	1,000'
Door opening .....	4'-7" x 6'-6"	Max. freestanding mast height* .....	40'-0"
Usable floor area .....	51.2 sq ft	*(Applies to standard anchor loop configuration only.)	
Mast section length.....	4'-11 3/8"	Max. mast overhang above top mast tie .....	35'-0"
Speed .....	150 fpm	Maximum mast tie spacing <sup>1</sup> .....	30'-0"
Motors .....	2 x 12 hp	Minimum mast tie spacing.....	17'-8"
Power requirement.....	480 Volt - 3 phase - 60 Hz	Recommended electrical service.....	100 Amperes

<sup>1</sup> IMPORTANT! Local jurisdiction may require maximum mast tie spacing to be less than 30'-0". Contact Morrow engineering for relevant information.

### WEIGHTS

Base enclosure .....	3,500 lbs	Hoist car .....	4,170 lbs
Counterweight .....	5,300 lbs	Mast section (standard) .....	275 lbs

### SAFETY FEATURES

- Fail-safe brakes on both hoist motors.
- Heavy-duty overspeed governor activates safeties that clamp directly onto mast legs.
- Stop and final limit switches limit hoist car travel when reaching end positions.
- Extra large safety shoes combine maximum braking with minimum wear.
- Door interlock switches prevent operation of hoist with doors open.
- Spring buffers.
- Rugged, all-steel car.

### OTHER FEATURES AND NOTES

- Adding mast sections does not require special equipment. The PH5000-12 is completely self-erecting.
- Drive motors and gears may be mounted inside or atop car.
- For instructions regarding installation and operation of the PH5000-12 single car hoist, refer to operation manual.
- Specifications are subject to change without prior notification.
- Drawings are for illustrative purposes only. Do not scale.
- For other configurations, contact Morrow engineering for information.
- This product must be used in a safe manner. Furthermore, use of this product and its components must be in conformity with manufacturers' specifications and in compliance with all applicable standards, codes, regulations, etc.



## Morrow Equipment

C O M P A N Y, L. L. C.

3218 Pringle Road SE • P O Box 3306 • Salem, Oregon 97302-0306 USA  
503.585.5721 • Fax 503.363.1172 • www.morrow.com • info@morrow.com

The American home of  
**LIEBHERR**  
TOWER CRANES

Atlanta, GA • Myrtle Beach, SC • Chicago, IL • Denver, CO • Honolulu, HI • Houston, TX • Los Angeles, CA • Las Vegas, NV • Millwood, NY  
Milwaukee, WI • St. Louis, MO • San Francisco, CA • Dallas, TX • Seattle, WA • Miami, FL • Pensacola, FL • Tampa, FL • Washington, DC  
Sydney, Australia • Brisbane, Australia • Wellington, New Zealand • Auckland, New Zealand • Vancouver, Canada • Toronto, Canada • Mexico City, Mexico