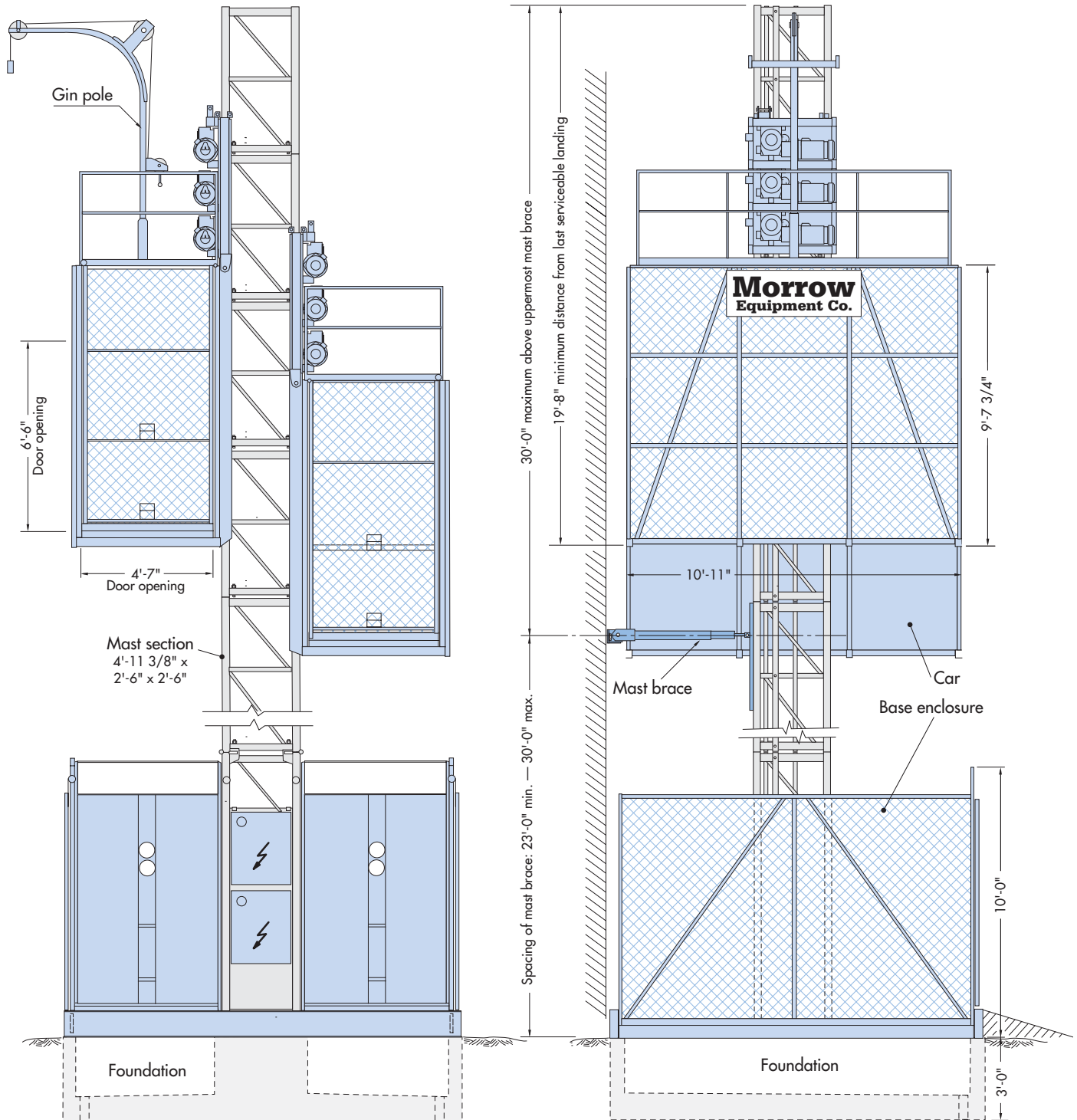


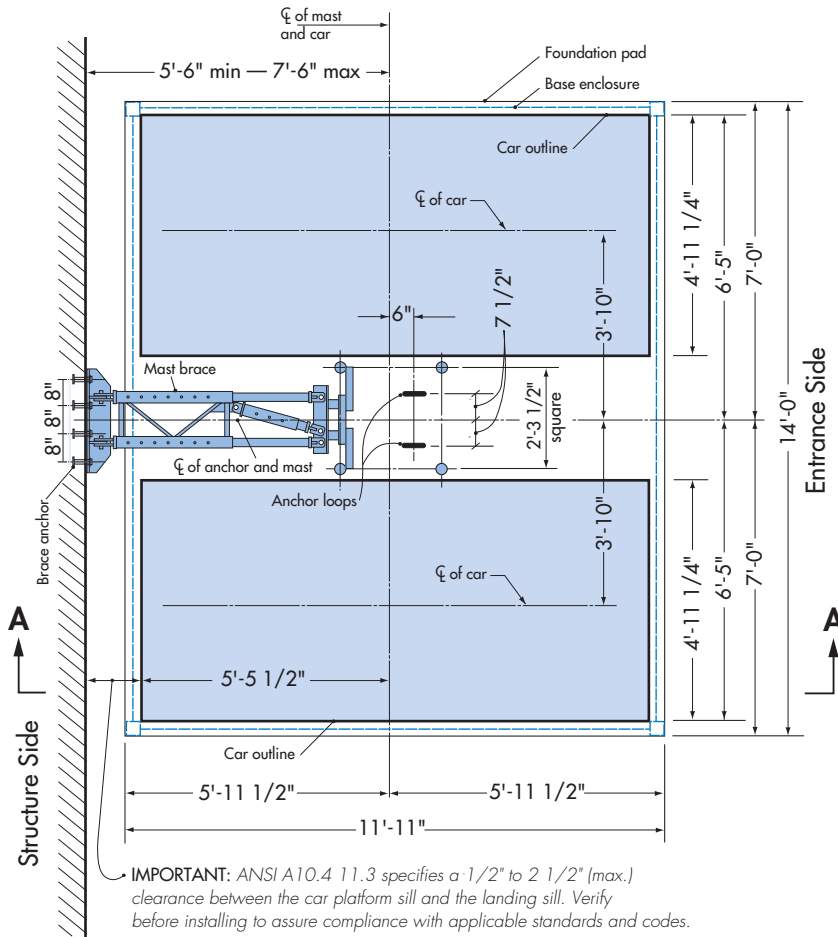
# Pecco PH5000-1 OSFD

## Dual Car Personnel/Material Hoist



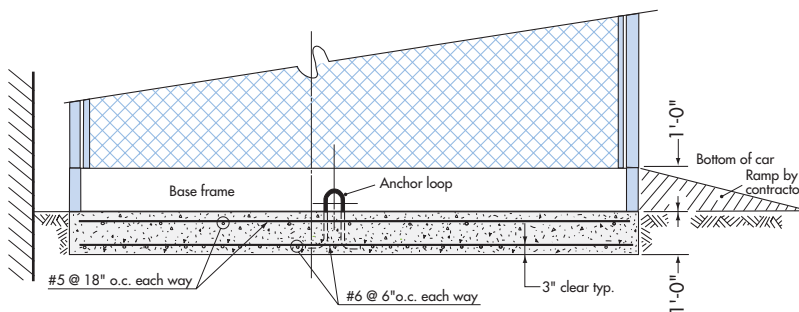
# Morrow Equipment

# Foundation Details - Slab PH5000-10SFD



**Plan View - Slab**

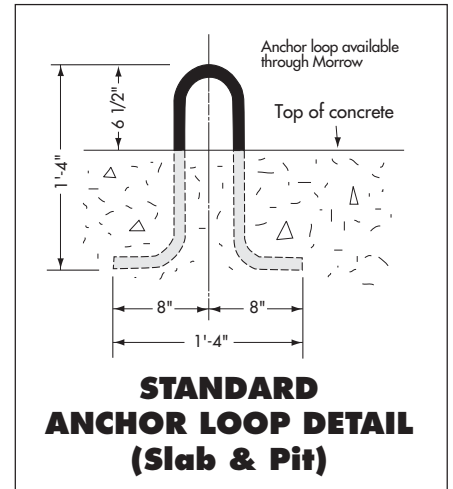
**IMPORTANT!** Verify that the use of a slab foundation conforms to all applicable federal, state and local standards and codes PRIOR to foundation installation.



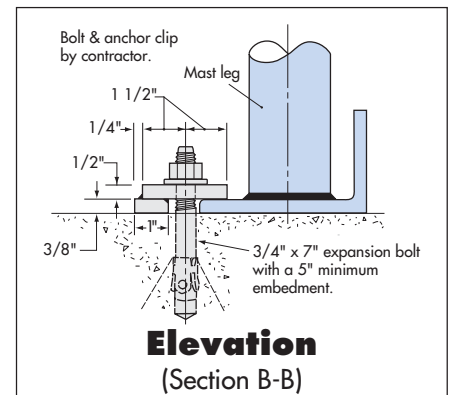
**Elevation - Slab**  
(Section A-A)

**NOTES:**

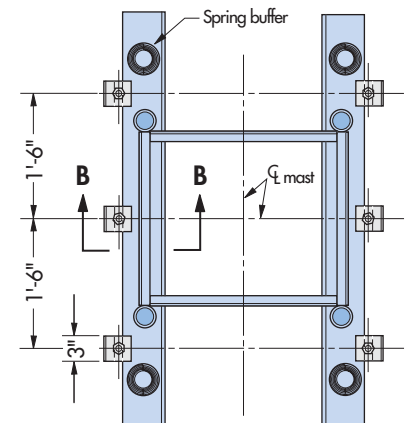
1. Foundation pad: 11'-11 1/2" x 14'-0" x 1'-0" with 3,000 psi concrete.
2. Reinforcing bars: ASTM 615-60.
3. Foundation based on 500-foot mast height. For greater heights, consult Morrow engineering.
4. Foundation pad designed for a minimum soil bearing of 1,000 psf.
5. Be sure to check method of mast brace installation. This may determine the location of the foundation pad.



**STANDARD ANCHOR LOOP DETAIL (Slab & Pit)**



**Elevation (Section B-B)**

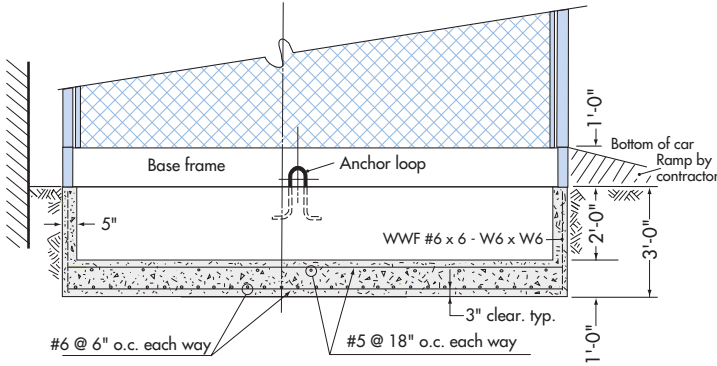


**Plan View ALTERNATE ANCHOR BOLT DETAIL (Slab only)**

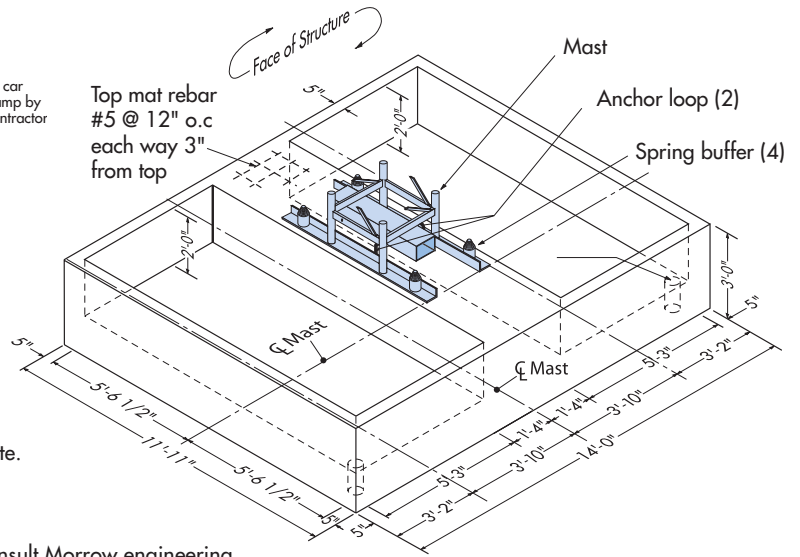
**WARNING:** When using this anchoring alternative, the car **MUST** remain at ground level until first mast brace is installed. For dismantling, the car **MUST** be at ground level when removing bottom mast brace.

# Foundation Details - Pit

# PH5000-10SFD



**Elevation - Pit**

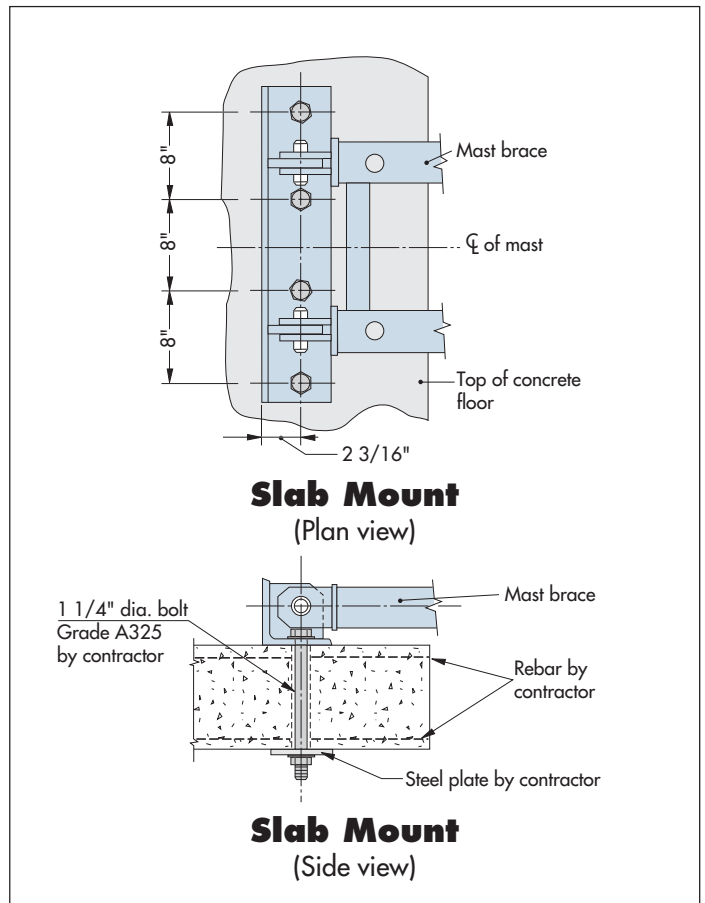
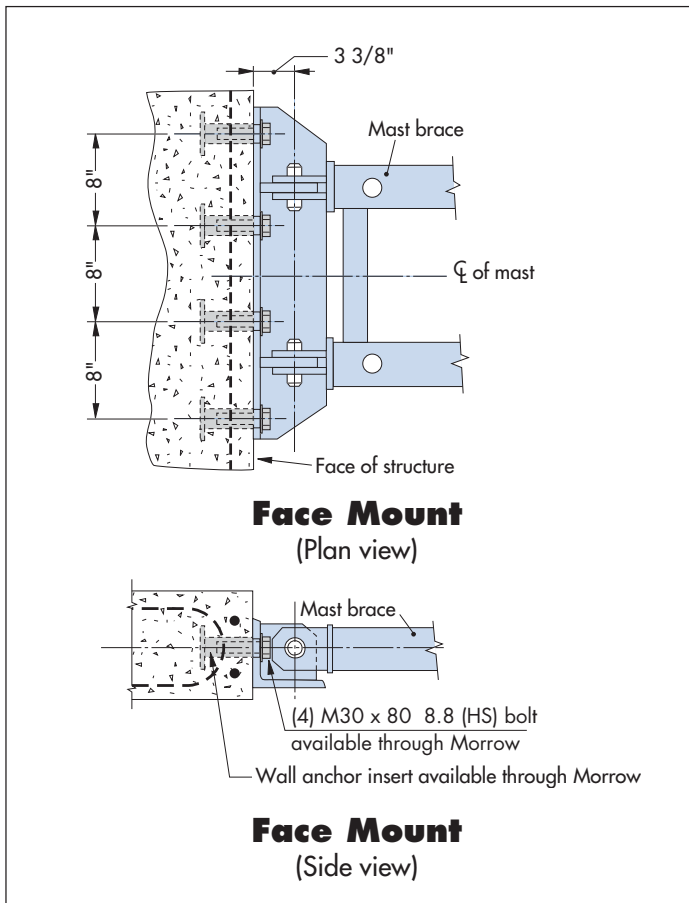


**Isometric View - Pit**

**NOTES:**

1. Foundation pad: 11'-11" x 14'-0" x 3'-0" with 3,000 psi concrete.
2. Pit size: 11'-1" x 5'-3" x 2'-0" (each).
3. Reinforcing bars: ASTM 615-60.
4. Wire mesh: ASTM A185.
5. Foundation based on 500-foot mast height. For greater heights, consult Morrow engineering.
4. Foundation pad designed for a minimum soil bearing of 1,000 psf.
5. Be sure to check method of mast brace installation. This may determine the location of the foundation pad.

## Mast Brace Connections



# SPECIFICATIONS

## Pecco Personnel and Material Hoist Dual Car Model PH5000-10SFD

### GENERAL

Load capacity .....	4,800 lbs (each)	Max. height on reinforced masts .....	1,000'
Number of passengers .....	24 (each car)	Max. freestanding mast height* .....	40'-0"
Car inside dimensions (approx.) ..	4'-10 1/2" x 10'-6" x 8'-8"	*(Applies to standard anchor loop configuration only.)	
Door opening .....	4'-7" x 6'-6"	Max. mast overhang above mast brace .....	30'-0"
Usable floor area .....	48 sq ft (each car)	Maximum mast brace spacing .....	30'-0"
Mast section length .....	4'-11 3/8"	Minimum mast brace spacing .....	23'-0"
Speed .....	150 fpm	Recommended electrical service .....	2 x 150 Amps
Motors .....	3 x 12 hp (each car)	Power requirement .....	480 Volt - 3 phase - 60 Hz

### WEIGHTS

Base enclosure .....	3,500 lbs	Hoist car .....	4,275 lbs
Machinery (each car) .....	1,775 lbs	Mast section (PH6000) .....	450 lbs

### SAFETY FEATURES

- Fail-safe brakes on all hoist motors.
- Heavy-duty overspeed governor which activates safeties that clamp directly onto the mast legs.
- Stop and final limit switches that limit hoist car travel when reaching the end positions.
- Door interlock switches which prevent operation of hoist with doors open.
- Spring buffers.
- All steel cars.

### INSTALLATION

- Adding mast sections does not require special equipment.
- For instructions regarding the installation and operation of the PH5000-10SFD dual car hoist, refer to operation manual.
- Specifications are subject to change without prior notification.
- Drawings are for illustrative purposes only. Do not scale.
- This product must be used in a safe manner. Furthermore, the use of this product and its components must be in conformity with manufacturers' specifications and in compliance with all applicable standards, codes, regulations, etc.
- The slip form (SFD) model does not require counterweight or cat head for operation.

Please refer to the operation manual when installing, operating or dismantling P/M hoist. For other configurations, contact Morrow Equipment for additional information.



**Morrow Equipment**  
C O M P A N Y, L. L. C.

3218 Pringle Road SE • P O Box 3306 • Salem, Oregon 97302-0306 USA  
Tel. 503.585.5721 • Fax. 503.363.1172 • [www.morrowequipment.com](http://www.morrowequipment.com)

*The American home of*  
**LIEBHERR**

Atlanta, GA • Charlotte, NC • Chicago, IL • Denver, CO • Honolulu, HI • Houston, TX • Los Angeles, CA • Las Vegas, NV  
Millwood, NY • St. Louis, MO • San Francisco, CA • Dallas, TX • Seattle, WA • Miami, FL • Tampa, FL • Washington, DC  
Sydney, Australia • Wellington, New Zealand • Vancouver, BC, Canada • Toronto, ON, Canada • México DF, México