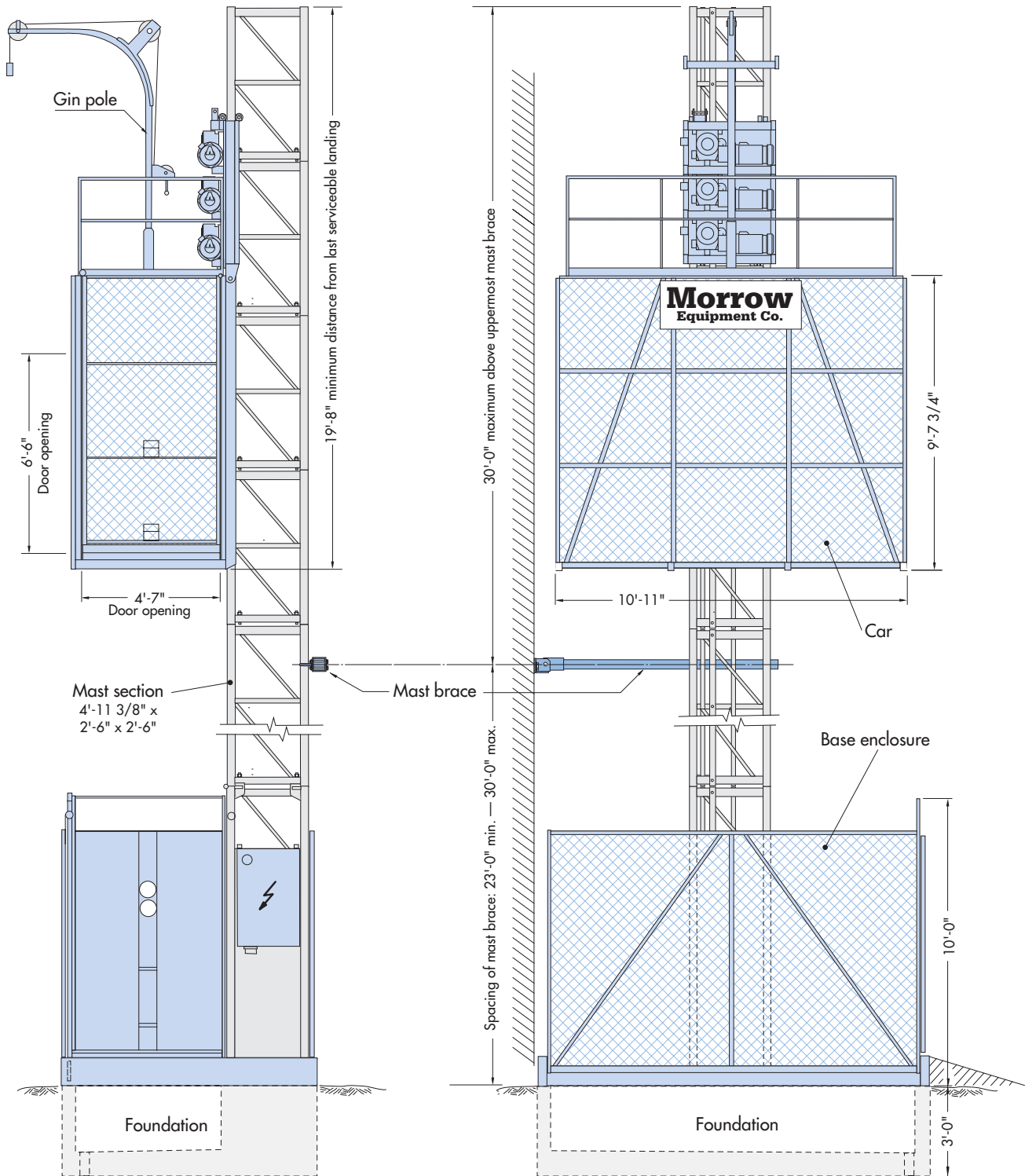


Pecco PH5000-10SF

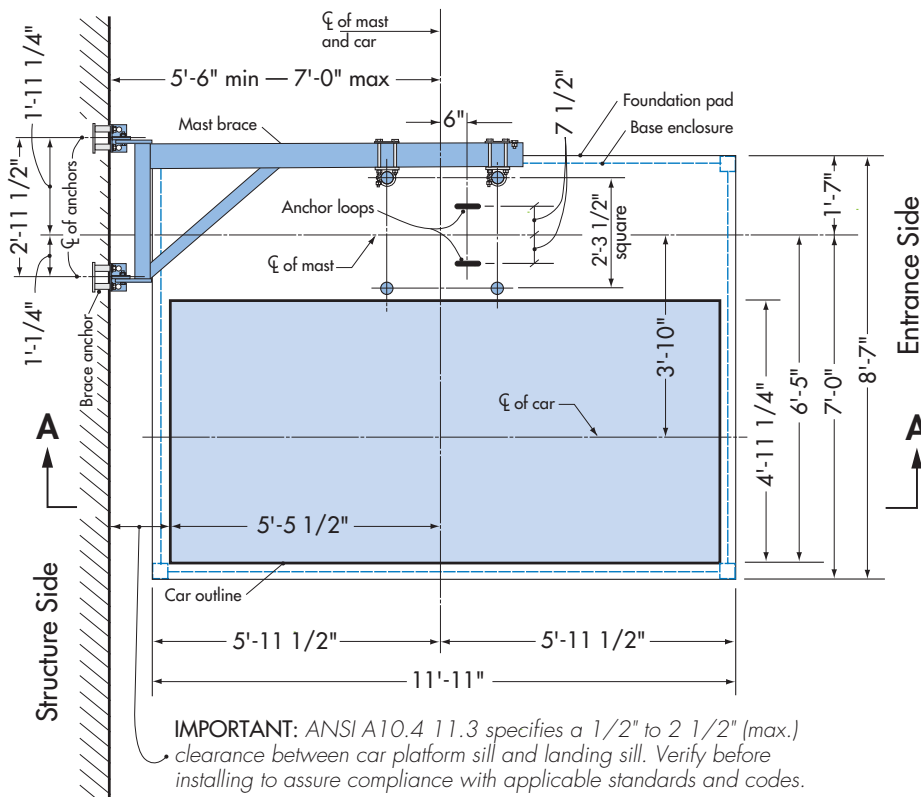
Single Car Personnel/Material Hoist



Morrow Equipment

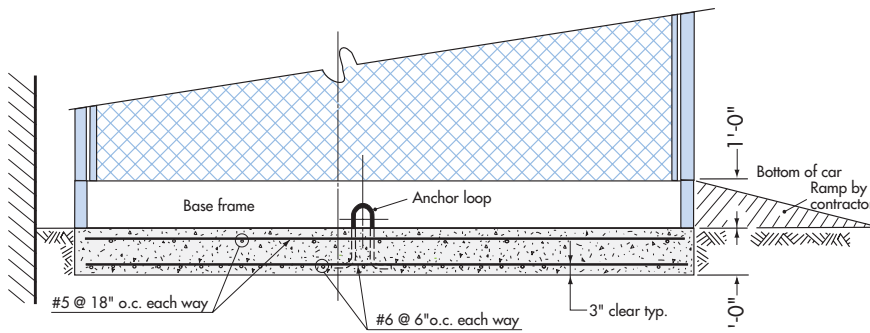
Foundation Details - Slab

PH5000-10SF



Plan View - Slab

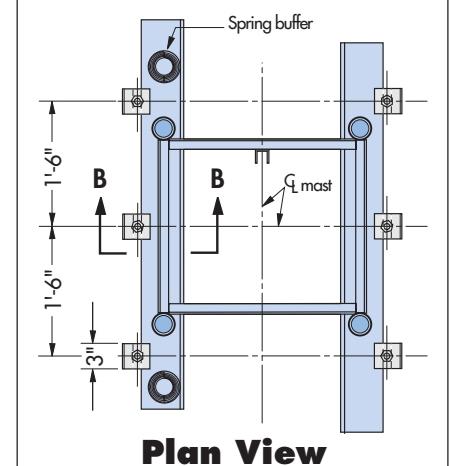
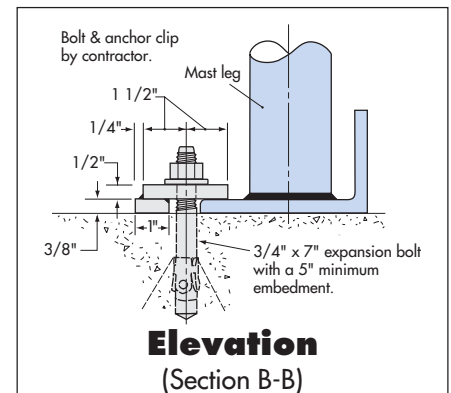
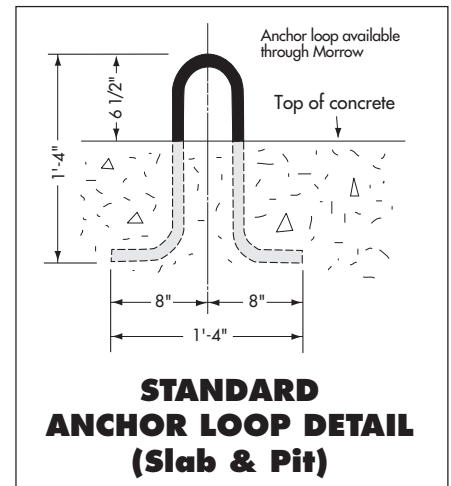
IMPORTANT! Verify that the use of a slab foundation conforms to all applicable federal, state and local standards and codes PRIOR to foundation installation.



Elevation - Slab
(Section A-A)

NOTES:

1. Foundation pad: 11'-11 1/2" x 8'-7" x 1'-0" with 3,000 psi concrete.
2. Reinforcing bars: ASTM 615-60.
3. Foundation based on 500-foot mast height. For greater heights, consult Morrow engineering.
4. Foundation pad designed for a minimum soil bearing of 1,000 psf.
5. Be sure to check method of mast brace installation. This may determine the location of the foundation pad.

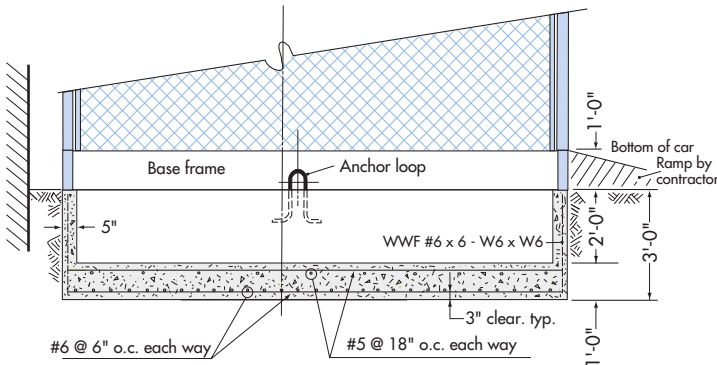


ALTERNATE ANCHOR BOLT DETAIL (Slab only)

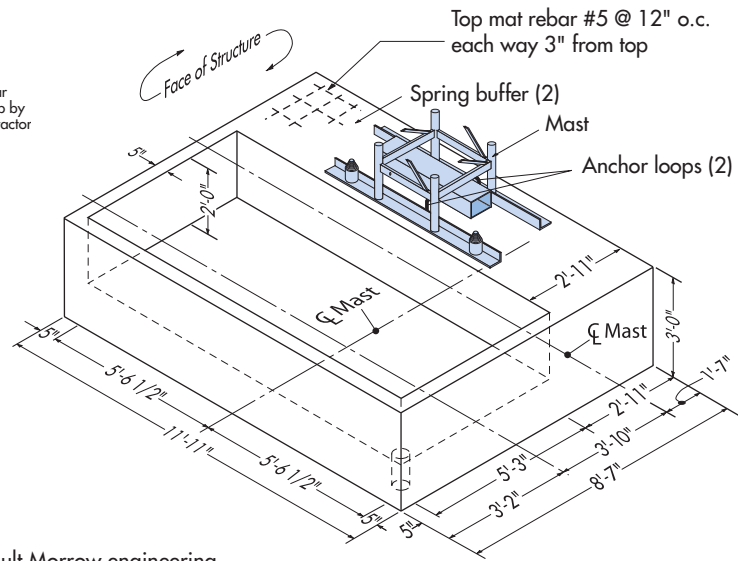
WARNING: When using this anchoring alternative, the car **MUST** remain at ground level until first mast brace is installed. For dismantling, the car **MUST** be at ground level when removing bottom mast brace.

Foundation Details - Pit

PH5000-10SF



Elevation - Pit

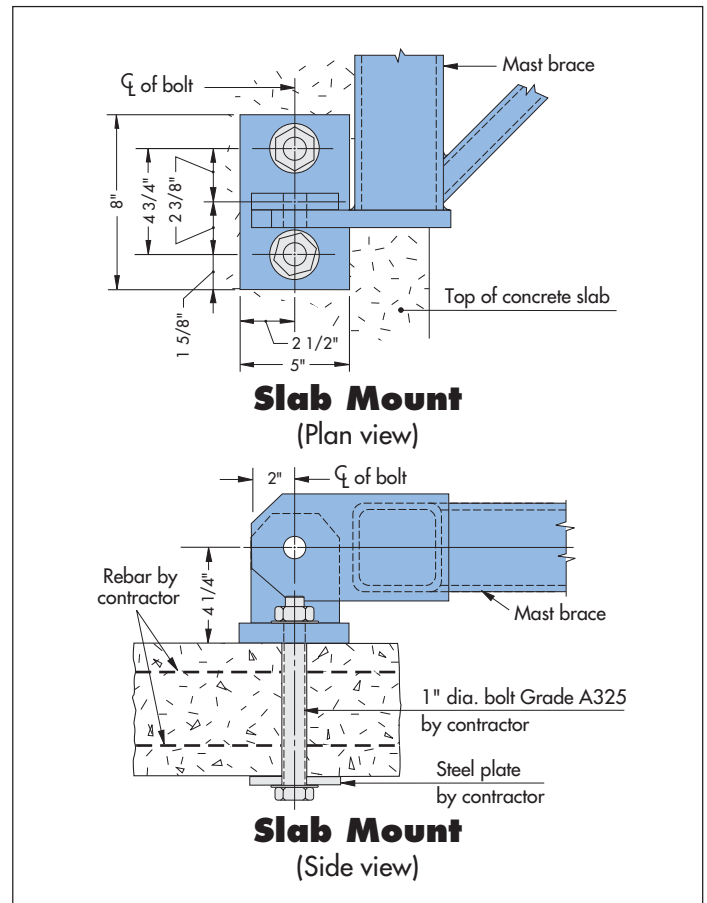
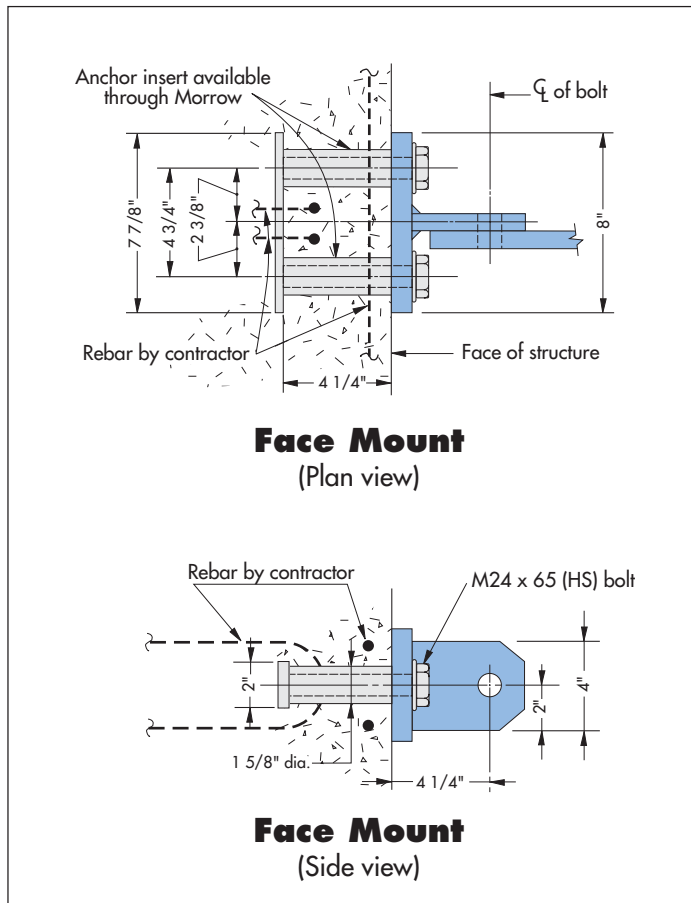


Isometric View - Pit

NOTES:

1. Foundation pad: 11'-11" x 8'-7" x 3'-0" with 3,000 psi concrete.
2. Pit size: 11'-1" x 5'-3" x 2'-0".
3. Reinforcing bars: ASTM 615-60.
4. Wire mesh: ASTM A185.
5. Foundation based on 500-foot mast height. For greater heights, consult Morrow engineering.
4. Foundation pad designed for a minimum soil bearing of 1,000 psf.
5. Be sure to check method of mast brace installation. This may determine the location of the foundation pad.

Mast Brace Connections



SPECIFICATIONS

Pecco Personnel and Material Hoist Single Car Model PH5000-10SF

GENERAL

Load capacity	4,800 lbs	Max. height on reinforced masts	1,000'
Number of passengers	24	Max. freestanding mast height*	40'-0"
Car inside dimensions (approx.) ..	4'-10 1/2" x 10'-6" x 8'-8"	*(Applies to standard anchor loop configuration only.)	
Door opening	4'-7" x 6'-6"	Max. mast overhang above mast brace	30'-0"
Usable floor area	48 sq ft	Maximum mast brace spacing	30'-0"
Mast section length	4'-11 3/8"	Minimum mast brace spacing	23'-0"
Speed	150 fpm	Recommended electrical service	150 Amps
Motors	3 x 12 hp	Power requirement	480 Volt - 3 phase - 60 Hz

WEIGHTS

Base enclosure	3,300 lbs	Hoist car	4,275 lbs
Machinery (3 motors)	1,775 lbs	Mast section (PH6000)	385 lbs

SAFETY FEATURES

- Fail-safe brakes on all hoist motors.
- Heavy-duty overspeed governor which activates safeties that clamp directly onto the mast legs.
- Stop and final limit switches that limit hoist car travel when reaching the end positions.
- Door interlock switches which prevent operation of hoist with doors open.
- Spring buffers.
- All steel car.

INSTALLATION

- Adding mast sections does not require special equipment.
- For instructions regarding the installation and operation of the PH5000-10SF single car hoist, refer to operation manual.
- Specifications are subject to change without prior notification.
- Drawings are for illustrative purposes only. Do not scale.
- This product must be used in a safe manner. Furthermore, the use of this product and its components must be in conformity with manufacturers' specifications and in compliance with all applicable standards, codes, regulations, etc.
- The slip form (SF) model does not require counterweight or cat head for operation.

Please refer to the operation manual when installing, operating or dismantling P/M hoist. For other configurations, contact Morrow Equipment for additional information.



Morrow Equipment

C O M P A N Y, L. L. C.

3218 Pringle Road SE • P O Box 3306 • Salem, Oregon 97302-0306 USA
Tel. 503.585.5721 • Fax. 503.363.1172 • www.morrowequipment.com

The American home of
LIEBHERR

Atlanta, GA • Charlotte, NC • Chicago, IL • Denver, CO • Honolulu, HI • Houston, TX • Los Angeles, CA • Las Vegas, NV
Millwood, NY • St. Louis, MO • San Francisco, CA • Dallas, TX • Seattle, WA • Miami, FL • Tampa, FL • Washington, DC
Sydney, Australia • Wellington, New Zealand • Vancouver, BC, Canada • Toronto, ON, Canada • México DF, México