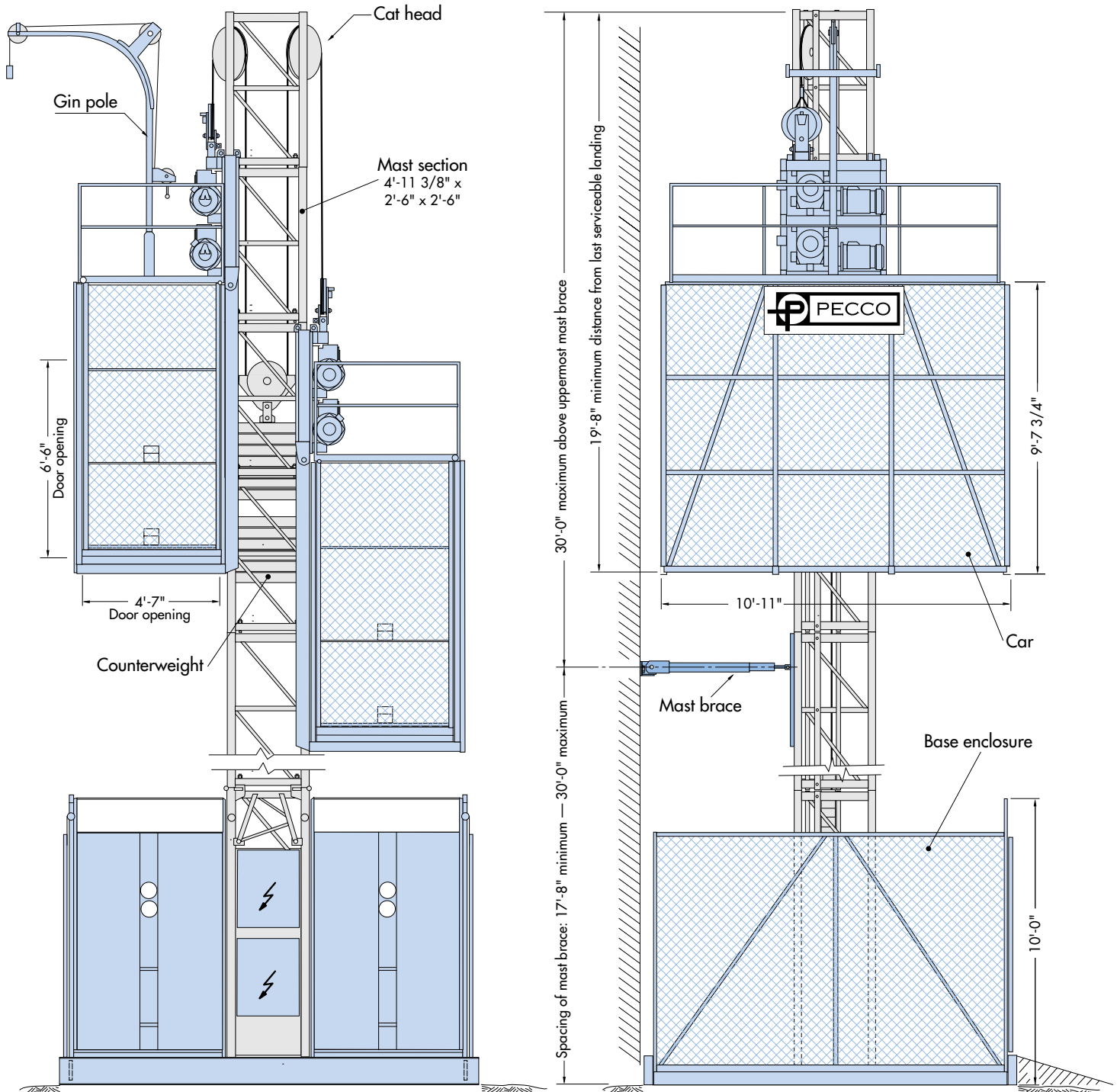


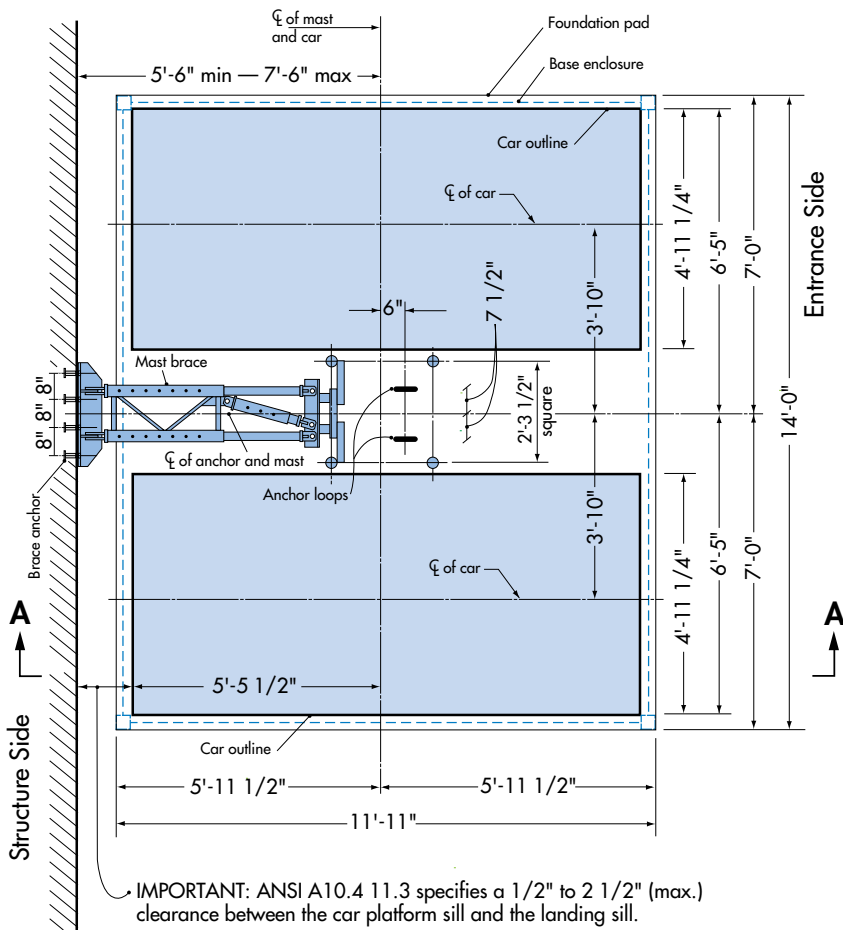
Pecco PH5000-10D

Dual Car Personnel/Material Hoist

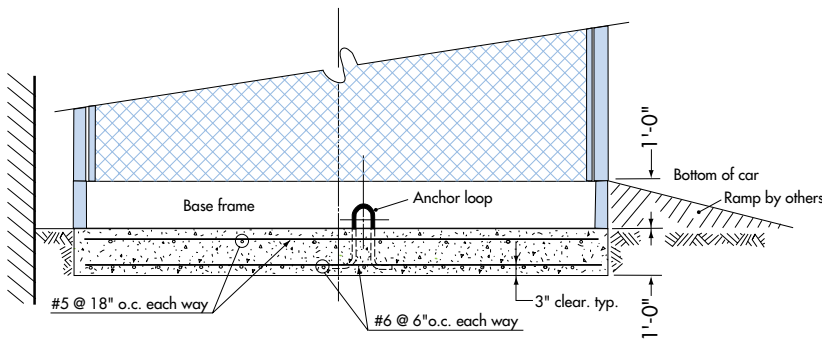


Morrow Equipment

Foundation Details - Slab PH5000-10D



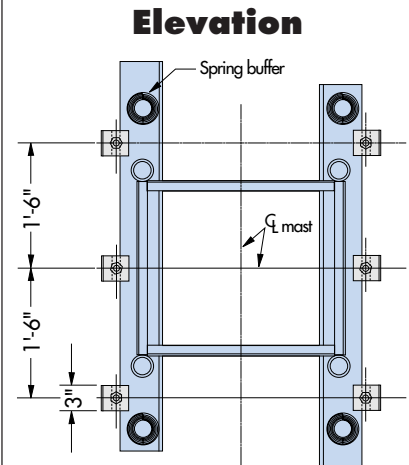
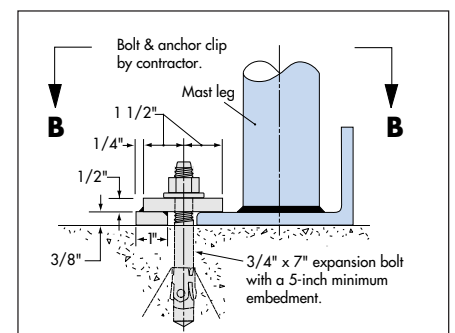
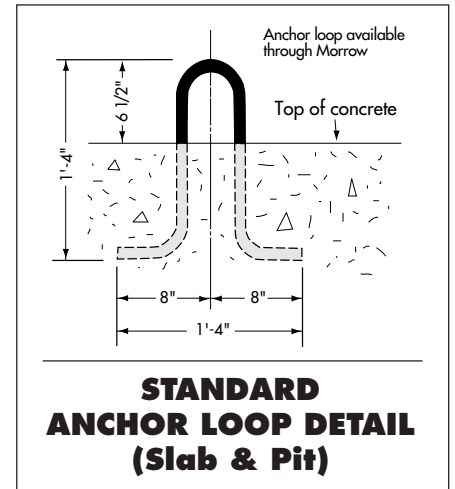
Plan View - Slab



Elevation - Slab
(Section A-A)

NOTES:

1. Foundation pad: 11'-11" x 14'-0" x 1'-0" with 3000 psi concrete.
2. Reinforcing bars are ASTM 615-60.
3. Foundation based on 500-ft mast height. For greater heights, consult Morrow's engineering department.
4. Foundation pad designed for a minimum soil bearing of 1,000 psf.
5. Be sure to check method of installing mast brace. This may determine the location of the foundation pad.



Plan View
(Section B-B)

ALTERNATE ANCHOR BOLT DETAIL (Slab & Pit)

WARNING: When using this anchoring alternative, the car **MUST** remain at ground level until first mast brace is installed. For dismantling, the car **MUST** be at ground level when removing bottom mast brace.

SPECIFICATIONS

Pecco Personnel and Material Hoist Dual Car Model PH5000-10D

GENERAL

Load capacity	4,800 lbs (each car)	Max. height on standard masts	500'
Number of passengers	24 (each car)	Max. height on reinforced masts	1,000'
Car inside dimensions (approx.) ..	4'-10 1/2" x 10'-6" x 8'-8"	Max. freestanding mast height*	40'-0"
Door opening	4'-7" x 6'-6"	<i>*(Applies to standard anchor loop configuration only.)</i>	
Usable floor area	48 sq ft (each car)	Max. mast overhang above top mast brace	30'-0"
Mast section length	4'-11 3/8"	Maximum mast brace spacing	30'-0"
Speed	150 fpm	Minimum mast brace spacing	17'-8"
Motors	2 x 12 hp (each car)	Recommended electrical service	2 x 100 Amps
		Power requirement	440 Volt - 3 phase - 60 Hz

WEIGHTS

Base enclosure	3,500 lbs	Hoist car (each)	3,750 lbs
Counterweight	7,500 lbs	Mast section (standard)	340 lbs

SAFETY FEATURES

- Fail-safe brakes on both hoist motors.
- Heavy-duty overspeed governor which activates safeties that clamp directly onto the mast legs.
- Stop and final limit switches that limit hoist car travel when reaching the end positions.
- Door interlock switches which prevent operation of hoist with doors open.
- Spring buffers.
- All steel car.

INSTALLATION

- Adding mast sections does not require special equipment.
- For instructions regarding the installation and operation of the PH5000-10D dual car hoist, refer to the operation manual.
- Specifications are subject to change without prior notification.
- Drawings are for illustrative purposes only. Do not scale.
- This product must be used in a safe manner. Furthermore, the use of this product and its components must be in conformity with manufacturers' specifications and in compliance with all applicable standards, codes, regulations, etc.
- Hoists may have motors and gears mounted inside the car or above the car.



Morrow Equipment
C O M P A N Y, L. L. C.

3218 Pringle Road SE • P O Box 3306 • Salem OR 97302 USA • 503/585 5721 • Fax 503/363 1172



Branch Offices: Atlanta, GA • Chicago, IL • Denver, CO • Honolulu, HI • Houston, TX • Los Angeles, CA • Las Vegas, NV
Millwood, NY • San Francisco, CA • Seattle, WA • Miami, FL • Tampa, FL • Washington, DC • Sydney, Australia
Wellington, New Zealand • Vancouver, BC, Canada • Toronto, ON, Canada • Mexico City, Mexico • Monterrey, Mexico