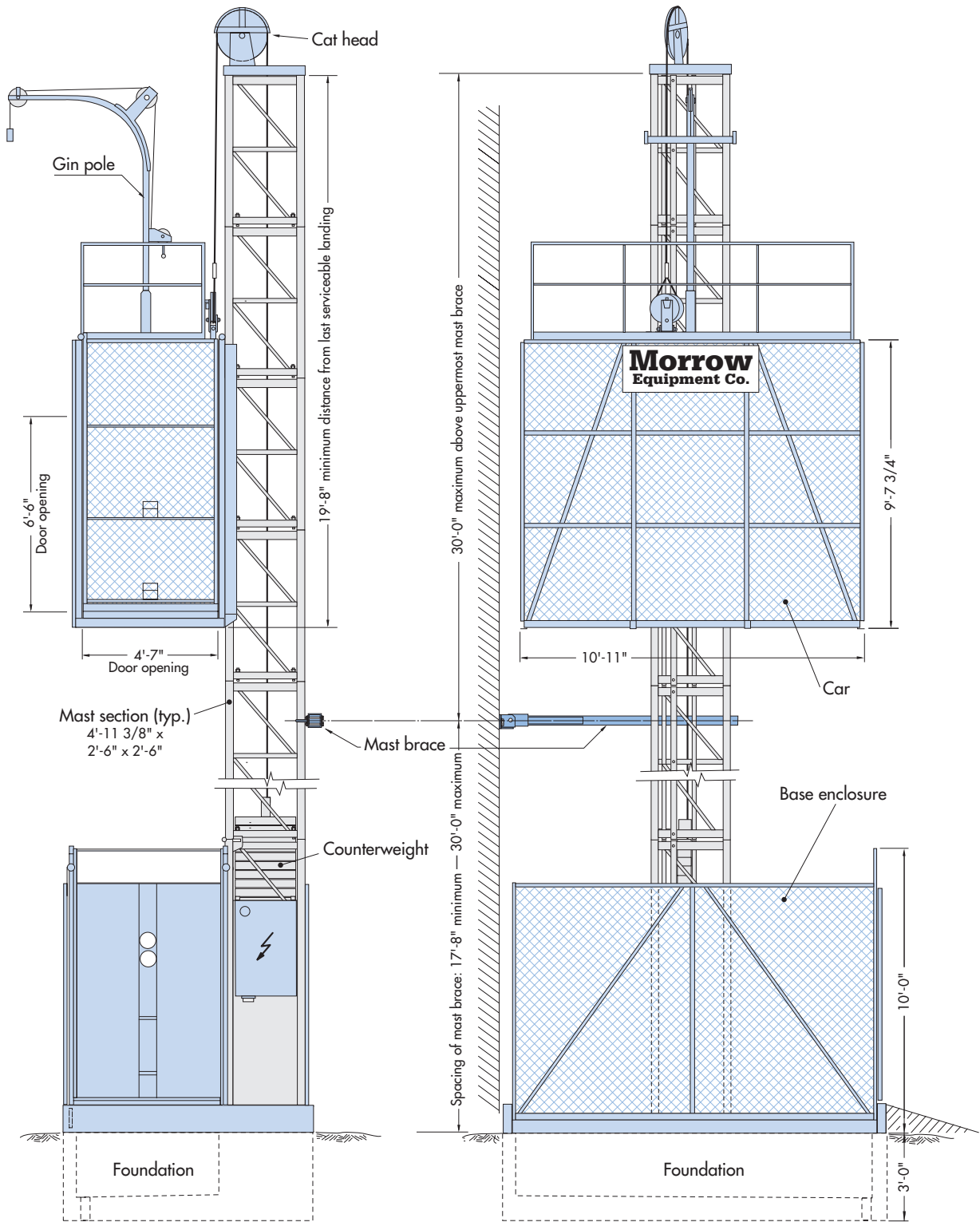


# Pecco PH5000-10

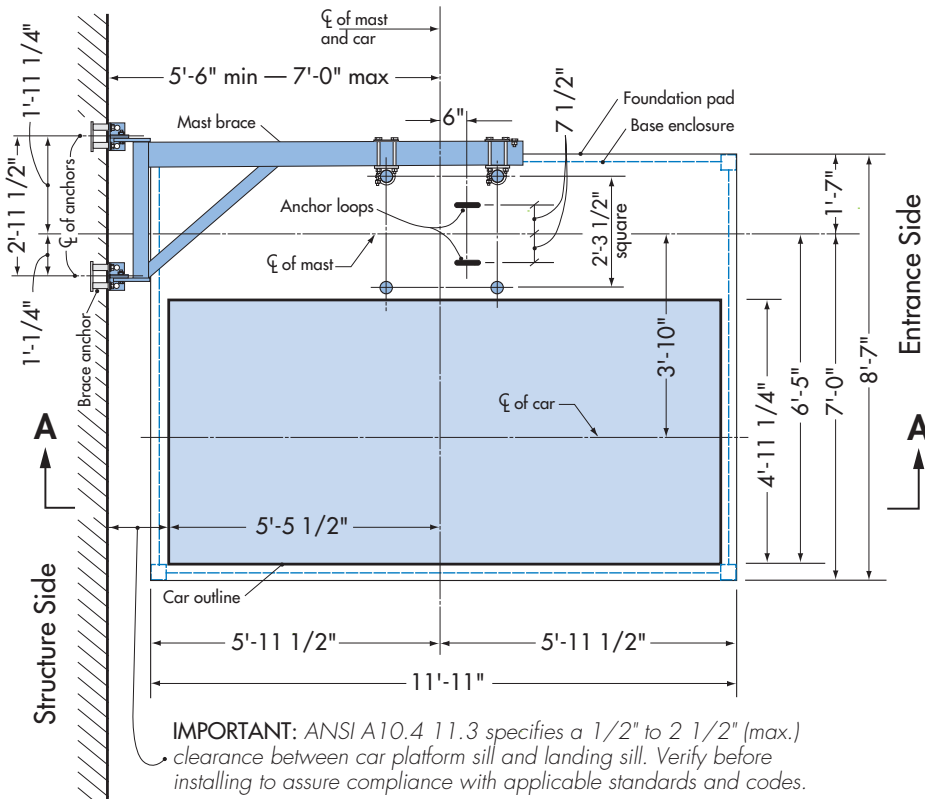
## Single Car Personnel/Material Hoist



# Morrow Equipment

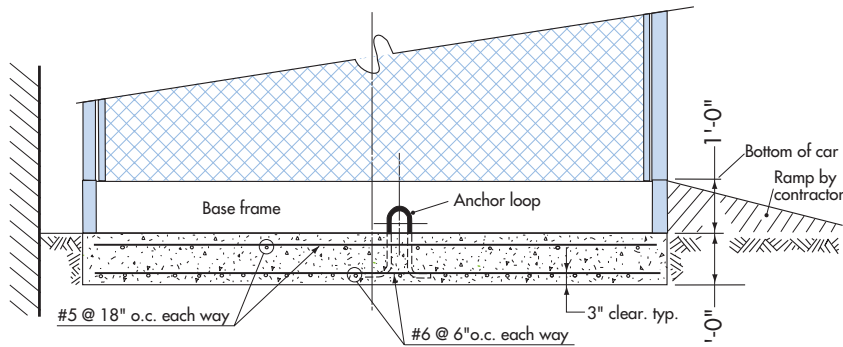
# Foundation Details - Slab

# PH5000-10



**Plan View - Slab**

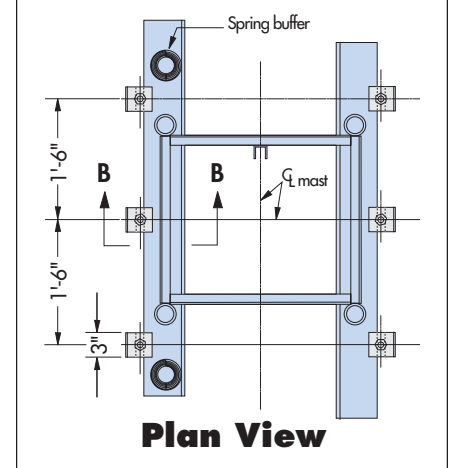
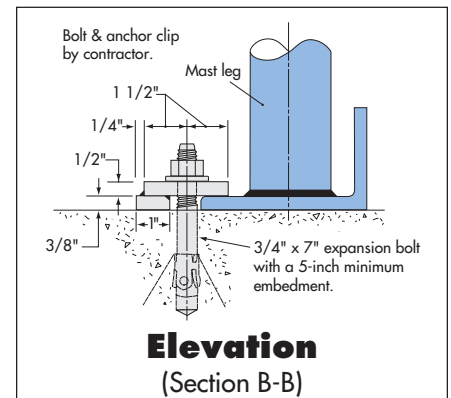
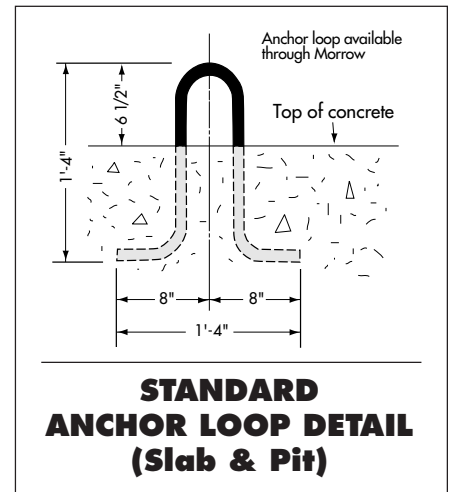
**IMPORTANT!** Verify that the use of a slab foundation conforms to all applicable federal, state and local standards and codes PRIOR to foundation installation.



**Elevation - Slab**  
(Section A-A)

**NOTES:**

1. Foundation pad: 11'-11" x 8'-7" x 1'-0" with 3,000 psi concrete.
2. Reinforcing bars: ASTM 615-60.
3. Foundation based on 500-foot mast height. For greater heights, consult Morrow engineering.
4. Foundation pad designed for a minimum soil bearing of 1,000 psf.
5. Be sure to check method of mast brace installation. This may determine the location of the foundation pad.

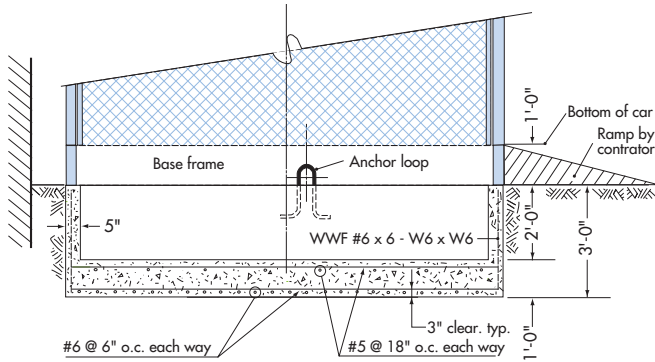


**ALTERNATE ANCHOR BOLT DETAIL (Slab Only)**

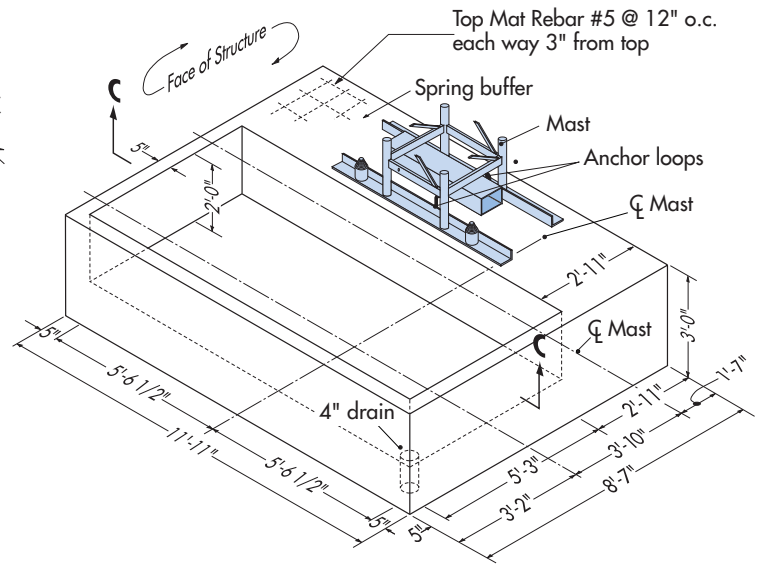
**WARNING:** When using this anchoring alternative, the car **MUST** remain at ground level until first mast brace is installed. For dismantling, the car **MUST** be at ground level when removing bottom mast brace.

# Foundation Details - Pit

# PH5000-10



**Elevation - Pit**  
(Section C-C)

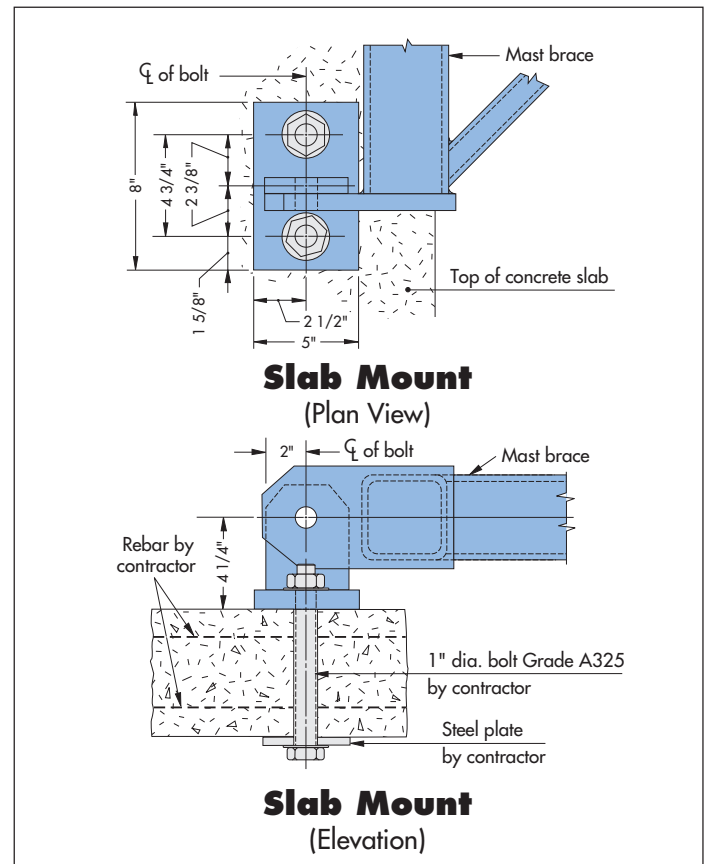
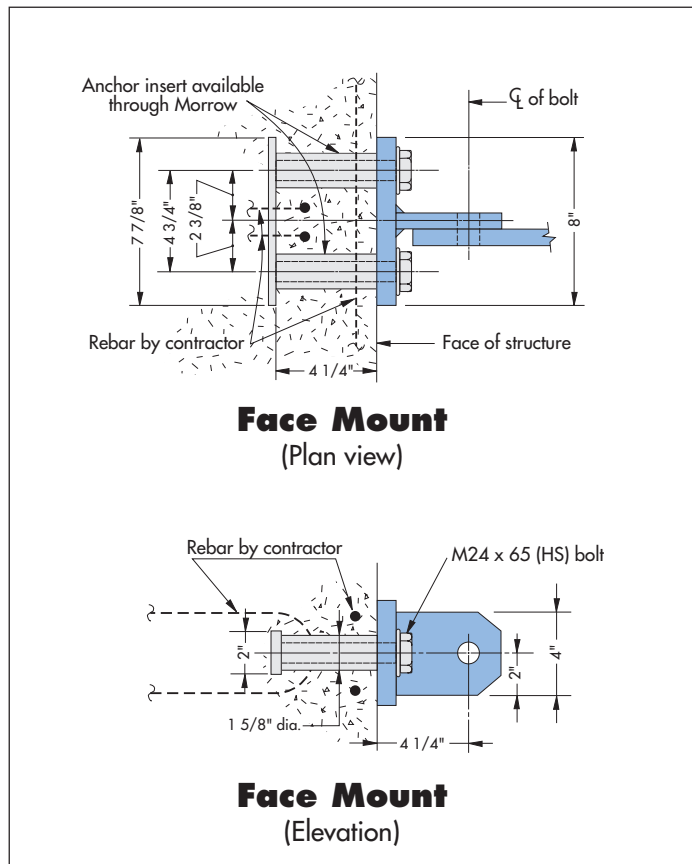


**Isometric View - Pit**

**NOTES:**

1. Foundation pad: 11'-11" x 8'-7" x 3'-0" with 3,000 psi concrete.
2. Pit size: 11'-1" x 5'-3" x 2'-0".
3. Reinforcing bars: ASTM 615-60.
4. Wire mesh: ASTM A185
5. Foundation based on 500-foot mast height. For greater heights, consult Morrow engineering.
6. Foundation pad designed for a minimum soil bearing of 1,000 psf.
7. Be sure to check method of mast brace installation. This may determine the location of the foundation pad.

## Mast Brace Connections



# SPECIFICATIONS

## Pecco Personnel and Material Hoist Single Car Model PH5000-10

### GENERAL

|                                    |                             |   |                            |
|------------------------------------|-----------------------------|---|----------------------------|
| Load capacity .....                | 4,800 lbs                   | Max. height on standard masts .....                           | 500'                       |
| Max. number of passengers .....    | 24                          | Max. height on reinforced masts .....                         | 1,000'                     |
| Car inside dimensions (approx.) .. | 4'-10 1/2" x 10'-6" x 8'-8" | Max. freestanding mast height* .....                          | 40'-0"                     |
| Door opening .....                 | 4'-7" x 6'-6"               | <i>*(Applies to standard anchor loop configuration only.)</i> |                            |
| Usable floor area .....            | 51.2 sq ft                  | Max. mast above uppermost mast brace .....                    | 30'-0"                     |
| Mast section length .....          | 4'-11 3/8"                  | Maximum mast brace spacing .....                              | 30'-0"                     |
| Speed .....                        | 150 fpm                     | Minimum mast brace spacing .....                              | 17'-8"                     |
| Motors .....                       | 2 x 12 hp                   | Recommended electrical service .....                          | 100 Amps                   |
|                                    |                             | Power requirement .....                                       | 480 Volt – 3 phase – 60 Hz |

### WEIGHTS

|                      |           |                               |           |
|----------------------|-----------|-------------------------------|-----------|
| Base enclosure ..... | 3,300 lbs | Hoist car .....               | 3,750 lbs |
| Counterweight .....  | 5,300 lbs | Mast section (standard) ..... | 275 lbs   |

### SAFETY FEATURES

- Fail-safe brakes on both hoist motors.
- Heavy-duty overspeed governor which activates safeties that clamp directly onto the mast legs.
- Stop and final limit switches that limit hoist car travel when reaching the end positions.
- Door interlock switches which prevent operation of hoist with doors open.
- Spring buffers.
- All steel car.

### INSTALLATION

- Adding mast sections does not require additional special equipment.
- For instructions regarding installation and operation of the PH5000-10 single car hoist, refer to the operation manual.
- Specifications are subject to change without prior notification.
- Drawings are for illustrative purposes only. Do not scale.
- This product must be used in a safe manner. Furthermore, the use of this product and its components must be in conformity with manufacturers' specifications and in compliance with all applicable standards, codes, regulations, etc.
- Hoists may have motors and gears mounted inside the car or above the car.

Please refer to the operation manual when installing, operating or dismantling P/M hoist. For other configurations, contact Morrow Equipment for additional information.



**Morrow Equipment**  
C O M P A N Y, L. L. C.

3218 Pringle Road SE • P O Box 3306 • Salem, Oregon 97302-0306 USA  
Tel. 503.585.5721 • Fax. 503.363.1172 • [www.morrowequipment.com](http://www.morrowequipment.com)

*The American home of*  
**LIEBHERR**

Atlanta, GA • Charlotte, NC • Chicago, IL • Denver, CO • Honolulu, HI • Houston, TX • Los Angeles, CA • Las Vegas, NV  
Millwood, NY • St. Louis, MO • San Francisco, CA • Seattle, WA • Miami, FL • Tampa, FL • Washington, DC  
Sydney, Australia • Wellington, New Zealand • Vancouver, BC, Canada • Toronto, ON, Canada • México DF, México