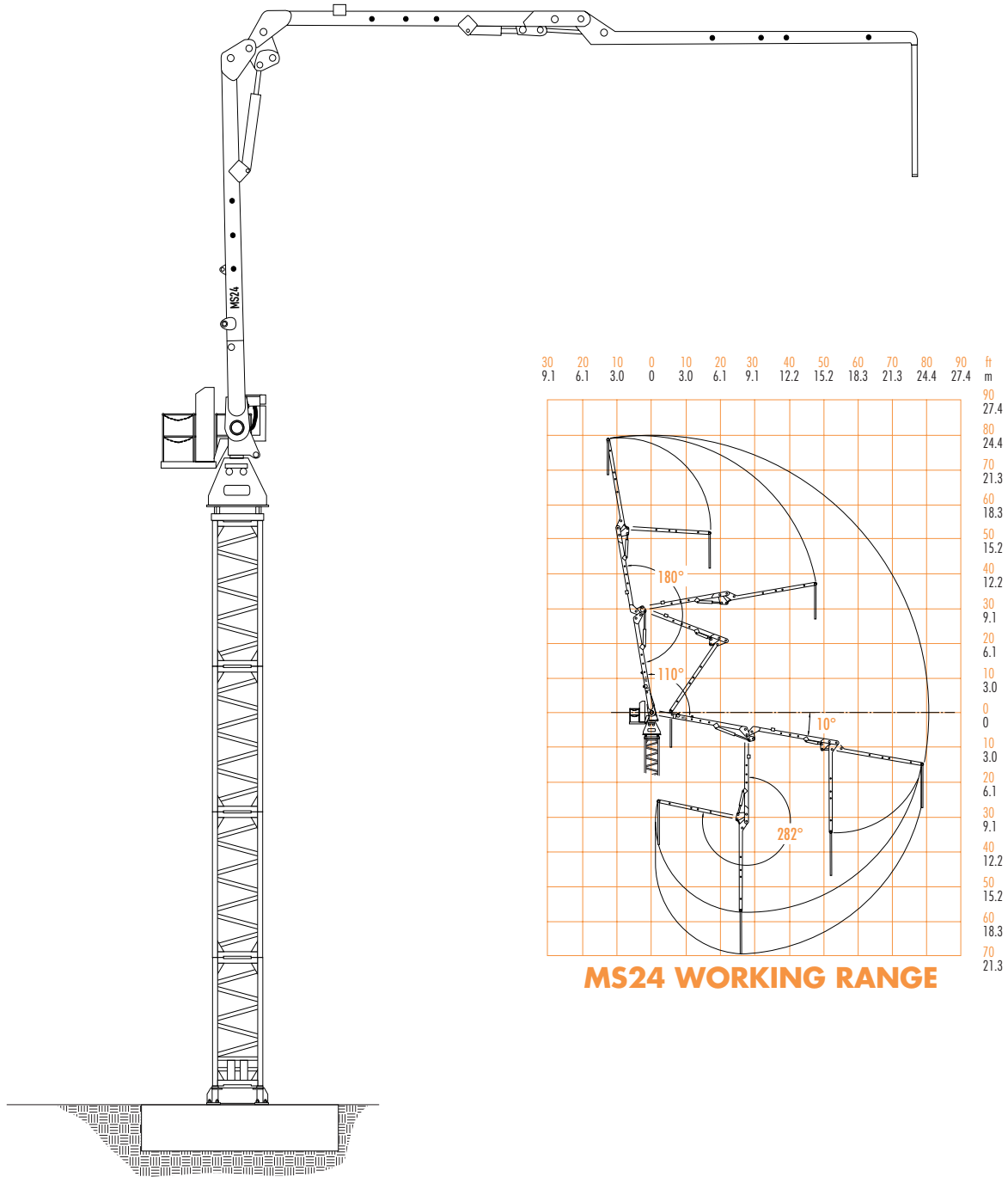


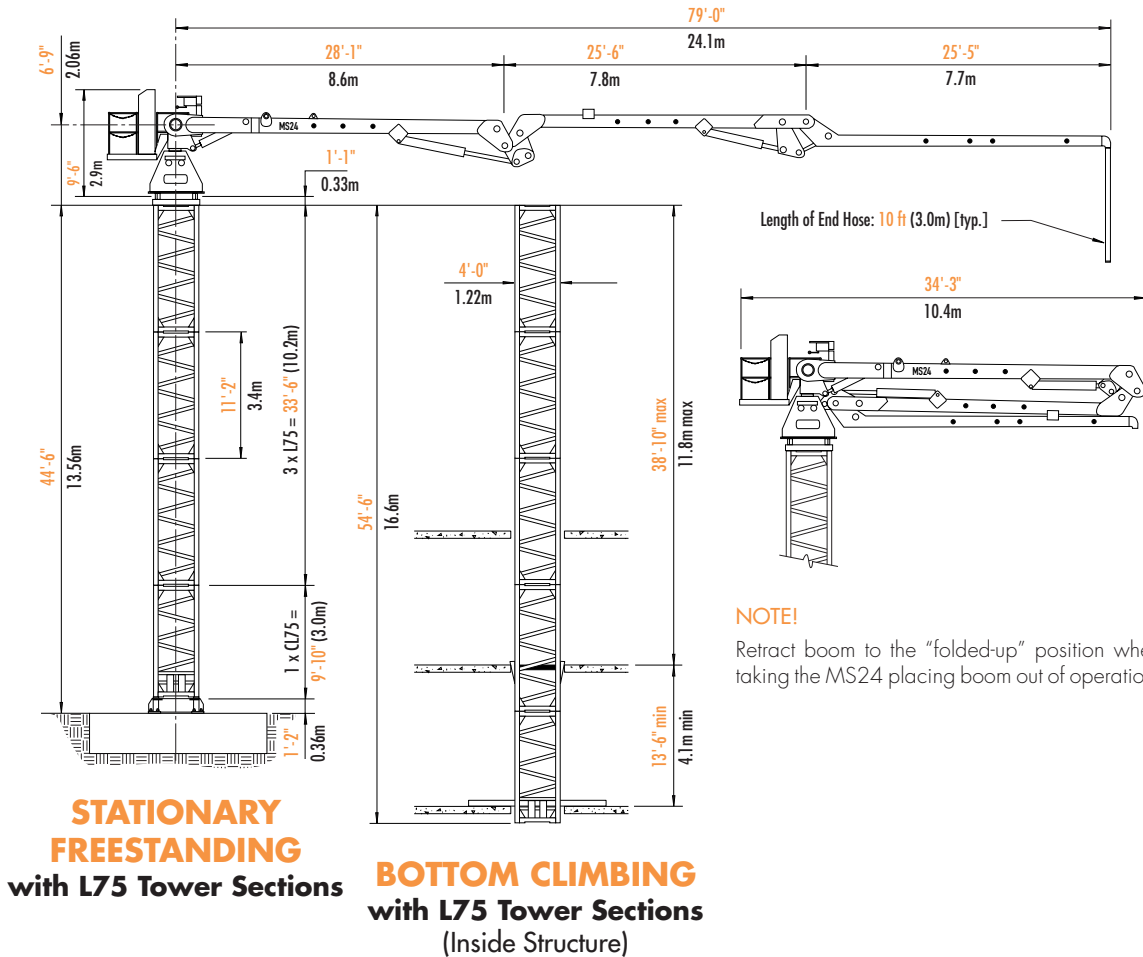
# Pecco MS24

## STATIONARY CONCRETE PLACING BOOM



**Morrow Equipment**

## Pecco Stationary Concrete Placing Boom



### Specifications

### MS24

Maximum boom reach	79 ft	24m
Number of boom sections	3	3
Slickline diameter	5"	125mm
Slewing range	390°	390°
Coverage	19,607 sq ft	1 820 sq m
Dead weight w/o tower sections	14,300 lbs	6 500 kg

**NOTE!** Specifications subject to change without notice. Weights indicated are approximate. Scale components before lifting. Contact Morrow Equipment for specific information regarding dimensions, reaction forces, slab openings or alternate tower configurations.

# SPECIFICATIONS

## and Special Features of the Pecco Stationary Concrete Placing Boom

The Pecco MS24 series stationary placing boom was designed to the strictest U.S. standards for concrete placement. Using high-grade steel construction and computer-optimized box member design, this series is manufactured to be a low weight, compact unit. Easy to transport, assemble and dismantle, the Pecco line of placing booms provides fast, uniform pours with pinpoint accuracy eliminating waste and shock loading of forms while minimizing aggregate separation.

The MS24 placing boom can be easily and quickly mounted on tower crane masts in either a freestanding or climbing configuration. By installing the booms in key positions, an entire placement area can be efficiently covered saving valuable pour time, crane hook time and crew time.

### Operator Platform

The operator's platform is mounted with boom assembly onto the slewing pedestal. It rotates with the boom providing the operator with a continuous line of sight of the entire concrete placement area. It uses a four-pin quick connect/disconnect system for easy assembly, dismantlement and transporting.

A complete set of hand-lever controls is conveniently located on the operator's platform.

### Remote Control

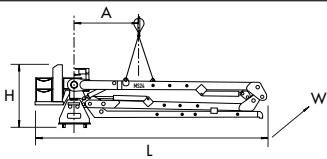

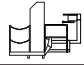

In addition to operator controls on the platform, an optional remote control pack is available. Three 4-way control levers allow up to 5 boom functions to be performed simultaneously. The remote allows the boom operator the flexibility of being positioned at the point of placement or a vantage should visual obstructions hinder the view from the operator's platform. The remote is equipped with an 80-foot power cable.

### Power Pack

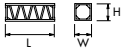
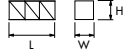
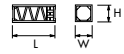
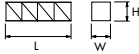
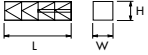
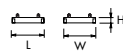
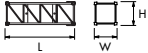
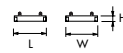
The hydraulic pump drive is located on the operator's platform for easy access. This unit provides for all movements of the boom with two 15 hp (11.2 kW) AC motors operating on 480 V, 60-cycle, 3-phase power and a recommended 75-Amp service. The power pack is pin-connected with hydraulic lines equipped for quick-connect/disconnect operation.

Specifications subject to change without notice. For other configurations and specifications, contact Morrow Equipment.

## MS24 PLACING BOOM UPPER ASSEMBLY COMPONENTS

Description		Dimensions L x W x H	Weight
<b>MS24 Placing Boom Assembly</b> (includes pedestal, operator platform and 3 boom sections)	 <p>A = Distance from center of boom pivot to center of gravity A = 7'-1" (2.16m)</p>	34'-3" x 6'-8" x 9'-6" 10.4m x 2.03m x 2.9m	14,300 lbs 6 500 kg
Slewing pedestal		(Wts. & dims. included in MS24 Assembly.)	3,150 lbs 1 430 kg
Operator Platform (includes power pack)		(Wts. & dims. included in MS24 Assembly.)	2,350 lbs 1 070 kg
79-ft Boom Assembly (3 sections)		(Weight included in MS24 Assembly.)	8,800 lbs 4 000 kg

## MS24 TOWER COMPONENTS

Description		Dimensions L x W x H	Weight	Description		Dimensions L x W x H	Weight
<b>Tower Section</b> (L75 Standard)		11'-2" x 4'-0" x 4'-0" 3.4m x 1.22m x 1.22m	2,200 lbs 1 000 kg	<b>Tower Section</b> (P14 Standard)		13'-9" x 6'-3" x 6'-3" 4.2m x 1.9m x 1.9m	3,700 lbs 1 680 kg
<b>Tower Section</b> (CL75 Climbing)		9'-10" x 4'-0" x 4'-0" 3.0m x 1.22m x 1.22m	1,900 lbs 860 kg	<b>Tower Section</b> (L14)		19'-10" x 6'-2" x 6'-2" 6.05m x 1.88m x 1.88m	5,300 lbs 2 410 kg
<b>Tower Section</b> <sup>1</sup> (P14 Climbing)		18'-0" x 6'-3" x 6'-3" 5.5m x 1.9m x 1.9m	11,350 lbs 5 150 kg	<b>Transition Section</b> (L75 to Pedestal)		4'-0" x 4'-0" x 1'-4" 1.22m x 1.22m x 0.41m	450 lbs 205 kg
<b>Tower Section</b> <sup>2</sup> (P14 Climbing)		11'-2" x 4'-0" x 4'-0" 3.4m x 1.22m x 1.22m	6,290 lbs 2 855 kg	<b>Transition Section</b> (L14 or P14 to Pedestal)		6'-3" x 6'-3" x 1'-4" 1.9m x 1.9m x 0.41m	2,100 lbs 950 kg

**NOTE:** Weights and dimensions are approximate. Scale components before lifting.

- <sup>1</sup> With hydraulic equipment installed.  
<sup>2</sup> With hydraulic equipment removed.

Specifications subject to change without notice. For other configurations and specifications, contact Morrow Equipment.



## Morrow Equipment

C O M P A N Y, L. L. C.

3218 Pringle Road SE • P O Box 3306 • Salem OR 97302 USA • 503/585 5721 • Fax 503/363 1172



Branch Offices: Atlanta, GA • Chicago, IL • Denver, CO • Honolulu, HI • Houston, TX • Los Angeles, CA  
 Las Vegas, NV • Millwood, NY • San Francisco, CA • Seattle, WA • Miami, FL • Tampa, FL • Washington, DC  
 Sydney, Australia • Wellington, New Zealand • Vancouver, BC, Canada • Mexico City, Mexico • Monterrey, Mexico