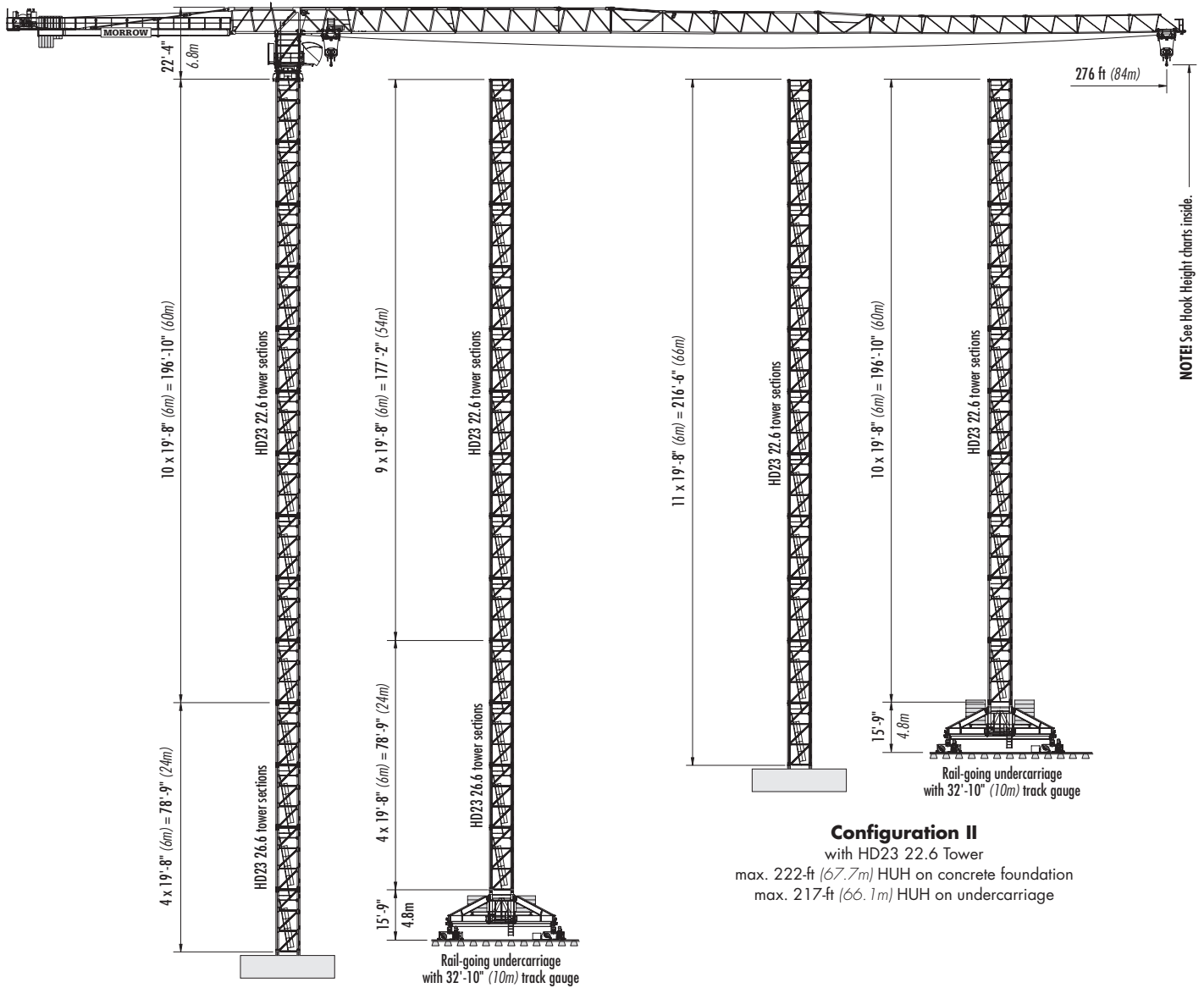


# Comedil CTT 561A-20

## "FLAT TOP" TOWER CRANE



**Configuration I**  
 with HD23 26.6 and HD23 22.6 Tower  
 max. 281-ft (85.7m) HUH on concrete foundation  
 max. 276-ft (84.1m) HUH on undercarriage

**Configuration II**  
 with HD23 22.6 Tower  
 max. 222-ft (67.7m) HUH on concrete foundation  
 max. 217-ft (66.1m) HUH on undercarriage

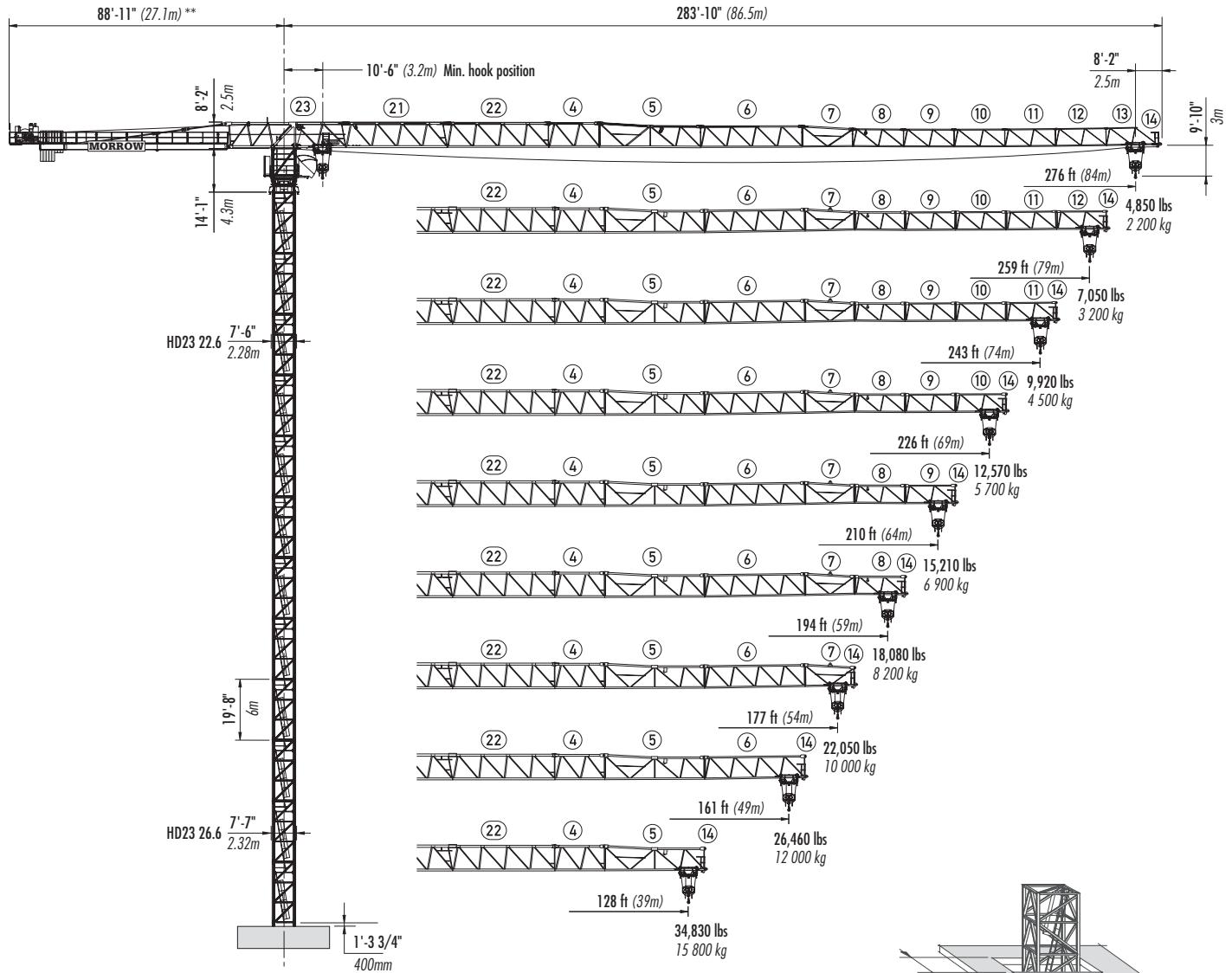
**FREESTANDING**  
 stationary and travelling



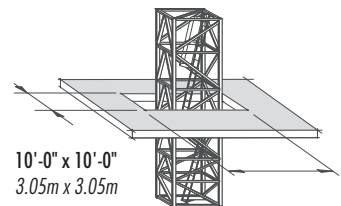
# Morrow Equipment

# Comedil CTT 561A-20

## Jib Layout



**FREESTANDING**  
with HD23 22.6 and 26.6 tower



**SLAB OPENING**  
Minimum recommended

**\*\* IMPORTANT!** The number and type of counterweight blocks required depend on the jib assembly and hoist unit installed. Please consult operation manual prior to installing counterweights. For additional information, contact Morrow Equipment.

**IMPORTANT!** Please consult crane's operation manual before erecting, operating, climbing and dismantling crane.

**NOTE!** Minimum recommended slab opening for erection and dismantlement. For other factors including deflection, contact Morrow engineering.

# Comedil CTT 561A-20

## Hook Heights

Configuration I <sup>2</sup>						Configuration II <sup>2</sup>					
<b>HD23 26.6</b> and <b>HD23 22.6</b> tower sections 19'-8" (6m)						<b>HD23 22.6</b> tower sections 19'-8" (6m)					
		No. of Tower Sections	Tower Section Type	static concrete footing				rail-traveling undercarriage		No. of Tower Sections	Tower Section Type
		feet	meters	feet	meters			feet	meters	feet	meters
1	HD23 26.6	25	7.7	40	12.1	1	HD23 22.6	25	7.7	40	12.1
2	HD23 26.6	45	13.7	59	18.1	2	HD23 22.6	45	13.7	59	18.1
3	HD23 26.6	65	19.7	79	24.1	3	HD23 22.6	65	19.7	79	24.1
4	HD23 26.6	84	25.7	99	30.1	4	HD23 22.6	84	25.7	99	30.1
5	HD23 22.6	104	31.7	118	36.1	5	HD23 22.6	104	31.7	118	36.1
6	HD23 22.6	124	37.7	138	42.1	6	HD23 22.6	124	37.7	138	42.1
7	HD23 22.6	143	43.7	158	48.1	7	HD23 22.6	143	43.7	158	48.1
8	HD23 22.6	163	49.7	177	54.1	8	HD23 22.6	163	49.7	177	54.1
9	HD23 22.6	183	55.7	197	60.1	9	HD23 22.6	183	55.7	197	60.1
10	HD23 22.6	202	61.7	217	66.1	10	HD23 22.6	202	61.7	217 <sup>1</sup>	66.1 <sup>1</sup>
11	HD23 22.6	222	67.7	236	72.1	11	HD23 22.6	222 <sup>1</sup>	67.7 <sup>1</sup>	—	—
12	HD23 22.6	242	73.7	256	78.1						
13	HD23 22.6	261	79.7	276 <sup>1</sup>	84.1 <sup>1</sup>						
14	HD23 22.6	281 <sup>1</sup>	85.7 <sup>1</sup>	—	—						

<sup>1</sup> Top climbing unit should be removed or lowered to base of crane prior to operating. Additional operating restrictions may apply; please consult crane manual or contact Morrow for information.

<sup>2</sup> Maximum out-of-service wind speed is 94 mph (151 km/h).

## Counterweights

276' Jib	259' Jib	243' Jib	226' Jib	210' Jib	194' Jib	177' Jib	161' Jib	128' Jib
AAAAACCC			AAAAAAA	AAAAAAC		AAAAACC	AAAACCC	AAAAA
55,890 lbs			55,090 lbs	52,730 lbs		50,380 lbs	48,020 lbs	39,350 lbs
25 350 kg			24 990 kg	23 920 kg		22 850 kg	21 780 kg	17 850 kg

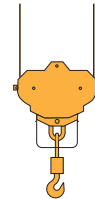
**NOTE!** Counterweight information above applies to both 2-part and 4-part operation. Weight of the A Block is 7,870 lbs (3,570 kg). Weight of the B block is 5,510 lbs (2 500 kg). Counterweights must be installed from rear to front, i.e. towards the tower. It is recommended that the weight of each counterweight be verified before installation. Counterweight figures displayed in the chart above are for crane with hoist unit 67 AFC 100 Vector. If another hoist unit is installed, refer to the Terex-Comedil 561A-20 Operation Manual or contact Morrow Equipment.

# Comedil CTT 561A-20

## Radius and Capacities

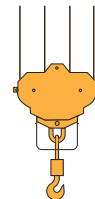
### 2-Part Operation

Hook Radius	Maximum Radius with Maximum Load	ft m	16 5	33 10	46 14	62 19	79 24	95 29	112 34	128 39	144 44	161 49	177 54	194 59	210 64	226 69	243 74	259 79	276 84
276 ft 84m	22,045 lbs – 93 ft 10 000 kg – 28.2m	lbs kg	22,045 10 000	22,045 10 000	22,045 10 000	22,045 10 000	22,045 10 000	20,460 9 280	16,840 7 640	14,680 6 660	12,540 5 690	10,870 4 930	9,500 4 310	8,400 3 810	7,450 3 380	6,660 3 020	5,970 2 710	5,380 2 440	4,850 2 200
259 ft 79m	22,045 lbs – 110 ft 10 000 kg – 33.4m	lbs kg	22,045 10 000	22,045 10 000	22,045 10 000	22,045 10 000	22,045 10 000	22,045 10 000	20,790 9 430	18,190 8 250	15,630 7 090	13,620 6 180	11,990 5 440	10,670 4 840	9,550 4 330	8,600 3 900	7,760 3 520	7,050 3 200	
243 ft 74m	22,045 lbs – 128 ft 10 000 kg – 39.1m	lbs kg	22,045 10 000	22,045 10 000	22,045 10 000	22,045 10 000	22,045 10 000	22,045 10 000	22,045 10 000	22,045 10 000	19,140 8 680	16,780 7 610	14,880 6 750	13,320 6 040	11,990 5 440	10,890 4 940	9,920 4 500		
226 ft 69m	22,045 lbs – 142 ft 10 000 kg – 43.4m	lbs kg	22,045 10 000	22,045 10 000	22,045 10 000	22,045 10 000	22,045 10 000	22,045 10 000	22,045 10 000	22,045 10 000	21,690 9 840	19,090 8 660	17,000 7 710	15,260 6 920	13,800 6 260	12,570 5 700			
210 ft 64m	22,045 lbs – 154 ft 10 000 kg – 46.9m	lbs kg	22,045 10 000	22,045 10 000	22,045 10 000	22,045 10 000	22,045 10 000	22,045 10 000	22,045 10 000	22,045 10 000	22,045 10 000	22,045 10 000	20,940 9 500	18,670 8 470	16,800 7 620	15,210 6 900			
194 ft 59m	22,045 lbs – 164 ft 10 000 kg – 49.9m	lbs kg	22,045 10 000	22,045 10 000	22,045 10 000	22,045 10 000	22,045 10 000	22,045 10 000	22,045 10 000	22,045 10 000	22,045 10 000	22,045 10 000	22,045 10 000	20,080 9 110	18,080 8 200				
177 ft 54m	22,045 lbs – 177 ft 10 000 kg – 54m	lbs kg	22,045 10 000	22,045 10 000	22,045 10 000	22,045 10 000	22,045 10 000	22,045 10 000	22,045 10 000	22,045 10 000	22,045 10 000	22,045 10 000	22,045 10 000	22,045 10 000					
161 ft 49m	22,045 lbs – 161 ft 10 000 kg – 49m	lbs kg	22,045 10 000	22,045 10 000	22,045 10 000	22,045 10 000	22,045 10 000	22,045 10 000	22,045 10 000	22,045 10 000	22,045 10 000	22,045 10 000	22,045 10 000	22,045 10 000					
128 ft 39m	22,045 lbs – 128 ft 10 000 kg – 39m	lbs kg	22,045 10 000	22,045 10 000	22,045 10 000	22,045 10 000	22,045 10 000	22,045 10 000	22,045 10 000	22,045 10 000	22,045 10 000	22,045 10 000	22,045 10 000						



### 4-Part Operation

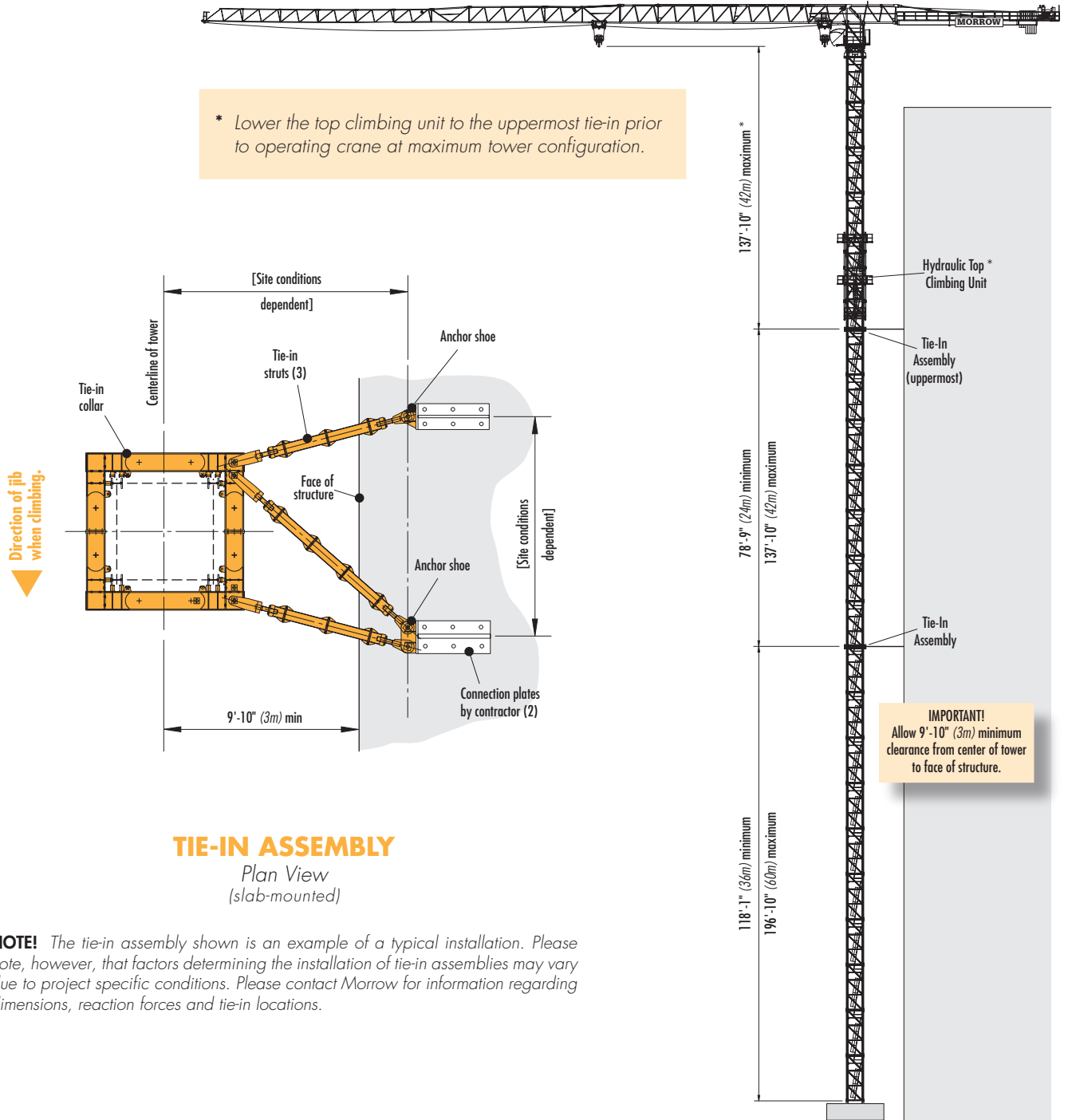
Hook Radius	Maximum Radius with Maximum Load	ft m	16 5	33 10	46 14	62 19	79 24	95 29	112 34	128 39	144 44	161 49	177 54	194 59	210 64	226 69	243 74	259 79	276 84
276 ft 84m	44,090 lbs – 49 ft 20 000 kg – 14.8m	lbs kg	44,090 20 000	44,090 20 000	44,090 20 000	30,380 13 780	22,860 10 370	18,010 8 170	14,590 6 620	12,520 5 680	10,490 4 760	8,880 4 030	7,580 3 440	6,500 2 950	5,600 2 540	4,830 2 190	4,170 1 890	3,590 1 630	3,090 1 400
259 ft 79m	44,090 lbs – 58 ft 20 000 kg – 17.6m	lbs kg	44,090 20 000	44,090 20 000	44,090 20 000	37,770 17 130	28,700 13 020	22,860 10 370	18,760 8 510	16,250 7 370	13,800 6 260	11,860 5 380	10,300 4 670	9,020 4 090	7,940 3 600	7,010 3 180	6,190 2 810	5,510 2 500	
243 ft 74m	44,090 lbs – 68 ft 20 000 kg – 20.6m	lbs kg	44,090 20 000	44,090 20 000	44,090 20 000	44,090 20 000	34,970 15 860	28,040 12 720	23,190 10 520	20,260 9 190	17,350 7 870	15,080 6 840	13,230 6 000	11,680 5 300	10,410 4 720	9,330 4 230	8,380 3 800		
226 ft 69m	44,090 lbs – 75 ft 20 000 kg – 22.9m	lbs kg	44,090 20 000	44,090 20 000	44,090 20 000	44,090 20 000	39,680 18 000	32,010 14 520	26,630 12 080	23,370 10 600	20,150 9 140	17,610 7 990	15,560 7 060	13,870 6 290	12,460 5 650	11,240 5 100			
210 ft 64m	44,090 lbs – 80 ft 20 000 kg – 24.5m	lbs kg	44,090 20 000	44,090 20 000	44,090 20 000	44,090 20 000	43,140 19 570	34,900 15 830	29,120 13 210	25,620 11 620	22,160 10 050	19,440 8 820	17,240 7 820	15,410 6 990	13,890 6 300				
194 ft 59m	44,090 lbs – 87 ft 20 000 kg – 26.5m	lbs kg	44,090 20 000	44,090 20 000	44,090 20 000	44,090 20 000	44,090 20 000	38,270 17 360	32,030 14 530	28,240 12 810	24,490 11 110	21,540 9 770	19,160 8 690	17,200 7 800					
177 ft 54m	44,090 lbs – 97 ft 20 000 kg – 29.7m	lbs kg	44,090 20 000	44,090 20 000	44,090 20 000	44,090 20 000	44,090 20 000	44,090 20 000	36,550 16 580	32,280 14 640	28,060 12 730	24,740 11 220	22,050 10 000						
161 ft 49m	44,090 lbs – 103 ft 20 000 kg – 31.4m	lbs kg	44,090 20 000	44,090 20 000	44,090 20 000	44,090 20 000	44,090 20 000	44,090 20 000	39,000 17 690	34,460 15 630	29,980 13 600	26,460 12 000							
128 ft 39m	44,090 lbs – 104 ft 20 000 kg – 31.7m	lbs kg	44,090 20 000	44,090 20 000	44,090 20 000	44,090 20 000	44,090 20 000	44,090 20 000	39,420 17 880	34,830 15 800									



# Comedil CTT 561A-20

## Tie-in Configuration

\* Lower the top climbing unit to the uppermost tie-in prior to operating crane at maximum tower configuration.



### TIE-IN ASSEMBLY

Plan View  
(slab-mounted)

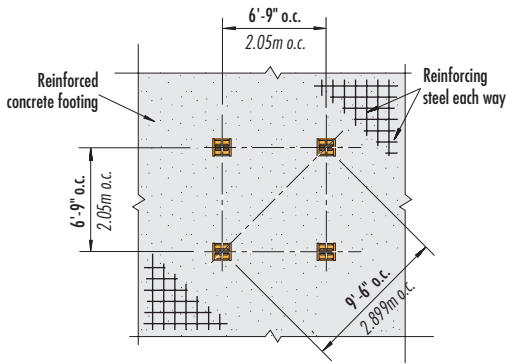
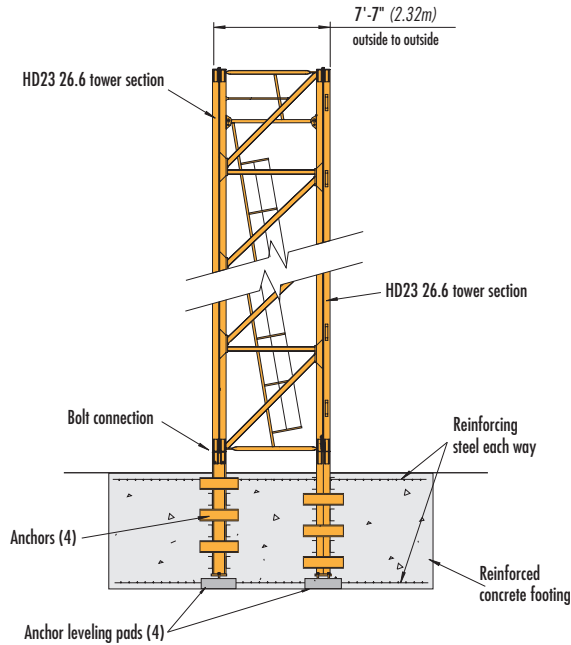
**NOTE!** The tie-in assembly shown is an example of a typical installation. Please note, however, that factors determining the installation of tie-in assemblies may vary due to project specific conditions. Please contact Morrow for information regarding dimensions, reaction forces and tie-in locations.

**IMPORTANT!** Please consult crane operation manual before erecting, operating, climbing, servicing and dismantling.

**TOP CLIMBING**  
with HD23 22.6 Tower Sections  
tied to structure

# Comedil CTT 561A-20

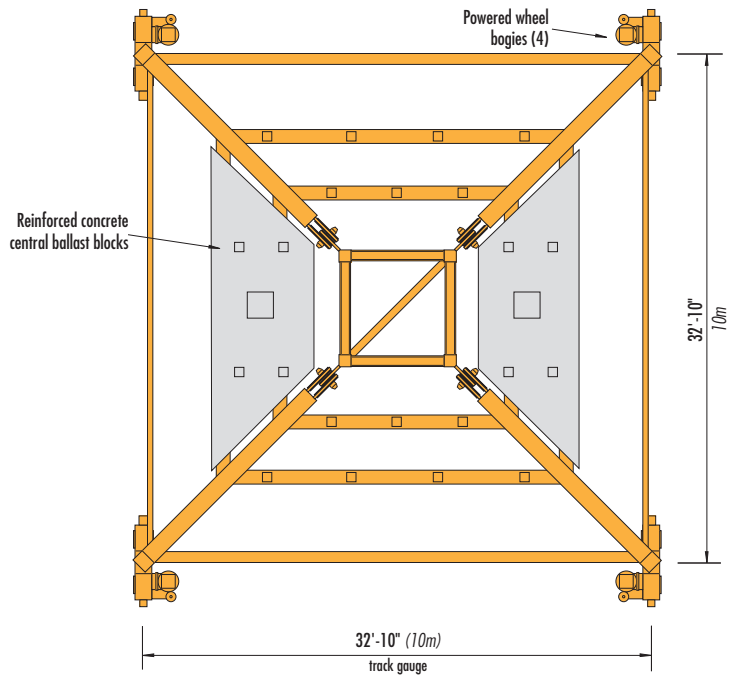
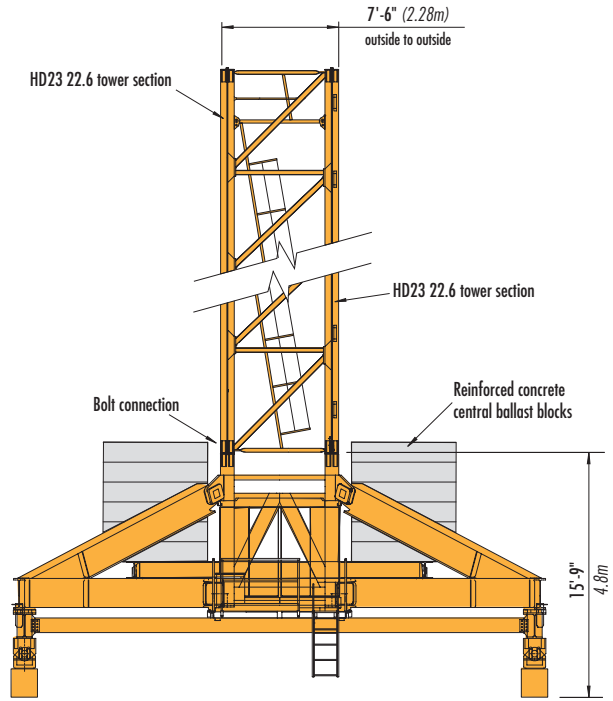
## Foundation/Undercarriage Details



with HD23 26.6 Tower Sections  
(typical)

**NOTE!** The configurations shown above are examples of typical static and rail-traveling installations. It should be noted that factors determining these installations may vary due to project specific conditions. Alternate configuration are available.

Please consult the CTT 561A-20 operation manual or contact Morrow for information and recommendations.



with Rail-traveling undercarriage  
(typical)

# Comedil CTT 561A-20

## Hoist Speed and Capacity

Hoist Unit	2 - Part Line				
67 AFC 100 F18 (Vector)  90 hp (67 kW) AC hoist unit Variable frequency drive (VFD) 5-speed gearbox LEBUS™ drum   2P - 460 4P - 230	Gear	Capacity	Hook Speed	Capacity	Hook Speed
	1	up to 22,045 lbs	@ 112 fpm	up to 10 000 kg	@ 34 m/min
	2	up to 17,640 lbs	@ 135 fpm	up to 8 000 kg	@ 41 m/min
	3	up to 13,230 lbs	@ 177 fpm	up to 6 000 kg	@ 54 m/min
	4	up to 8,820 lbs	@ 253 fpm	up to 4 000 kg	@ 77 m/min
	5	up to 5,290 lbs	@ 387 fpm	up to 2 400 kg	@ 118 m/min
	4 - Part Line				
	1	up to 44,090 lbs	@ 56 fpm	up to 20 000 kg	@ 17 m/min
	2	up to 35,280 lbs	@ 68 fpm	up to 16 000 kg	@ 20.5 m/min
	3	up to 26,460 lbs	@ 89 fpm	up to 12 000 kg	@ 27 m/min
4	up to 17,640 lbs	@ 127 fpm	up to 8 000 kg	@ 38.5 m/min	
5	up to 10,580 lbs	@ 194 fpm	up to 4 800 kg	@ 59 m/min	

**NOTE!** Capacities and line speeds indicated will vary depending on the amount of hoist rope installed. This crane model may be equipped with a hoist unit other than that specified in the data above. To verify, check the serial number of the crane and refer to the Comedil CTT 561A-20 Operation Manual for additional information.

## Motor Information

Drive Unit	Horsepower	Kilowatts	Speed	
Swing (SSR 4 4 80)	4 x 8 hp	4 x 6 kW	0.73 rpm	
Trolley (DVF 5 11)	14.7 hp	11 kW	0 - 330 fpm	0 - 100 m/min
Travelling	Information available upon request			

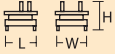




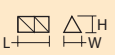

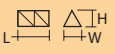
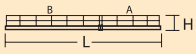
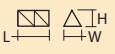



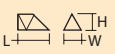

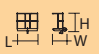

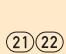


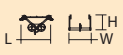
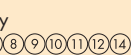


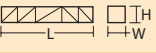
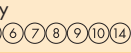
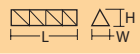
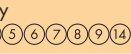
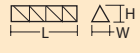
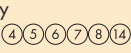
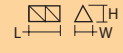
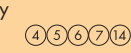
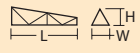
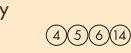


## Power Requirements

- 480 V phase-phase, 277 V each phase to ground with 120° phase shift between phases. Do not use an Open-Delta supply.
- 3-phase, 60 Hz power supply plus ground wire.
- Static: 230 Amperes – 160 kVA
- Travelling: (Contact Morrow for power requirements.)

Specifications subject to change without notice. For other configurations and specifications, contact Morrow Equipment.

# Comedil CTT 561A-20

**NOTE!** Weights and dimensions are approximate. Scale all components before installing. Please consult Comedil CTT561A-20 Operations Manual before erecting, operating, servicing and dismantling crane or crane components. Specifications are subject to change without prior notification. Contact Morrow Equipment for additional information.

Description	Dimensions L x W x H	Weight	Description	Dimensions L x W x H	Weight
Slewing Assembly <sup>1</sup> Complete 	7'-7" x 9'-9" x 7'-4" 2.32m x 2.96m x 2.24m	25,350 lbs 11 500 kg	Jib Section <sup>7</sup> 	17'-4" x 6'-2" x 7'-2" 5.28m x 1.87m x 2.18m	1,980 lbs 900 kg
Cab Tower Section <sup>2</sup> 	10'-7" x 8'-2" x 6'-3" 3.23m x 2.5m x 1.9m	6,720 lbs 3 050 kg	Jib Section <sup>8</sup> 	17'-3" x 6'-2" x 6'-1" 5.25m x 1.87m x 1.86m	1,720 lbs 780 kg
Operator Cab <sup>3</sup> 	17'-11" x 7'-1" x 8'-10" 5.45m x 2.16m x 2.69m	4,410 lbs 2 000 kg	Jib Section <sup>9</sup> 	17'-2" x 6'-2" x 6'-1" 5.22m x 1.87m x 1.86m	2,070 lbs 940 kg
AC Hoist Unit (VFD) <sup>4</sup> 90 hp (67 kW) 	10'-10" x 7'-7" x 7'-9" 3.3m x 2.3m x 2.37m	10,300 lbs 4 670 kg	Jib Section <sup>10</sup> 	17'-0" x 6'-2" x 6'-1" 5.19m x 1.87m x 1.86m	1,150 lbs 520 kg
Counterjib <sup>5</sup> 2-part 	61'-8" x 11'-9" x 3'-7" 18.8m x 3.58m x 1.1m	21,800 lbs 9 890 kg	Jib Section <sup>11</sup> 	16'-11" x 6'-2" x 6'-1" 5.16m x 1.87m x 1.86m	1,000 lbs 452 kg
Tower Section <sup>2</sup> HD23 22.6 	19'-8" x 7'-6" x 7'-6" 6m x 2.28m x 2.28m	10,640 lbs 4 825 kg	Jib Section <sup>12</sup> 	16'-11" x 6'-2" x 5'-10" 5.16m x 1.87m x 1.77m	840 lbs 380 kg
Tower Section <sup>2</sup> HD23 26.6 	19'-8" x 7'-8" x 7'-7" 6m x 2.34m x 2.32m	14,275 lbs 6 475 kg	Jib Section <sup>13</sup> 	16'-11" x 6'-2" x 5'-10" 5.16m x 1.87m x 1.77m	720 lbs 325 kg
Top Climbing <sup>6</sup> Unit 	38'-1" x 9'-7" x 9'-2" 11.6m x 2.92m x 2.8m	31,970 lbs 14,500 kg	Jib Tip <sup>14</sup> 	7'-0" x 3'-10" x 5'-3" 2.13m x 1.18m x 1.61m	595 lbs 270 kg
Counterweight Block A1 	4'-8" x 11" x 12'-4" 1.43m x 0.28m x 3.75m	7,870 lbs 3 570 kg	Jib Assembly <sup>7</sup> Part 1 	65'-7" x 6'-2" x 8'-4" 20m x 1.87m x 2.54m	24,430 lbs 11 080 kg
Counterweight Block C1 	4'-8" x 11" x 8'-8" 1.43m x 0.28m x 2.64m	5,510 lbs 2 500 kg	279-ft (85m) Jib Assembly Part 2 	198'-2" x 6'-2" x 8'-2" 60.4m x 1.87m x 2.5m	22,710 lbs 10 300 kg
Trolley (20t) 	7'-10" x 7'-6" x 4'-9" 2.38m x 2.29 x 1.45m	1,690 lbs 765 kg	262-ft (80m) Jib Assembly Part 2 	181'-9" x 6'-2" x 8'-2" 55.4m x 1.87m x 2.5m	22,045 lbs 10 000 kg
Hook Block (without cheek plates) 	5'-3" x 2'-0" x 5'-5" 1.59m x 0.6m x 1.65m	1,860 lbs 845 kg	246-ft (75m) Jib Assembly Part 2 	165'-8" x 6'-2" x 8'-2" 50.5m x 1.87m x 2.5m	21,165 lbs 9 600 kg
Jib Section <sup>23</sup> (with trolley winch) 	39'-4" x 8'-4" x 8'-4" 12m x 2.54m x 2.54m	24,250 lbs 11 000 kg	230-ft (70m) Jib Assembly Part 2 	149'-3" x 6'-2" x 8'-2" 45.5m x 1.87m x 2.5m	20,280 lbs 9 200 kg
Jib Section <sup>21</sup> <sup>7</sup> 	33'-10" x 6'-2" x 8'-4" 10.3m x 1.87m x 2.54m	10,800 lbs 4 900 kg	213-ft (65m) Jib Assembly Part 2 	132'-10" x 6'-2" x 8'-2" 40.5m x 1.87m x 2.5m	19,180 lbs 8 700 kg
Jib Section <sup>22</sup> <sup>7</sup> 	33'-11" x 6'-2" x 8'-2" 10.34m x 1.87m x 2.5m	8,820 lbs 4 000 kg	197-ft (60m) Jib Assembly Part 2 	116'-6" x 6'-2" x 8'-2" 35.5m x 1.87m x 2.5m	17,860 lbs 8 100 kg
Jib Section <sup>4</sup> 	16'-5" x 6'-2" x 8'-2" 5m x 1.87m x 2.5m	3,970 lbs 1 800 kg	180-ft (55m) Jib Assembly Part 2 	100'-1" x 6'-2" x 8'-2" 30.5m x 1.87m x 2.5m	16,095 lbs 7 300 kg
Jib Section <sup>5</sup> 	32'-10" x 6'-2" x 8'-2" 10m x 1.87m x 2.5m	5,950 lbs 2 700 kg	164-ft (50m) Jib Assembly Part 2 	83'-8" x 6'-2" x 8'-2" 25.5m x 1.87m x 2.5m	14,330 lbs 6 500 kg
Jib Section <sup>6</sup> 	33'-10" x 6'-2" x 7'-2" 10.3m x 1.87m x 2.18m	4,250 lbs 1 930 kg	131-ft (40m) Jib Assembly Part 2 	50'-10" x 6'-7" x 8'-2" 15.5m x 1.87m x 2.5m	9,920 lbs 4 500 kg

<sup>1</sup> Slewing assembly (complete) can be broken down into upper part and lower parts. Slewing assembly plus cab, deck, handrails and panel is 30,200 lbs. (13 700 kg)

<sup>2</sup> Includes ladders, platforms and connecting material.

<sup>3</sup> Cabin assembly weight includes cab, handrails and panel.

<sup>4</sup> Includes hoist winch, frame, platforms, handrails **without** wire rope. Weight of hoist rope alone, based on an installed length of 1,180 ft (360m), is approximately 1,410 lbs (640 kg).

<sup>5</sup> Weight figure shown is for complete counterjib including counterjib part A (8,710 lbs/3950 kg), part B (12,790 lbs/5800 kg), handrails and platforms (310 lbs/140 kg). Dimensions Part A: 23'-6" x 6'-6" x 2'-10"; Part B **without** platforms: 38'-3" x 6'-11" x 3'-7"; Part B **with** platforms: 38'-3" x 11'-9" x 3'-7"

<sup>6</sup> Weight figure shown is for complete climbing unit including all side frames, hydraulics, handrails and platforms.

<sup>7</sup> Jib Part I includes jib sections 21 & 22 plus trolley and hook block. Weight without the hook block is approximately 21,310 lbs (9 665 kg).



**Morrow Equipment**  
C O M P A N Y, L. L. C.

3218 Pringle Road SE • P O Box 3306 • Salem, Oregon 97302-0306 USA

503 585 5721 • Fax 503 363 1172 • info@morrow.com • www.morrow.com

Atlanta, GA • Myrtle Beach, SC • Chicago, IL • Denver, CO • Honolulu, HI • Houston, TX • Los Angeles, CA • Las Vegas, NV  
Millwood, NY • St. Louis, MO • San Francisco, CA • Seattle, WA • Miami, FL • Pensacola, FL • Tampa, FL • Washington, DC  
Sydney, Australia • Brisbane, Australia • Wellington, New Zealand • Vancouver, BC, Canada • Toronto, ON, Canada • México DF, México