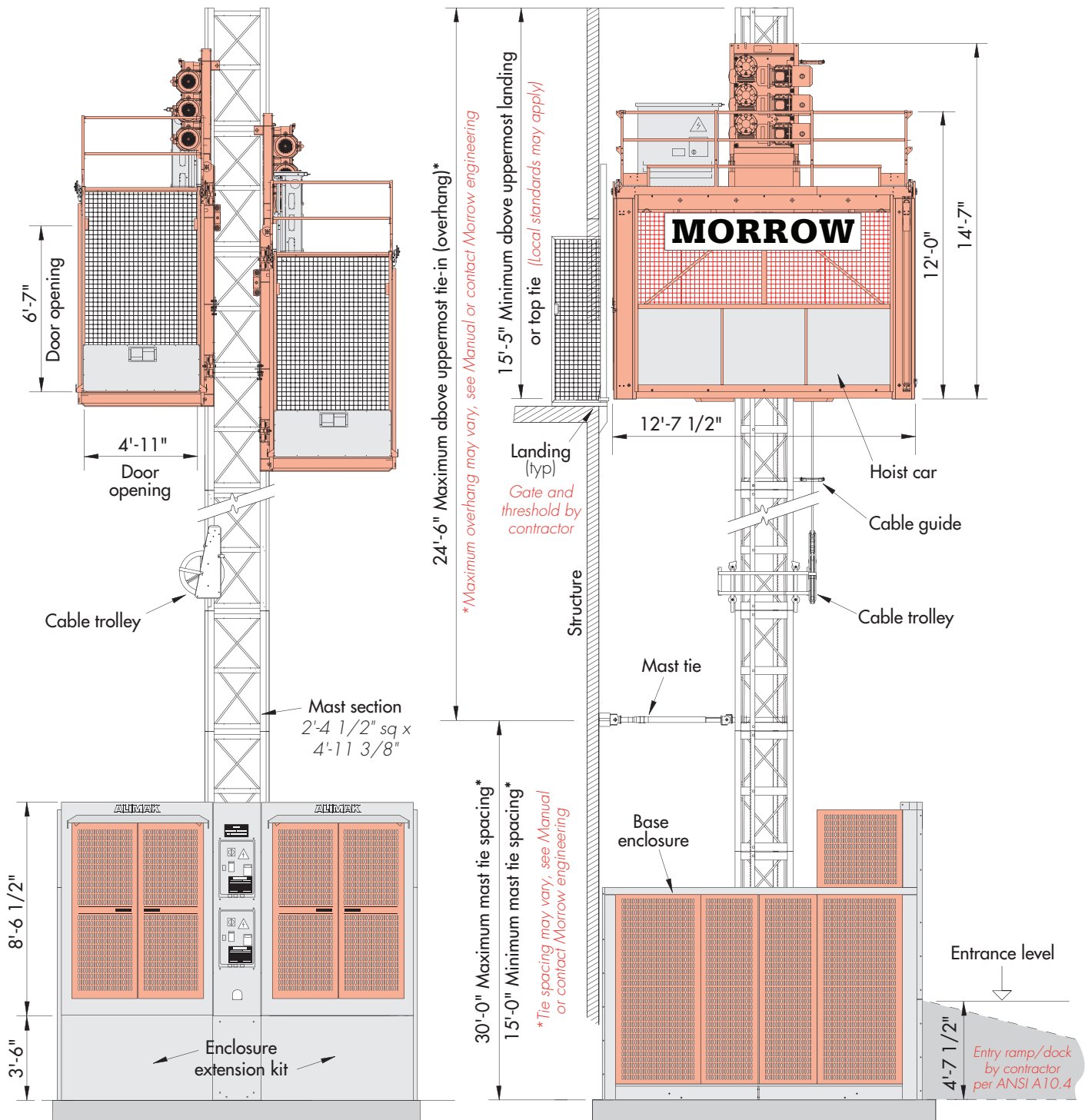


# Alimak FC 6200-12D

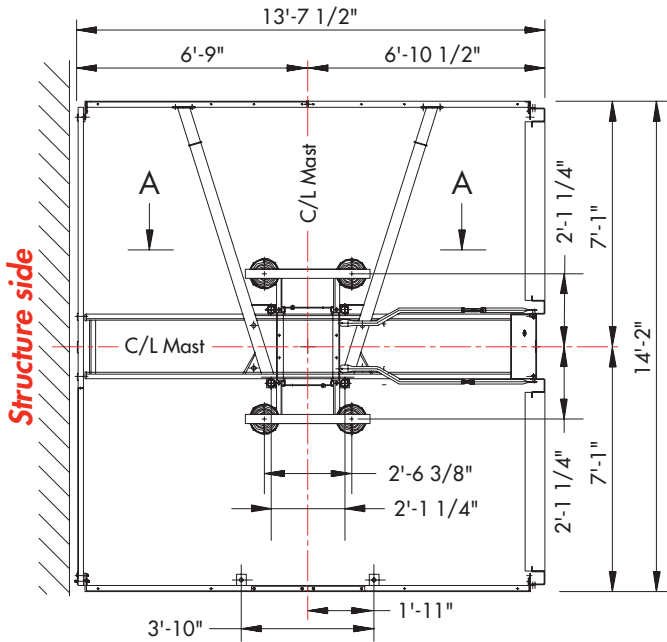
## Model FC 28/37 TD Dual Car Construction Hoist



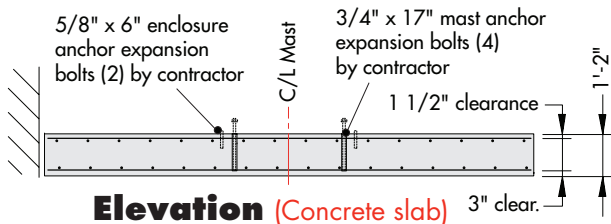
# Morrow Equipment

# Foundation Details

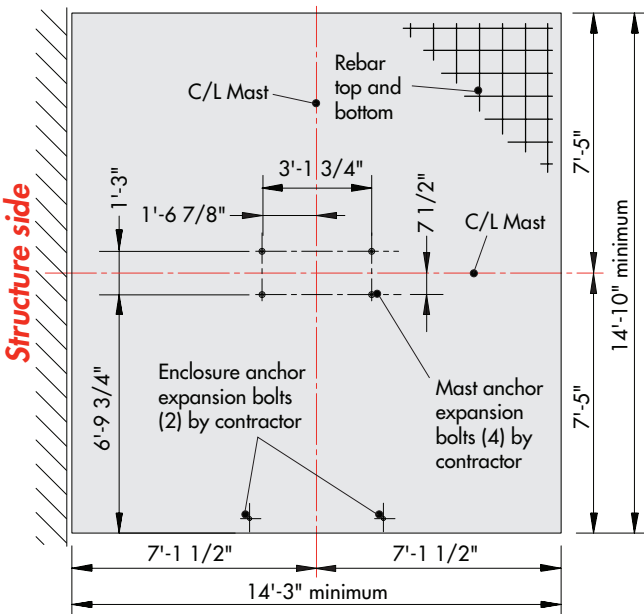
# FC 6200-12 Dual



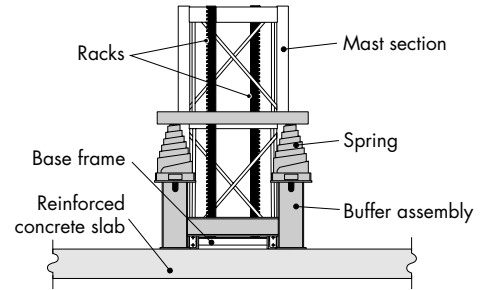
**Plan View (Base enclosure)**



**Elevation (Concrete slab)**

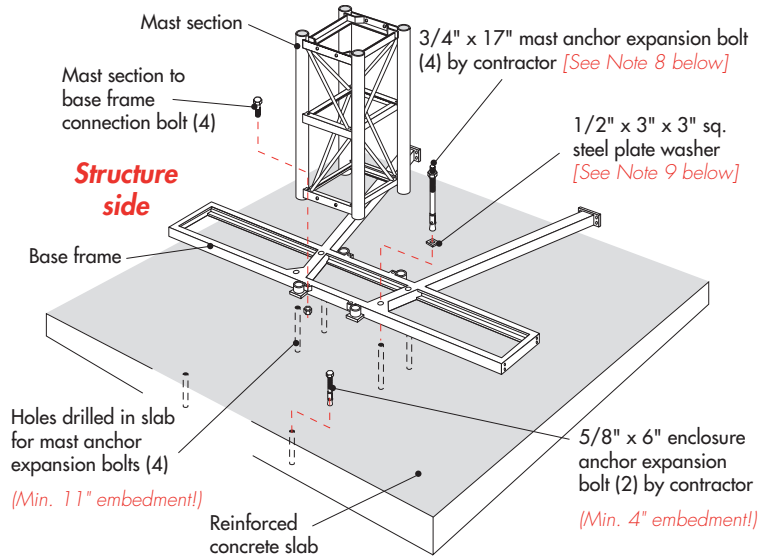


**Plan View (Concrete slab)**



**Mast Base  
Section A-A**

Verify that the use of a slab foundation conforms to all applicable federal, state and local standards and codes PRIOR to foundation installation.



**Foundation Details**

**Note!** Distance from building face to center of mast depends on the type of mast tie installed. Alternate anchoring methods available. Refer to manual or contact Morrow Equipment for information.

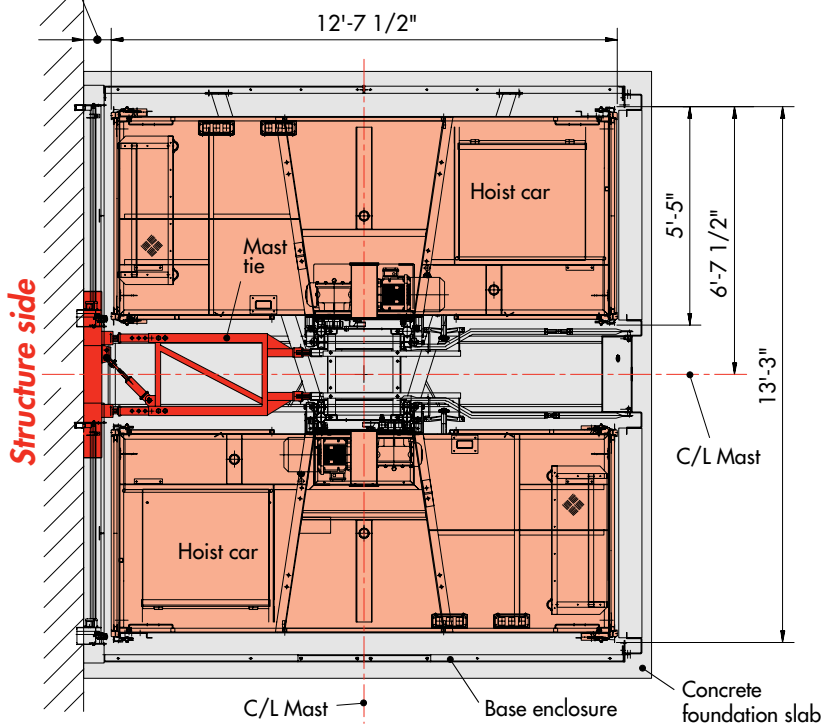
## NOTES

1. Foundation slab: 14'-3" x 14'-10" x 1'-2" with 3,500 psi concrete.
2. Reinforcing bars are #5 ASTM 615-60 10" o.c. each way.
3. Foundation based on 490-foot mast height. For greater heights, contact Morrow engineering department.
4. Foundation pad designed for a minimum soil bearing of 1,000 psf.
5. Alternative pit foundation available. Contact Morrow for information.
6. Refer to the manufacturer's manual before installing, operating, servicing, repairing, jumping or dismantling hoist.
7. For alternate configurations, contact Morrow Equipment for additional information.
8. 3/4" x 17" Williams™ High Tensile Spin-Lock Anchor Bolt and nut assembly. (R1S06C14 Head assembly with ASTM A109/C1045 bolt and nut) or approved equivalent. Bolt by contractor. Install according to bolt manufacturer's requirements. Drill holes 1 3/4-in diameter allowing for 11" embedment. Bolt is also available through Morrow upon request. R1S-type anchor bolts not intended for use at extreme cold temperatures.
9. 1/2" x 3" x 3" sq. washer ASTM A36 steel plate by contractor. Washer also available from Morrow upon request. Drill hole = 13/16" dia. at centerline.

# Tie Details

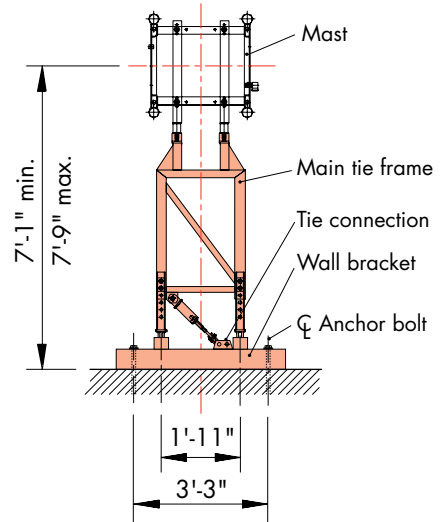
# FC 6200-12 Dual

**IMPORTANT!** ANSI A10.4 11.3 specifies a 1/2" (min.) to 2 1/2" (max.) clearance between car platform sill and landing sill. Verify before installing to assure compliance with appropriate standards, codes and regulations.



**Plan View**

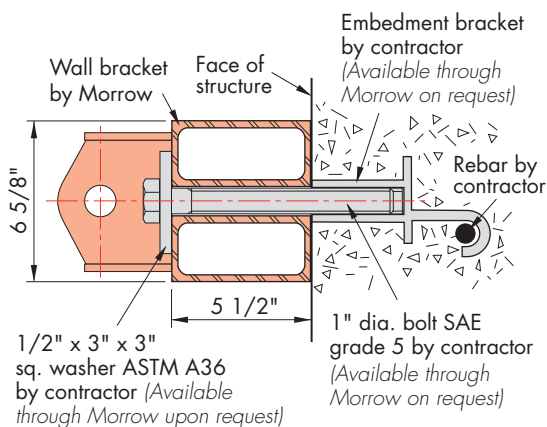
**Note!** Hoist cars are equipped with doors at each end. An optional side door with a 10'-6" x 6'-7" opening is available. Contact Morrow for more information.



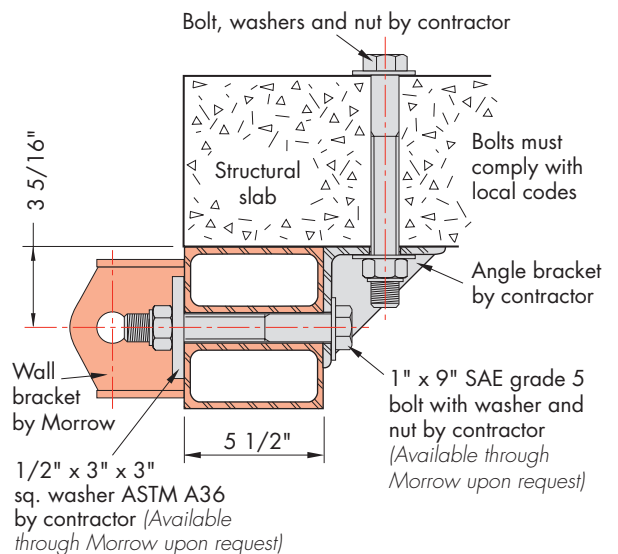
**Standard Mast Tie**  
Plan view

**Note!** Verify all dimensions before mast tie installation. See manual for additional information or contact Morrow.

The tie-in connection shown above is an example of a typical installation. Please note, however, that the actual connection to be installed may differ due to project specific criteria. Tie extensions available upon request. Contact Morrow for information.



**Mast Tie Connection**  
Alternate A - Side view



**Mast Tie Connection**  
Alternate B - Side view

# SPECIFICATIONS

## Alimak® Personnel and Material Hoist Dual Car Model Scando FC 6200-12D

### GENERAL

Load capacity .....	6,200 lbs (each car)	Max. height on standard masts .....	490'
Number of passengers .....	30 (each car)	Max. freestanding mast height .....	30'-0"
Car inside dimensions (approx.)..	12'-2" x 4'-11" x 7'-3"	Maximum mast overhang * .....	24'-6"
Door opening .....	6'-7" x 4'-11"	Maximum mast brace spacing * .....	30'-0"
Mast section length .....	4'-11 3/8"	Minimum mast brace spacing * .....	15'-0"
Speed .....	0 - 157 fpm	Power supply fuses .....	125 Amps (each car)
Motors .....	3 x 15 hp (each car)	Starting current .....	170 Amps (each car)
Power requirement.....	480 Volt - 3 phase - 60 Hz	Power consumption.....	87 kVA (each car)

\* Overhang and mast tie spacing figures may vary, consult Manual or contact Morrow engineering for specific information.

### WEIGHTS

Base enclosure (without cars) .....	3,090 lbs	Hoist car (each).....	5,370 lbs
Base enclosure (with cars) .....	13,845 lbs	Mast section (double racks) .....	341 lbs

### SAFETY FEATURES

- Electronic and mechanical door interlocks on hoist cars and base enclosure doors.
- Safety hooks assure hoist cars are securely attached to mast.
- Automatic stop and final limit switches limit hoist car travel when reaching end positions.
- Phase failure relay system prevents hoist operation unless correct phase sequence is connected.
- Governor prohibits excessive drive speed.
- Main "ON/OFF" switch lockable to prevent unauthorized operation.
- Spring buffers.
- NO counterweights required.

### INSTALLATION

- Adding mast sections does not require special equipment.
- For instructions regarding the installation of the FC 28/37 TD dual car hoist, refer to the manufacturer's manual.
- Specifications and equipment shown are subject to change without prior notification.
- Drawings are for illustrative purposes only. Do not scale.
- This product must be used in a safe manner. Furthermore, the use of this product and its components must be in conformity with manufacturer's specifications and in compliance with all applicable standards, codes, regulations, etc.

Please refer to manufacturer's manual when installing, operating, servicing, repairing, jumping or dismantling hoist. This datasheet contains information for "typical" FC 6200-12D installation, i.e., configured for car on left-hand side of mast (when viewing hoist from side opposite structure). For alternate configurations and special applications, contact Morrow Equipment for information.



## Morrow Equipment

C O M P A N Y, L. L. C.

3218 Pringle Road SE • P O Box 3306 • Salem, Oregon 97302-0306 USA  
Tel. 503.585.5721 • Fax. 503.363.1172 • www.morrow.com

The American home of  
**LIEBHERR**  
TOWER CRANES

Atlanta, GA • Charlotte, NC • Chicago, IL • Denver, CO • Honolulu, HI • Houston, TX • Los Angeles, CA • Millwood, NY • Milwaukee, WI  
Pensacola, FL • St. Louis, MO • San Francisco, CA • Dallas, TX • Seattle, WA • Miami, FL • Tampa, FL • Washington, DC  
Sydney, Australia • Brisbane, Australia • Auckland, New Zealand • Wellington, New Zealand • Vancouver, BC, Canada • Toronto, ON, Canada • Mexico City, Mexico