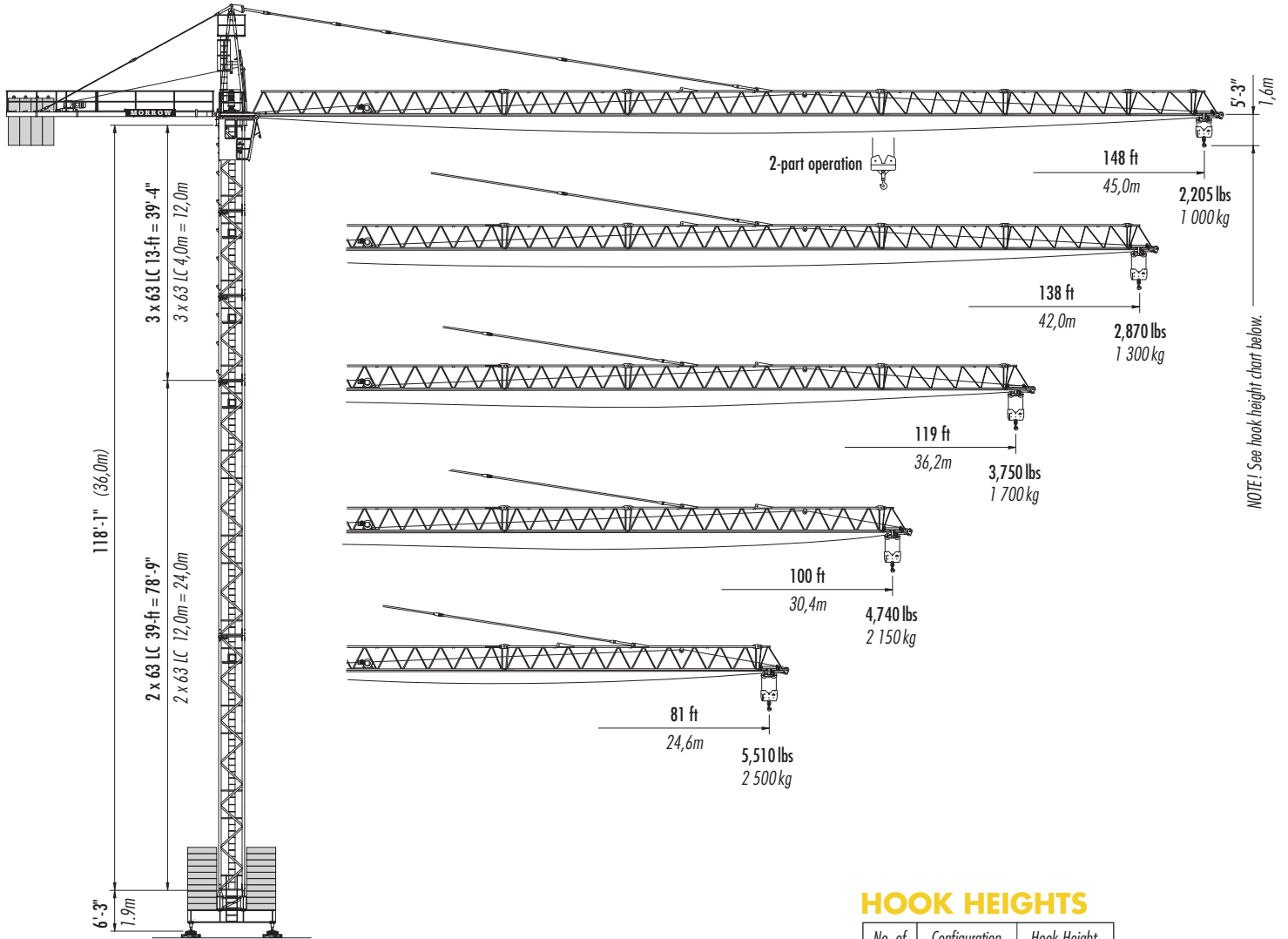


LIEBHERR 63 LC

TOWER CRANE



Configuration I

(stationary)
 on adjustable spindle jacks
 maximum height under hook
 121 ft (36,9m)

STATIONARY
 Freestanding

HOOK HEIGHTS

No. of sections	Configuration I	Hook Height	
		ft	m
1	63 LC - 12m	42.3	12,9
2	63 LC - 12m	81.7	24,9
3	63 LC - 4m	94.8	28,9
4	63 LC - 4m	107.9	32,9
5	63 LC - 4m	121.1	36,9

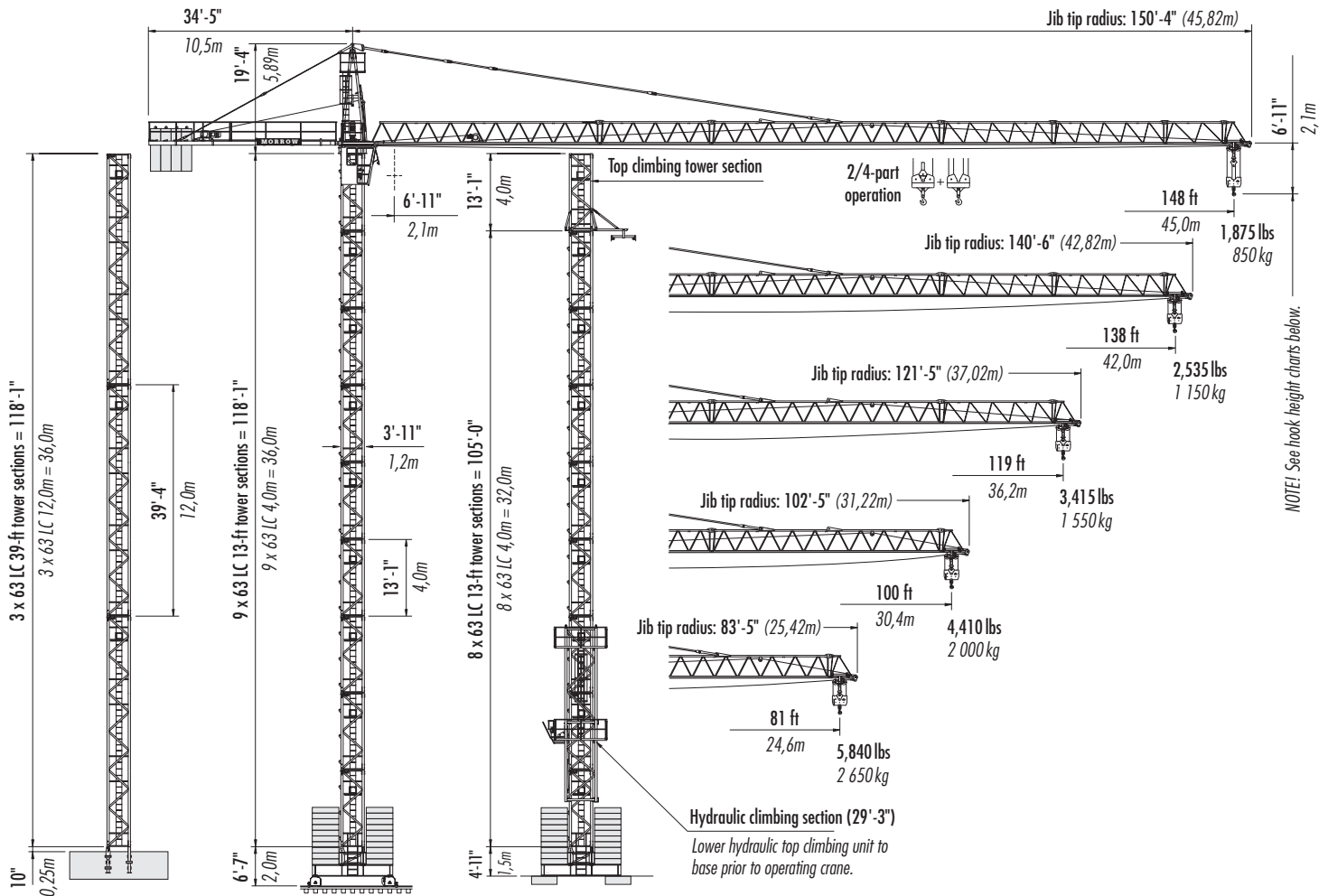
Other tower combinations are possible.
 Contact Morrow for additional information.



Morrow Equipment

Configurations

LIEBHERR 63 LC



Configuration II
(stationary)
on concrete foundation
maximum height
under hook
116 ft (35,3m)

Configuration III
(rail travelling)
maximum height
under hook
121 ft (37,0m)

Configuration IV
(stationary)
on concrete footings
maximum height
under hook
120 ft (36,5m)

IMPORTANT! Please consult crane's operation manual before erecting, operating and dismantling crane.

HOOK HEIGHTS

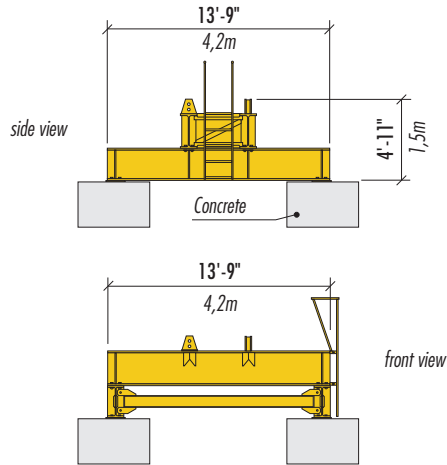
No. of sections	Configuration II	Hook Height		No. of sections	Configuration III	Hook Height		No. of sections	Configuration IV	Hook Height	
		ft	m			ft	m			ft	m
1	63 LC 12m	37.1	11,3	1	63 LC 4m	16.4	5,0	1	63 LC 4m	14.8	4,5
2	63 LC 12m	76.4	23,3	2	63 LC 4m	29.5	9,0	2	63 LC 4m	27.9	8,5
3	63 LC 12m	115.8	35,3	3	63 LC 4m	42.7	13,0	3	63 LC 4m	41.0	12,5
				4	63 LC 4m	55.8	17,0	4	63 LC 4m	54.1	16,5
				5	63 LC 4m	68.9	21,0	5	63 LC 4m	67.3	20,5
				6	63 LC 4m	82.0	25,0	6	63 LC 4m	80.4	24,5
				7	63 LC 4m	95.1	29,0	7	63 LC 4m	93.5	28,5
				8	63 LC 4m	108.3	33,0	8	63 LC 4m	106.6	32,5
				9	63 LC 4m	121.4	37,0	9*	63 LC 4m	119.8	36,5

* Lower hydraulic top climbing unit to base prior to operating crane.

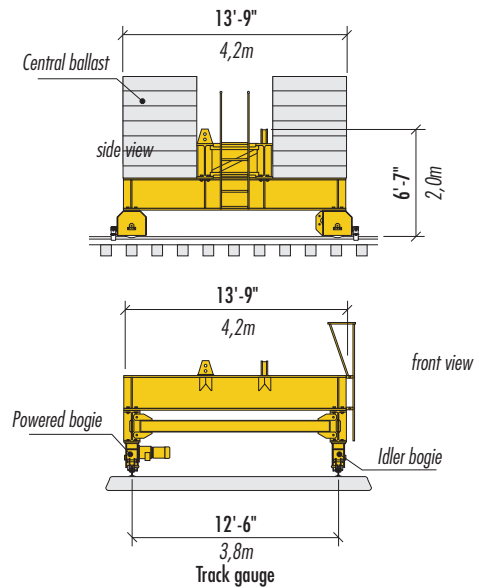
NOTE! Other tower combinations are possible. Contact Morrow Equipment for additional information.

Configurations

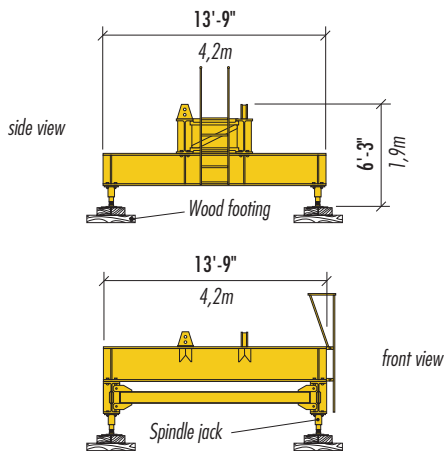
LIEBHERR 63 LC



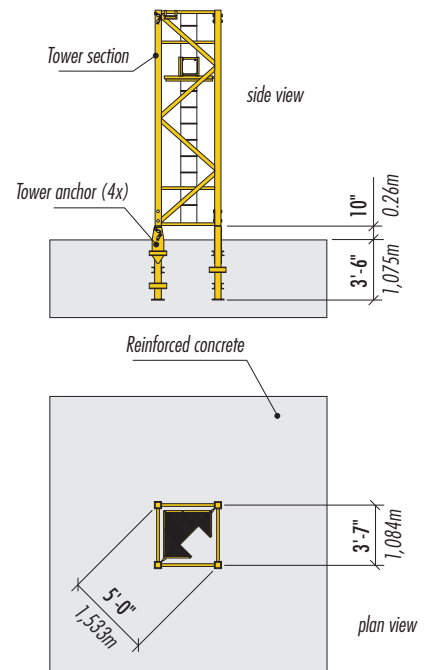
UNDERCARRIAGE DETAILS
on concrete footings



UNDERCARRIAGE DETAILS
on rail travelling base



UNDERCARRIAGE DETAILS
on adjustable spindle (screw) jacks









FOUNDATON DETAILS
with 63 LC tower
on reinforced concrete slab

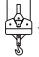
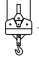
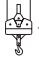
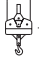
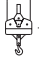
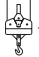
Radius & capacities

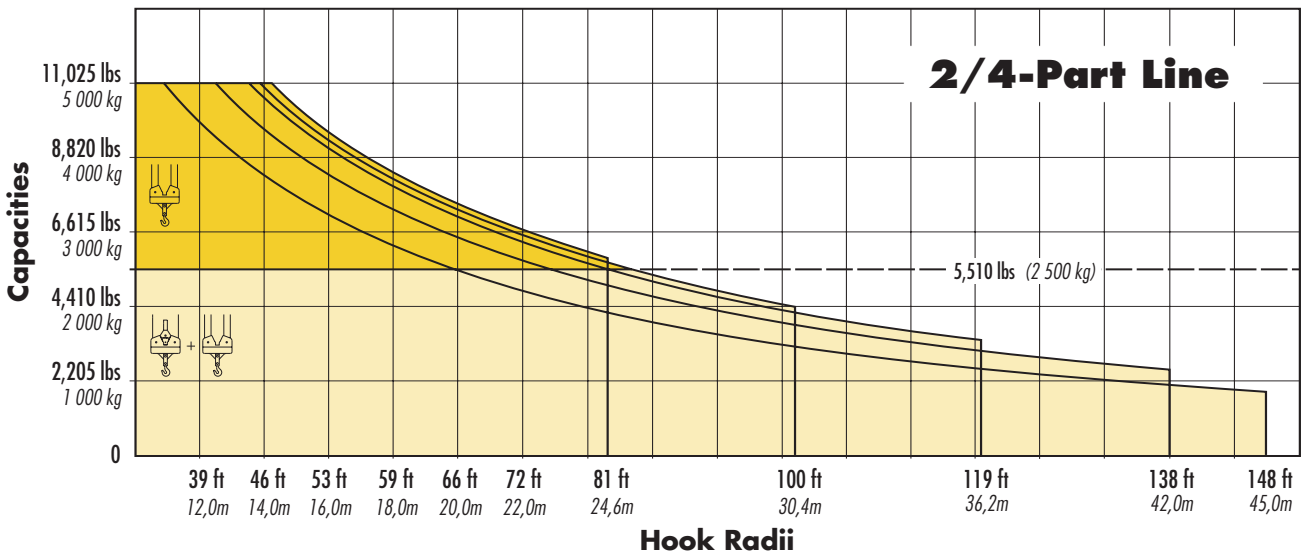
LIEBHERR 63 LC

2-Part Line

Hook reach	Maximum capacity		ft	7	39	46	53	59	66	72	81	92	100	112	119	131	138	148
			m	2,1	12,0	14,0	16,0	18,0	20,0	22,0	24,6	28,0	30,4	34,0	36,2	40,0	42,0	45,0
148 ft 45,0m	5,510 lbs – 67.6 ft 2 500 kg – 20,6m		lbs	5,510	5,510	5,510	5,510	5,510	5,510	5,135	4,520	3,900	3,550	3,110	2,890	2,555	2,400	2,205
			kg	2 500	2 500	2 500	2 500	2 500	2 500	2 330	2 050	1 770	1 610	1 410	1 310	1 160	1 090	1 000
138 ft 42,0m	5,510 lbs – 78.1 ft 2 500 kg – 23,8m		lbs	5,510	5,510	5,510	5,510	5,510	5,510	5,510	5,315	4,585	4,190	3,680	3,415	3,040	2,870	
			kg	2 500	2 500	2 500	2 500	2 500	2 500	2 500	2 410	2 080	1 900	1 670	1 550	1 380	1 300	
119 ft 36,2m	5,510 lbs – 84.3 ft 2 500 kg – 25,7m		lbs	5,510	5,510	5,510	5,510	5,510	5,510	5,510	5,510	5,025	4,585	4,035	3,750			
			kg	2 500	2 500	2 500	2 500	2 500	2 500	2 500	2 500	2 280	2 080	1 830	1 700			
100 ft 30,4m	5,510 lbs – 87.3 ft 2 500 kg – 26,6m		lbs	5,510	5,510	5,510	5,510	5,510	5,510	5,510	5,510	5,205	4,740					
			kg	2 500	2 500	2 500	2 500	2 500	2 500	2 500	2 500	2 360	2 150					
81 ft 24,6m	5,510 lbs – 81.0 ft 2 500 kg – 24,6m		lbs	5,510	5,510	5,510	5,510	5,510	5,510	5,510	5,510							
			kg	2 500	2 500	2 500	2 500	2 500	2 500	2 500	2 500							

2/4-Part Line

Hook reach	Maximum capacity		ft	7	39	46	53	59	66	72	81	92	100	112	119	131	138	148
				m	2,1	12,0	14,0	16,0	18,0	20,0	22,0	24,6	28,0	30,4	34,0	36,2	40,0	42,0
148 ft 45,0m	5,510 lbs – 65.0 ft 2 500 kg – 19,8m		lbs	11,025	9,875	8,290	7,100	6,175	5,445	4,850	4,235	3,595	3,240	2,775	2,560	2,225	2,075	1,875
			kg	5 000	4 480	3 760	3 220	2 800	2 470	2 200	1 920	1 630	1 470	1 260	1 160	1 010	940	850
138 ft 42,0m	5,510 lbs – 74.8 ft 2 500 kg – 22,8m		lbs	11,025	11,025	9,700	8,335	7,275	6,440	5,755	5,025	4,300	3,880	3,350	3,085	2,710	2,535	
			kg	5 000	5 000	4 400	3 780	3 300	2 920	2 610	2 280	1 950	1 760	1 520	1 400	1 230	1 150	
119 ft 36,2m	5,510 lbs – 80.4 ft 2 500 kg – 24,5m		lbs	11,025	11,025	10,560	9,060	7,935	7,010	6,285	5,510	4,720	4,255	3,705	3,415			
			kg	5 000	5 000	4 790	4 110	3 600	3 180	2 850	2 500	2 140	1 930	1 680	1 550			
100 ft 30,4m	5,510 lbs – 86.3 ft 2 500 kg – 26,3m		lbs	11,025	11,025	10,890	9,370	8,180	7,255	6,480	5,690	4,870	4,410					
			kg	5 000	5 000	4 940	4 250	3 710	3 290	2 940	2 580	2 210	2 000					
81 ft 24,6m	5,510 lbs – 81.0 ft 2 500 kg – 24,6m		lbs	11,025	11,025	11,025	9,610	8,400	7,430	6,660	5,840							
			kg	5 000	5 000	5 000	4 360	3 810	3 370	3 020	2 650							



SPECIFICATIONS

LIEBHERR Tower crane model 63 LC

Hoist speeds and capacities

Hoist Unit	WiW 210 MY 300	2-Part line					
19 hp (14 kW) AC hoist unit <ul style="list-style-type: none">• 3-step pole-changing motor• Lebus-type rope drum		Step	Capacity	Line Speed	Capacity	Line Speed	
		1	up to 5,510 lbs	26 fpm	up to 2 500 kg	8 m/min	
		2	up to 5,510 lbs	92 fpm	up to 2 500 kg	28 m/min	
		3	up to 2,425 lbs	184 fpm	up to 1 100 kg	56 m/min	
		4-Part line					
		1	up to 11,025 lbs	13 fpm	up to 5 000 kg	4 m/min	
		2	up to 11,025 lbs	46 fpm	up to 5 000 kg	14 m/min	
		3	up to 5,290 lbs	92 fpm	up to 2 400 kg	28 m/min	

NOTE! Capacities and line speeds indicated will vary depending on the amount of hoist rope installed. This crane model may be equipped with a hoist unit other than that specified in the data above. To verify, check the serial number of the crane and refer to the Liebherr 63 LC Operation Manual for additional information.

Motor information

Drive Unit	Horsepower	Kilowatts	Speeds	
Trolley (2-part operation)	1.3/2.4 hp	1,0/1,8 kW	62/125 fpm	19/38 m/min
Trolley (2/4-part operation)	2.0/4.0 hp	1,5/3,0 kW	69/138 fpm	21/42 m/min
Swing	4.0 hp	3,0 kW	0.8 rpm	
Rail travelling	2 x 2.9 hp	2 x 2,2 kW	66 fpm	20 m/min

Power requirements

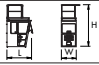


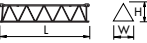
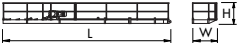
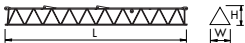


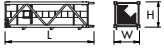

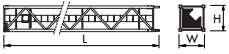

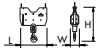


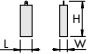
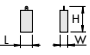

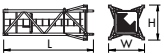

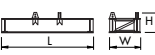

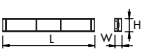
480 V — 3-phase — 60-Hz — 50 Amps — 26 kVA

Subject to changes without prior notice. For additional information, contact Morrow Equipment.

Morrow Equipment Co., L.L.C.

Component list

LIEBHERR 63 LC

Components	Dimensions* L x W x H	Weight*	Components	Dimensions* L x W x H	Weight*
Operator's cab ¹	 6'-2" x 3'-8" x 10'-10" 1,87m x 1,12m x 3,3m	1,325 lbs 600 kg	Jib butt ^①	 38'-11" x 3'-5" x 4'-3" 11,85m x 1,04m x 1,3m	2,360 lbs 1 070 kg
Tower top ²	 19'-4" x 6'-1" x 5'-8" 5,89m x 1,86m x 1,73m	6,040 lbs 2 740 kg	Jib section ^②	 19'-6" x 3'-1" x 4'-0" 5,94m x 0,95m x 1,22m	885 lbs 401 kg
Counterjib ³	 32'-1" x 4'-9" x 4'-7" 9,79m x 1,46m x 1,39m	3,460 lbs 1 570 kg	Jib section ^③	 38'-9" x 3'-1" x 4'-4" 11,8m x 0,95m x 1,32m	1,785 lbs 810 kg
Trolley	 3'-1" x 3'-8" x 2'-0" 0,95m x 1,13m x 0,62m	335 lbs 151 kg	Jib section ^④	 19'-6" x 3'-1" x 4'-0" 5,94m x 0,95m x 1,22m	575 lbs 261 kg
Std. tower section w/climbing lugs	 14'-0" x 3'-11" x 4'-3" 4,27m x 1,2m x 1,3m	2,112 lbs 958 kg	Jib section ^⑤	 19'-6" x 3'-1" x 4'-0" 5,94m x 0,95m x 1,22m	465 lbs 210 kg
Long tower section	 40'-3" x 3'-11" x 3'-11" 12,27m x 1,2m x 1,2m	5,370 lbs 2 435 kg	Jib section ^⑥	 10'-5" x 3'-1" x 4'-0" 3,18m x 0,95m x 1,22m	245 lbs 111 kg
Hook block	 2'-6" x 9" x 3'-3" 0,75m x 0,24m x 0,98m	230 lbs 104 kg	Jib tip section ^⑦	 4'-9" x 3'-5" x 4'-6" 1,45m x 1,04m x 1,37m	175 lbs 80 kg
Hoist unit ⁴	 4'-1" x 4'-0" x 1'-10" 1,25 x 1,23m x 0,55m	990 lbs 450 kg	Jib assembly ^⑥ 148 ft (45,0m)	①②③④⑤⑥⑦ 150'-4" x 3'-5" x 4'-6" 45,82m x 1,04m x 1,37m	8,070 lbs 3 660 kg
Counterweight A	 2'-8" x 1'-8" x 7'-10" 0,81m x 0,52m x 2,4m	4,960 lbs 2 250 kg	Jib assembly ^⑥ 138 ft (42,0m)	①②③④⑤⑦ 140'-6" x 3'-5" x 4'-6" 42,82m x 1,04m x 1,37m	7,805 lbs 3 540 kg
Counterweight B	 2'-8" x 1'-8" x 4'-6" 0,81m x 0,52m x 1,38m	2,645 lbs 1 200 kg	Jib assembly ^⑥ 119 ft (36,2m)	①②③④⑦ 121'-5" x 3'-5" x 4'-6" 37,02m x 1,04m x 1,37m	7,190 lbs 3 260 kg
Central ballast block	 13'-1" x 3'-11" x 9" 4,0m x 1,2m x 0,22m	5,510 lbs 2 500 kg	Jib assembly ^⑥ 100 ft (30,4m)	①②③⑦ 102'-5" x 3'-5" x 4'-6" 31,22m x 1,04m x 1,37m	6,590 lbs 2 990 kg
Climbing section	 14'-0" x 5'-5" x 5'-5" 4,27m x 1,66m x 1,66m	2,470 lbs 1 120 kg	Jib assembly ^⑥ 81 ft (24,6m)	①③⑦ 83'-5" x 3'-5" x 4'-6" 25,42m x 1,04m x 1,37m	5,555 lbs 2 520 kg
Top climbing unit ⁵	 29'-3" x 9'-2" x 10'-10" 8,92m x 2,8m x 3,3m	6,395 lbs 2 900 kg	Undercarriage frame	 13'-6" x 3'-1" x 4'-7" 4,12m x 0,94m x 1,39m	5,680 lbs 2 575 kg
Accessories & wire rope	 —	2,865 lbs 1 300 kg	Undercarriage outrigger (each)	 13'-5" x 1'-0" x 2'-0" 4,1m x 0,3m x 0,6m	2,060 lbs 935 kg

* NOTE! Weights and dimensions are approximate. Verify weights and dimensions of components before lifting.

- ¹ Cab assembly includes operator's cab, operator's desk and access platform with handrails.
- ² Tower top unit includes tower top, electrical panel (S1), pendants, swing motor, slewing ring and slewing ring support.
- ³ Includes counterjib section, hoist unit, pendants and handrails. Does not include wire rope.
- ⁴ 19 hp [14 kW] AC hoist unit. Does not include wire rope.
- ⁵ Top climbing unit consists of tower frame with platforms and handrails, hydraulic unit with ram and support shoes, and ladder.
- ⁶ Jib assemblies consist of jib sections, trolley, trolley drive unit with wire rope, pendant bars and connecting pins.



Morrow Equipment
C O M P A N Y, L. L. C.

3218 Pringle Road SE • P O Box 3306 • Salem, Oregon 97302-0306 USA
Tel. 503.585.5721 • Fax. 503.363.1172 • www.morrowequipment.com

The American home of
LIEBHERR

Atlanta, GA • Charlotte, NC • Chicago, IL • Denver, CO • Honolulu, HI • Houston, TX • Los Angeles, CA • Las Vegas, NV
Millwood, NY • St. Louis, MO • San Francisco, CA • Seattle, WA • Miami, FL • Tampa, FL • Washington, DC
Sydney, Australia • Wellington, New Zealand • Vancouver, BC, Canada • Toronto, ON, Canada • México DF, México