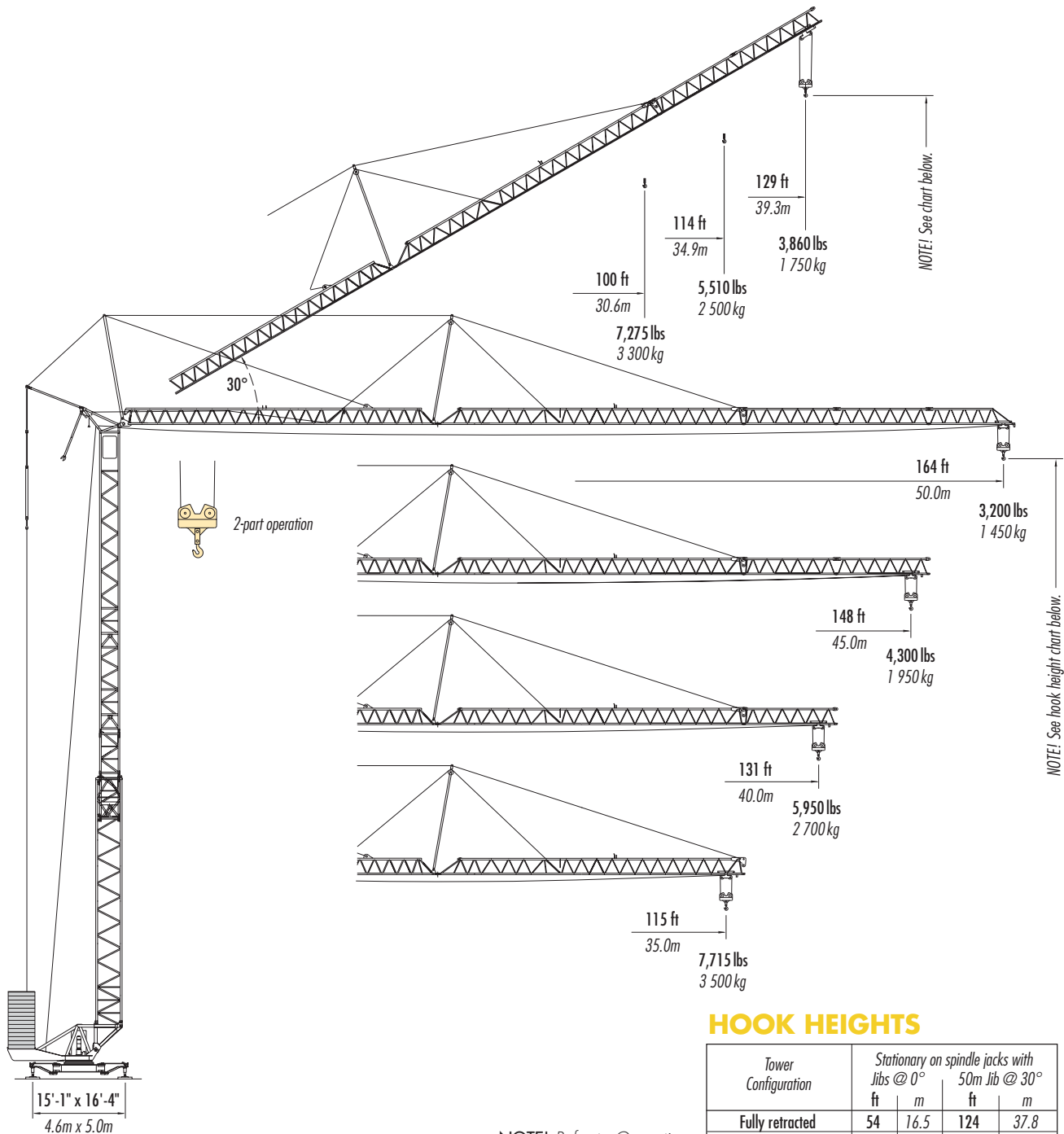


LIEBHERR 120 K

SELF-ERECTING CRANE



HOOK HEIGHTS

Tower Configuration	Stationary on spindle jacks with Jibs @			
	0°		50m Jib @ 30°	
	ft	m	ft	m
Fully retracted	54	16.5	124	37.8
Intermediate position	80	24.4	150	45.7
Fully extended	95	29.0	165	50.3
Fully extended + 1 STS	103	31.4	173	52.7
Fully extended + 2 STS	111	33.8	181	55.1

NOTE! Refer to Operation Manual or contact Morrow Equipment for additional information.

STATIONARY

on outriggers with spindle jacks
maximum hook height: 181 ft (55.1 m)

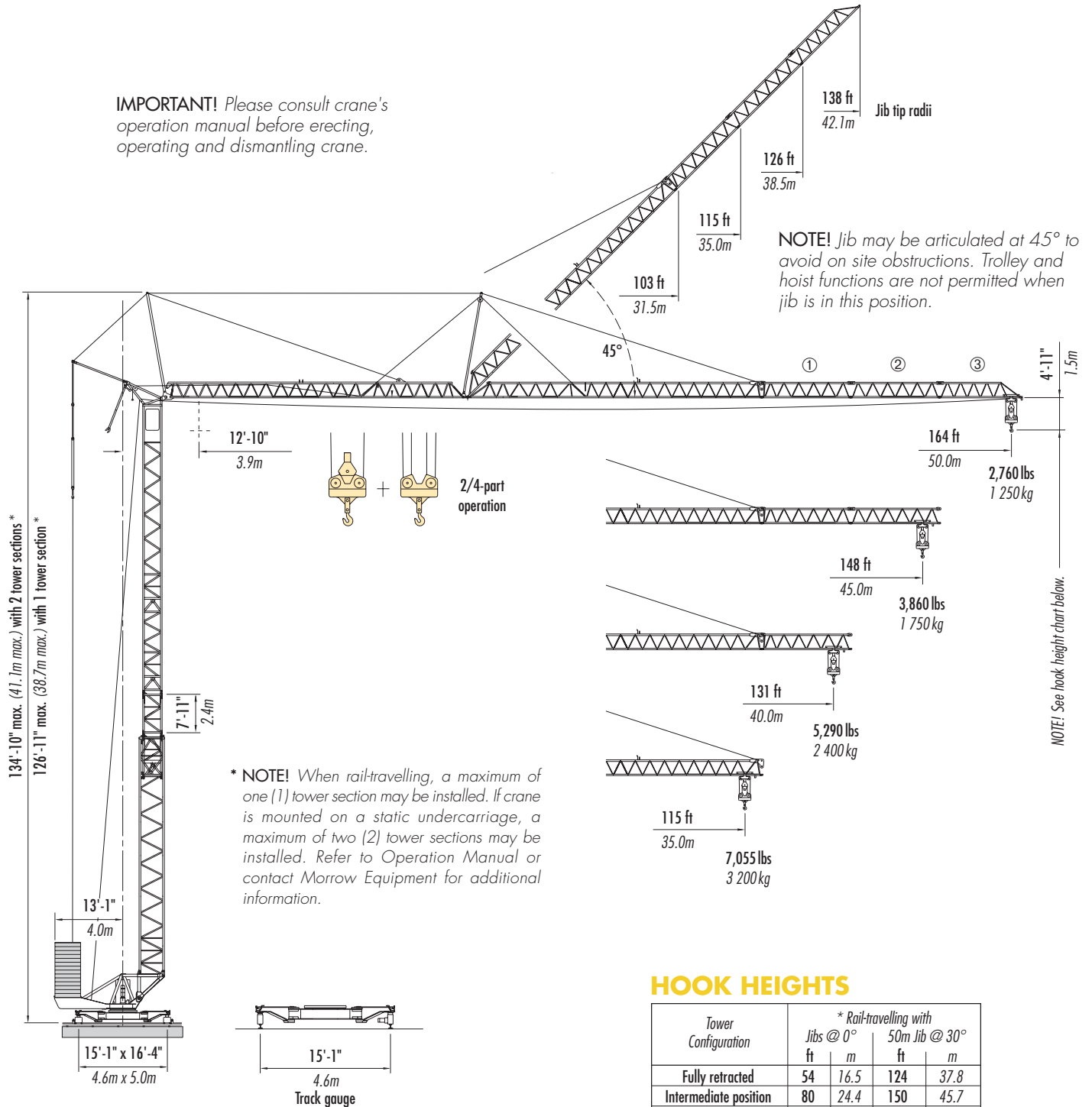


Morrow Equipment

Configurations

LIEBHERR 120 K

IMPORTANT! Please consult crane's operation manual before erecting, operating and dismantling crane.



TRAVELLING

on outriggers with rail bogies

[weight without tower sections:
approximately 62,390 lbs (28 300 kg)]

HOOK HEIGHTS






Tower Configuration	* Rail-travelling with			
	Jibs @ 0°		50m Jib @ 30°	
	ft	m	ft	m
Fully retracted	54	16.5	124	37.8
Intermediate position	80	24.4	150	45.7
Fully extended	95	29.0	165	50.3
Fully extended + 1 STS	103	31.4	173	52.7

NOTE! Refer to Operation Manual or contact Morrow Equipment for additional information.





Radius & capacities

LIEBHERR 120 K

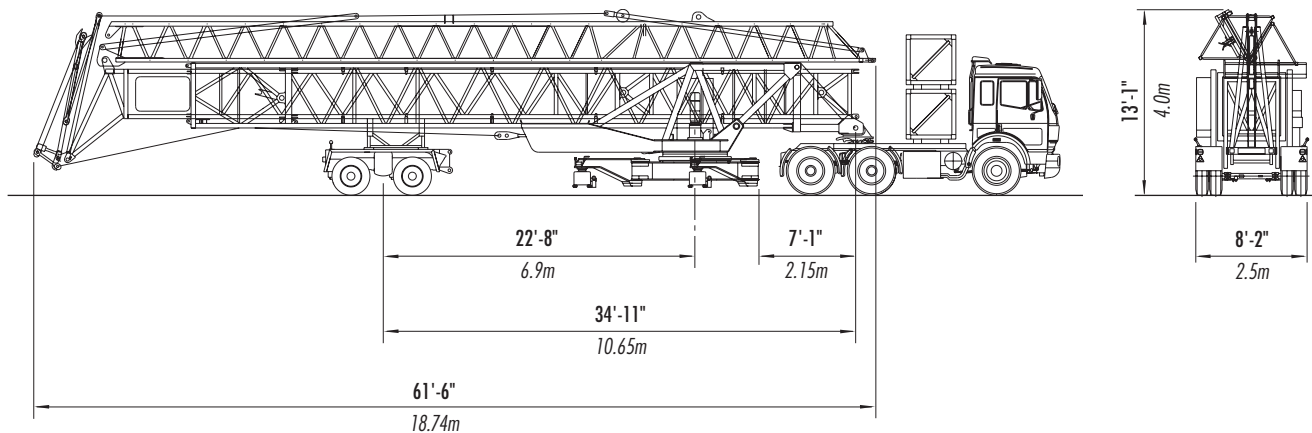
2-Part Line

Hook Radius	Maximum Capacity – Radius		ft	72	85	98	105	108	115	118	121	125	131	135	138	141	148	151	157	164	
			m	22.0	26.0	30.0	32.0	33.0	35.0	36.0	37.0	38.0	40.0	41.0	42.0	43.0	45.0	46.0	48.0	50.0	
164 ft 50.0m	8,820 lbs – 64 ft 4 000 kg – 19.4m		lbs kg	7,540 3 420	6,129 2 780	5,137 2 330	4,740 2 150	4,542 2 060	4,233 1 920	4,079 1 850	3,924 1 780	3,792 1 720	3,571 1 620	3,439 1 560	3,329 1 510	3,241 1 470	3,200 1 450	3,200 1 450	3,200 1 450	3,200 1 450	
148 ft 45.0m	8,820 lbs – 74 ft 4 000 kg – 22.5m		lbs kg	8,820 4 000	7,385 3 350	6,217 2 820	5,732 2 600	5,534 2 510	5,181 2 350	4,960 2 250	4,806 2 180	4,630 2 100	4,343 1 970	4,300 1 950	4,300 1 950	4,300 1 950	4,300 1 950				
131 ft 40.0m	8,820 lbs – 87 ft 4 000 kg – 26.6m		lbs kg	8,820 4 000	8,820 4 000	7,628 3 460	7,077 3 210	6,812 3 090	6,349 2 880	6,129 2 780	5,950 2 700	5,950 2 700	5,950 2 700								
115 ft 35.0m	8,820 lbs – 98 ft 4 000 kg – 29.8m		lbs kg	8,820 4 000	8,820 4 000	8,730 3 960	8,091 3 670	7,715 3 500	7,715 3 500												

2-Part Line with jib @ 30°

Hook Radius	Maximum Capacity – Radius		ft	69	75	82	89	95	100	102	105	108	112	114	115	118	121	125	128	129	
			m	21.0	23.0	25.0	27.0	29.0	30.6	31.0	32.0	33.0	34.0	34.9	35.0	36.0	37.0	38.0	39.0	39.3	
129 ft 39.3m	8,820 lbs – 61 ft 4 000 kg – 18.5m		lbs kg	7,540 3 420	6,680 3 030	5,997 2 720	5,445 2 470	4,960 2 250	4,630 2 100	4,542 2 060	4,365 1 980	4,189 1 900	4,012 1 820	3,880 1 760	3,869 1 755	3,860 1 750	3,860 1 750	3,860 1 750	3,860 1 750	3,860 1 750	3,860 1 750
114 ft 34.9m	8,820 lbs – 73 ft 4 000 kg – 22.1m		lbs kg	8,820 4 000	8,378 3 800	7,540 3 420	6,856 3 110	6,261 2 840	5,864 2 660	5,776 2 620	5,534 2 510	5,510 2 500	5,510 2 500	5,510 2 500							
100 ft 30.6m	8,820 lbs – 82 ft 4 000 kg – 24.9m		lbs kg	8,820 4 000	8,820 4 000	8,752 3 970	7,981 3 620	7,297 3 310	7,275 3 300												

NOTE! Refer to Operation Manual or contact Morrow Equipment for additional information.



TRANSPORTER






fifth-wheel towing unit

[weight: approximately 69,445 lbs (31 500 kg)]

Radius & capacities






LIEBHERR 120 K

2/4-Part Line

Hook Radius	Maximum Capacity – Radius		ft m	72	85	98	105	108	115	118	121	125	131	135	138	141	148	151	157	164	
				22.0	26.0	30.0	32.0	33.0	35.0	36.0	37.0	38.0	40.0	41.0	42.0	43.0	45.0	46.0	48.0	50.0	
164 ft 50.0m	8,820 lbs – 62 ft 4 000 kg – 18.9m		lbs kg	7,209 3 270	5,776 2 620	4,740 2 150	4,343 1 970	4,145 1 880	3,814 1 730	3,660 1 660	3,527 1 600	3,395 1 540	3,131 1 420	3,020 1 370	2,910 1 320	2,800 1 270	2,760 1 250	2,760 1 250	2,760 1 250	2,760 1 250	
148 ft 45.0m	8,820 lbs – 72 ft 4 000 kg – 21.8m		lbs kg	8,708 3 950	7,010 3 180	5,798 2 630	5,335 2 420	5,115 2 320	4,718 2 140	4,542 2 060	4,365 1 980	4,211 1 910	3,924 1 780	3,860 1 750	3,860 1 750	3,860 1 750					
131 ft 40.0m	8,820 lbs – 84 ft 4 000 kg – 25.6m		lbs kg	8,820 4 000	8,664 3 930	7,231 3 280	6,658 3 020	6,393 2 900	5,930 2 690	5,710 2 590	5,511 2 500	5,313 2 410	5,290 2 400								
115 ft 35.0m	8,820 lbs – 94 ft 4 000 kg – 28.6m		lbs kg	8,820 4 000	8,820 4 000	8,311 3 770	7,650 3 470	7,363 3 340	7,055 3 200												

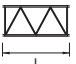
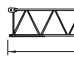
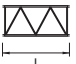
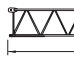
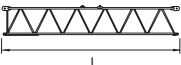
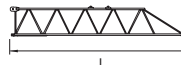
NOTE! 2/4-part operation available only with jib at 0°.

4-Part Line

Hook Radius	Maximum Capacity – Radius		ft m	72	85	98	105	108	115	118	121	125	131	135	138	141	148	151	157	164	
				22.0	26.0	30.0	32.0	33.0	35.0	36.0	37.0	38.0	40.0	41.0	42.0	43.0	45.0	46.0	48.0	50.0	
164 ft 50.0m	17,635 lbs – 37 ft 8 000 kg – 11.2m		lbs kg	7,209 3 270	5,776 2 620	5,512 2 500	5,225 2 370	5,004 2 270	4,630 2 100	4,453 2 020	4,277 1 940	4,123 1 870	3,836 1 740	3,704 1 680	3,571 1 620	3,461 1 570	3,241 1 470	3,131 1 420	2,866 1 300	2,760 1 250	
148 ft 45.0m	17,635 lbs – 42 ft 8 000 kg – 12.8m		lbs kg	8,708 3 950	7,716 3 500	6,658 3 020	6,129 2 780	5,886 2 670	5,445 2 470	5,247 2 380	5,049 2 290	4,872 2 210	4,542 2 060	4,387 1 990	4,255 1 930	4,123 1 870	3,860 1 750				
131 ft 40.0m	17,635 lbs – 49 ft 8 000 kg – 14.8m		lbs kg	10,714 4 860	9,193 4 170	7,672 3 480	7,077 3 210	6,790 3 080	6,305 2 860	6,085 2 760	5,864 2 660	5,666 2 570	5,290 2 400								
115 ft 35.0m	17,635 lbs – 54 ft 8 000 kg – 16.4m		lbs kg	12,588 5 710	10,229 4 640	8,576 3 890	7,893 3 580	7,606 3 450	7,055 3 200												

NOTE! 4-part operation available only with jib at 0°.

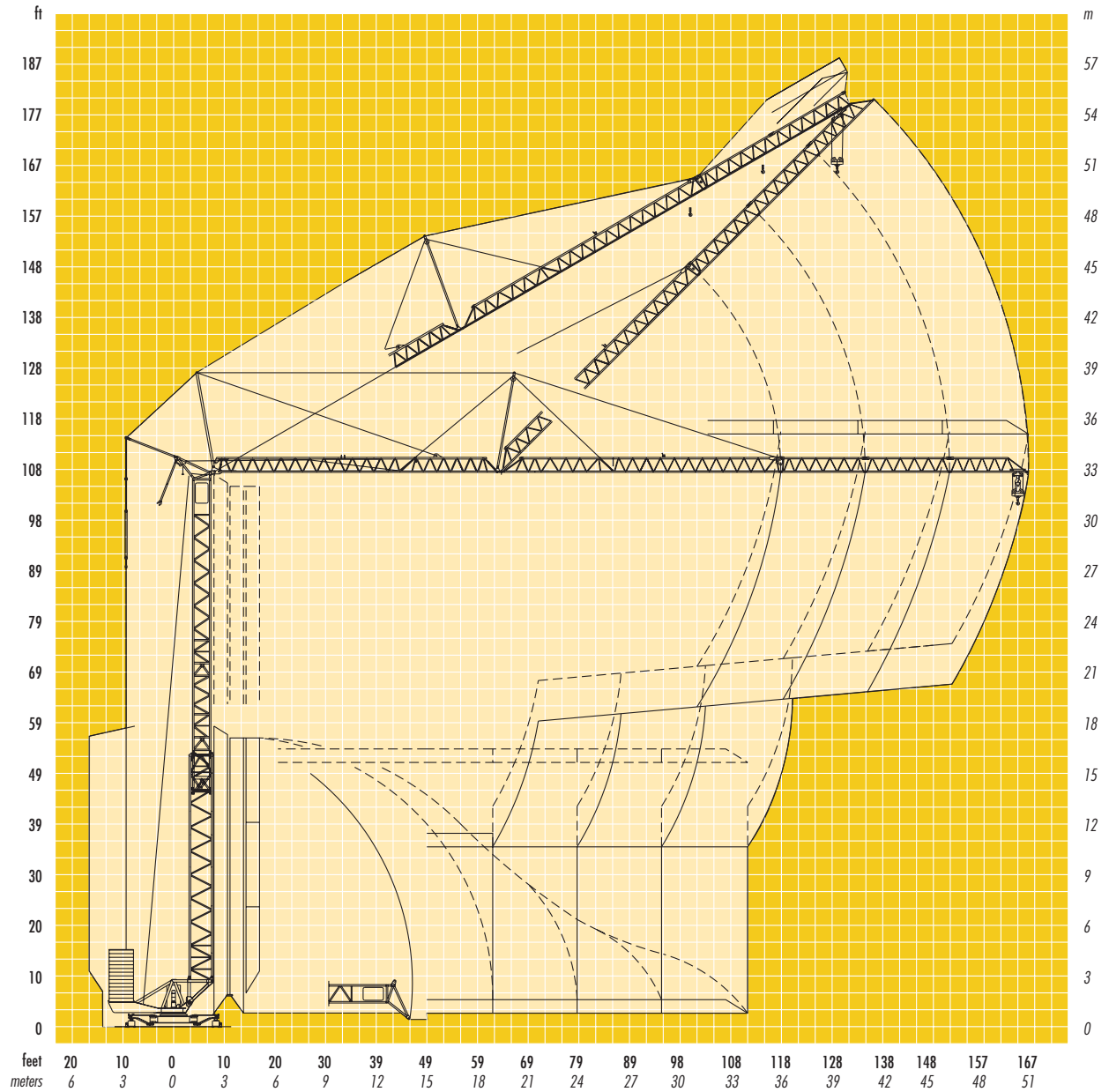
Component Information

Description		Dimensions L x W x H	Weight	Description		Dimensions L x W x H	Weight
Tower Section		8'-3" x 3'-8" x 3'-8" 2.52m x 1.11m x 1.11m	1,720 lbs 780 kg	Jib Section ②		16'-11" x 3'-4" x 3'-0" 5.16m x 1.02m x 0.92m	485 lbs 220 kg
Jib Section ①		17'-2" x 3'-4" x 3'-3" 5.24m x 1.02m x 0.99m	770 lbs 350 kg	Jib Section ③		15'-6" x 3'-4" x 2'-11" 4.73m x 1.02m x 0.89m	375 lbs 170 kg

NOTE! Weights and dimensions are approximate. Scale components before lifting.

SPECIFICATIONS

LIEBHERR Tower crane model 120 K



Erection Sequence

SPECIFICATIONS

LIEBHERR Tower crane model 120 K

Hoist Speed and Capacity

Hoist Unit	2-Part Line				
	Step	Capacity	Line Speed	Capacity	Line Speed
32 hp (24 kW) AC hoist unit • 3-step motor with pole-changing speed control	1	up to 8,820 lbs	@ 21 fpm	up to 4 000 kg	@ 6.5 m/min
	2	up to 8,820 lbs	@ 98 fpm	up to 4 000 kg	@ 30 m/min
	3	up to 4,410 lbs	@ 196 fpm	up to 2 000 kg	@ 60 m/min
	4-Part Line				
	1	up to 17,640 lbs	@ 11 fpm	up to 8 000 kg	@ 3.25 m/min
	2	up to 17,640 lbs	@ 49 fpm	up to 8 000 kg	@ 15 m/min
	3	up to 8,820 lbs	@ 98 fpm	up to 4 000 kg	@ 30 m/min

NOTE! Capacities and line speeds indicated in the charts above will vary depending on the amount of hoist rope installed. This crane model may be equipped with a hoist unit other than those specified in the data above. To verify, check the serial number of the crane and refer to the Liebherr 120 K Operation Manual for additional information.

Motor Information

Drive Unit	Horsepower	Kilowatts	Speed	
Trolley	6.7 hp	5.0 kW	33/108/220 fpm	10/33/67 m/min
Swing	8.4 hp	6.3 kW	0.8 rpm	
Luffing	8.0 hp	6.0 kW	0° - 45° in 2 min	
Travelling	2 x 2.7 hp	2 x 2.0 kW	82 fpm	25 m/min

Power Requirements

480 V — 3-phase — 60 Hz — 100 Amperes

Subject to changes without prior notice. For additional information, contact Morrow Equipment.



Morrow Equipment
C O M P A N Y, L. L. C.

3218 Pringle Road SE • P O Box 3306 • Salem, Oregon 97302-0306 USA
Tel. 503.585.5721 • Fax. 503.363.1172 • www.morrowequipment.com

The American home of
LIEBHERR

Atlanta, GA • Charlotte, NC • Chicago, IL • Denver, CO • Honolulu, HI • Houston, TX • Los Angeles, CA • Las Vegas, NV
Millwood, NY • St. Louis, MO • San Francisco, CA • Dallas, TX • Seattle, WA • Miami, FL • Tampa, FL • Washington, DC
Sydney, Australia • Wellington, New Zealand • Vancouver, BC, Canada • Toronto, ON, Canada • México DF, México